

YC6J125Z-T20(J8004)柴油机

# 零件图册

**Parts Catalogue of YC6J125Z-T20(J8004) Diesel Engine**

广西玉柴机器股份有限公司

Guangxi Yuchai Machinery Co., Ltd.

2010年2月

February 2010

# 前 言

## Foreword

感谢您选用广西玉柴机器股份有限公司的产品，并感谢您阅读《YC6J125Z-T20(J8004)柴油机零件图册》！

Thanks for using Yuchai engine and reading the “Parts Catalogue of YC6J125Z-T20(J8004) Diesel Engine”!

玉柴的服务宗旨是：“倾我所有、尽我所能、竭诚用户、诚信天下”，为了更好地履行玉柴的服务宗旨，我们编印了《YC6J125Z-T20(J8004)柴油机零件图册》，希望本图册可以让用户更好地了解玉柴产品的结构与配置，方便用户使用、维修和购置零配件。

With the aim to fulfill our company service tenet, i.e. “striving all out to serve the customers, spending full sincerity to confidence the world”, we compiled and printed this “Parts Catalogue of YC6J125Z-T20(J8004) Diesel Engine”. We hope this “Parts Catalogue of YC6J125Z-T20(J8004) Diesel Engine” will help you to understand the structure and configuration of Yuchai’s YC6J125Z-T20(J8004) diesel engines, so to operate and maintain them easily.

本零件图册是根据 2010 年 2 月的相关生产图样、资料编制而成的。图册中列出了 YC6J125Z-T20(J8004)柴油机的全部零部件目录。

This “Parts Catalogue of YC6J125Z-T20(J8004) Diesel Engine” is compiled by basing on the production samples and technical documents in February 2010, and covers the engine model of YC6J125Z-T20(J8004) diesel engine.

随着产品的不断改进提高和用户不断提出新的要求，《YC6J125Z-T20(J8004)柴油机零件图册》中的有关内容将会有不同程度的变更，玉柴保留在不预先通知的情况下进行修改的权利，具体配置情况应以当时产品技术文件为依据。

As production improvements and consumer’s requirements are constantly brought up, the content of this “Parts Catalogue of YC6J125Z-T20(J8004) Diesel Engine” must be changed at a certain extent, which Yuchai reserves the right to modify without formal notification beforehand. The engine’s idiographic configuration is according to its technical documents.

本零件图册编写不足之处在所难免，敬请多多指教，使之渐臻完善。谢谢！

Deficiencies may appear in this “Part Catalogue of YC6J125Z-T20(J8004) Diesel Engine”, and your comments and suggestions are appreciated honestly!

广西玉柴机器股份有限公司  
Guangxi Yuchai Machinery Co. Ltd.

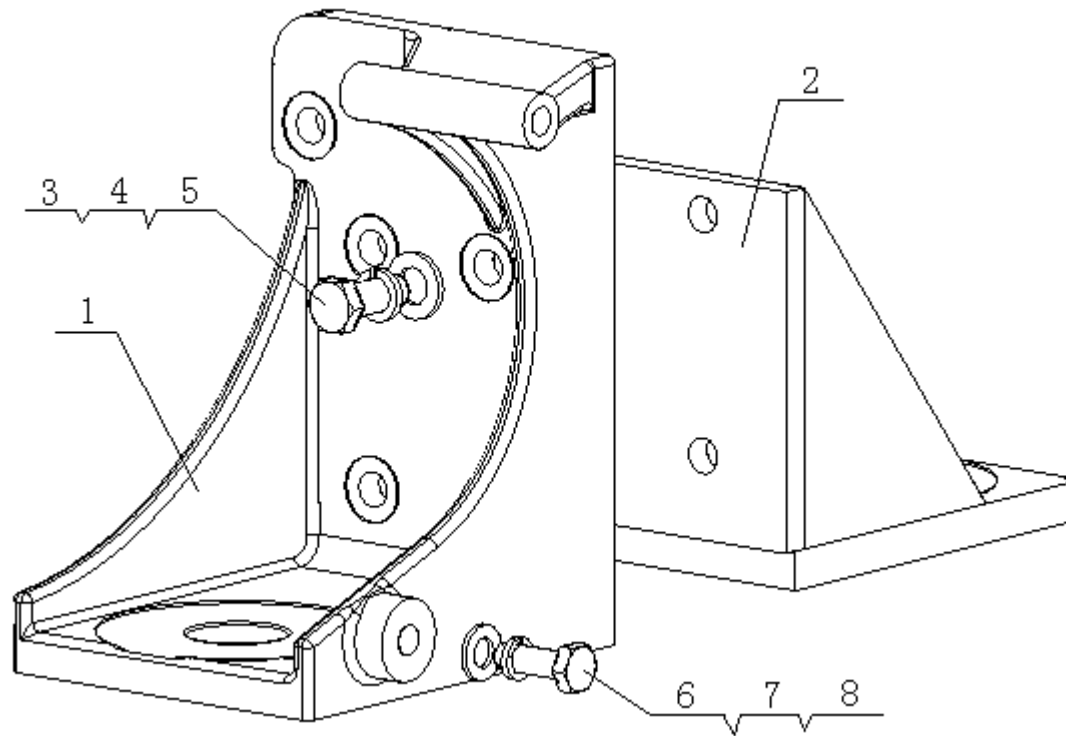
## 目 录 CONTENT

序号 No.	图 号 Part No.	名 称	Part Name	页数 Page.	备 注 Remarks
1	J8004-1001000/01	发动机悬置总成	Engine Suspension Assembly		
2	J8004-1002000/01	气缸体总成	Cylinder Block Assembly		
3	J8000-1002030/07	正时齿轮室部件	Gear Housing Parts		
4	J4000-1003000/11	气缸盖总成	Cylinder Head Assembly		
5	J3200-1004000/01	活塞连杆总成	Piston & Connecting Rod Assembly		
6	J8004-1005000/01	曲轴减振器总成	Crankshaft Vibration Damper Assembly		
7	630-1006000A/02	凸轮轴总成	Camshaft Assembly		
8	J3200-1007000/06	气门挺杆总成	Valve Tappet Assembly		
9	J8000-1008100/05	进气管部件	Intake Pipe Parts		
10	J8000-1008200/03	排气管部件	Exhaust Pipe Parts		
11	340-1009000/05	油底壳总成	Oil Sump Assembly		
12	630-1028000/01	油标尺总成	Oil Dipstick Assembly		
13	340-1010000/05	机油收集器总成	Oil Collector Assembly		
14	B3000-1011000/05	机油泵总成	Oil Pump		
15	J8001-1012000/02	机油滤清器总成	Oil Filter Assembly		
16	J8700-1013000/08	机油冷却器总成	Oil Radiator Assembly		
17	6105Q-1014000A/03	呼吸器部件	Breather Parts		
18	B7648-1130000/03	燃油喷射泵附件总成	Fuel Injection Pump Accessory Assembly		
19	J80G0-1104000/03	供给系管路总成	Diesel Fuel Tube Assembly		
20	B7640-1105000/01	柴油滤清器总成	Fuel Filter Assembly		
21	J8000-1109000/06	空气滤清器总成	Air Cleaner Assembly		
22	J8004-1111000/01	喷油泵总成	Injection Pump Assembly		
23	B7648-1115000/03	断油机构总成	Fuel Cut-off System Assembly		
24	J3400-1112000/03	喷油器总成	Injector Assembly		
25	J7M00-1118000/01	增压器总成	Turbocharger Assembly		
26	J8000-1201000/09	消声器总成	Muffler Assembly		
27	J8000-1306000/05	调温器总成	Thermostat Assembly		
28	631-1305000/06	放水开关总成	Water Drain Cock Assembly		
29	J8004-1307000/03	水泵总成	Water Pump Assembly		
30	396-1308000/02	风扇总成	Fan Assembly		

31	B7648-1600000/04	动力输出总成	Power Output Assembly		
32	J8004-1303000/04	散热器水管及软管总成	Radiator Water Pipe & Hose Assembly		
33	J8000-3509000/10	气制动空气压缩机总成	Pneumatic Air Compressor Assembly		
34	J8004-3701000/02	发电机总成	Alternator Assembly		
35	B7641-3708000/02	起动机总成	Starter Assembly		
36	B7648-3800000/01	仪表、感应器总成	Instrument & Sensor Assembly		
37	A8C02-3904000/01	铭牌	Nameplate		

图 Drawing

1. J8004-1001000/01 发动机悬置总成 Engine Suspension Assembly



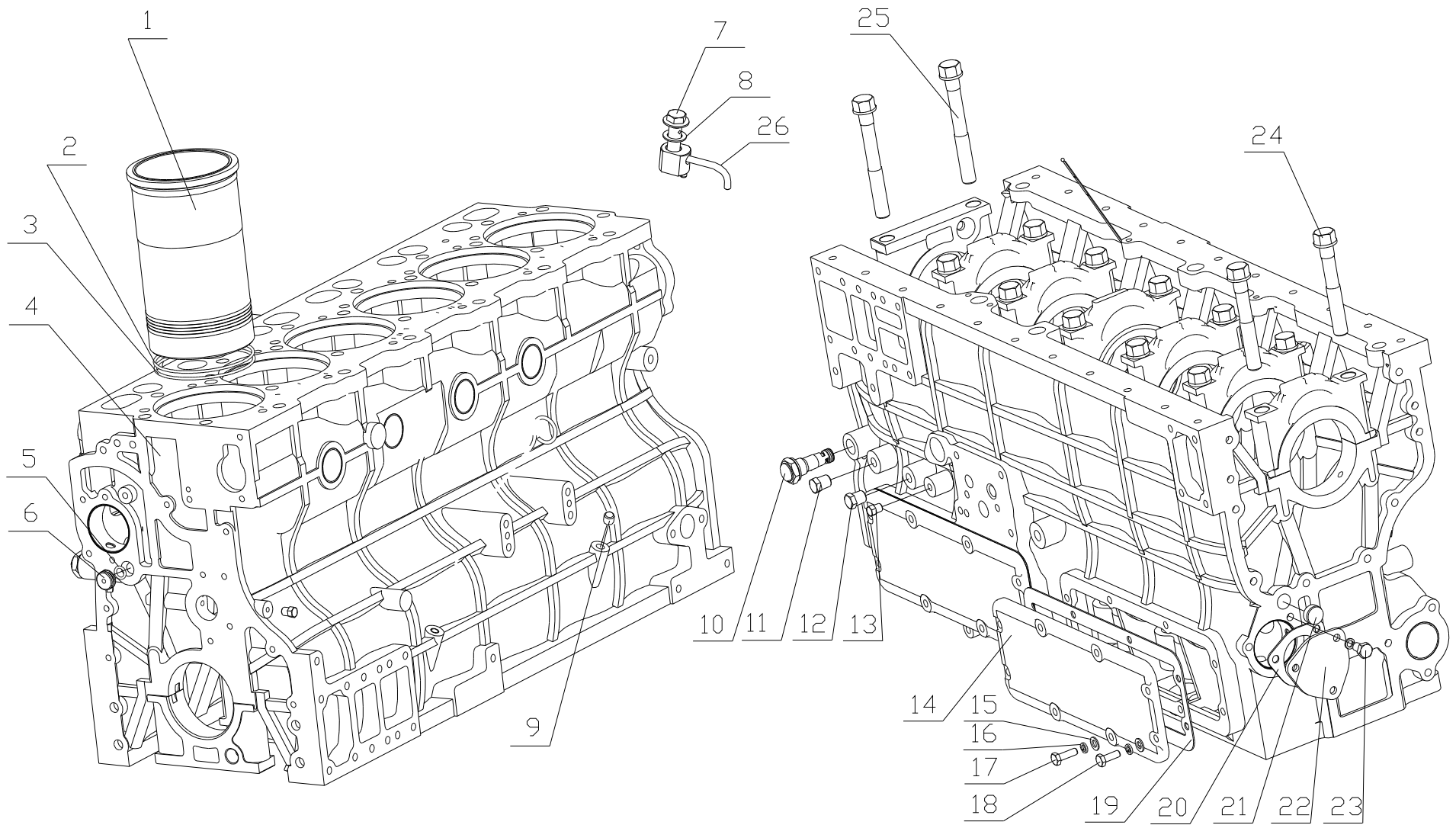
## 1. J8004-1001000/01 发动机悬置总成 Engine Suspension Assembly

序号 Item	图号 Part No.	名称	Part Name	数量 Qty.	备注 Remark
1	J8004-1001001	前左支脚	Front left foot	1	
2	B7648-1001140	前右支架组件	Front right bracket subassembly	1	
3	Q150B1230	螺栓 M12X30	Bolt	8	
4	Q40312	垫圈 12	Washer 12	8	
5	Q40112	垫圈 12	Washer 12	8	
6	Q150B1030	螺栓 M10X30	Bolt	1	
7	Q40310	垫圈 10	Washer 10	1	
8	Q40110	垫圈 10	Washer 10	1	

EWP=Easy wear part (易损件)

图 Drawing

2. J8004-1002000/01 气缸体总成 Cylinder Block Assembly



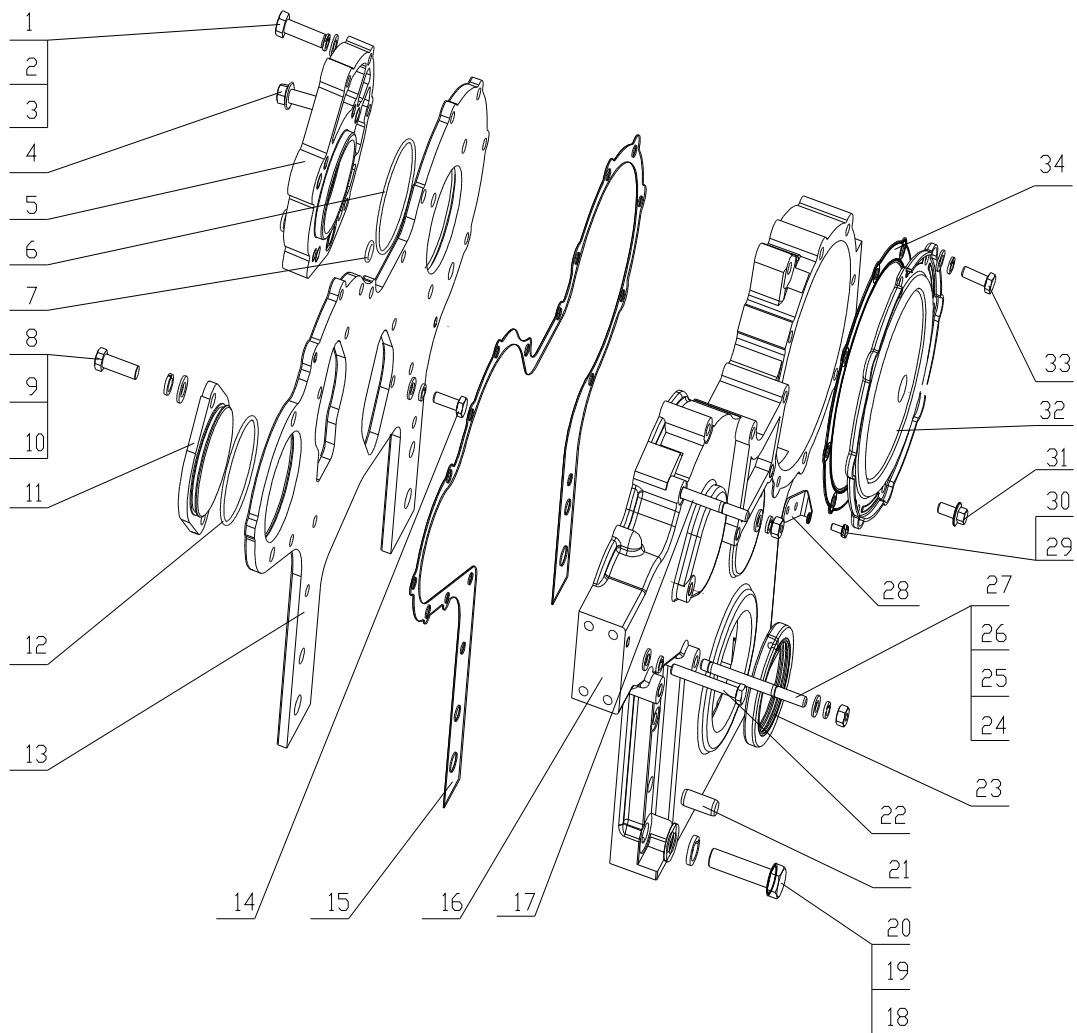
## 2. J8004-1002000/01 气缸体总成 Cylinder Block Assembly

序号 No.	图号 Part No.	名 称	Part Name	数量 Qty.	备注 Remark
1	J3330-1002064A	气缸套	Cylinder liner	6	易损件 EWP
2	A3000-1002063	气缸套封水圈	Cylinder liner water seal	6	易损件 EWP
3	A3000-1002063B	气缸套封水圈	Cylinder liner water seal	6	易损件 EWP
4	430-1002015B	气缸体	Cylinder block	1	
	430-1002015B*	气缸体组件	Cylinder block subassembly	1	
5	YC208-B01600F	O 形圈 2.65×16	O-ring	1	
6	6105Q-1002067	主油道密封塞	Main oil passage sealing plug	1	
7	G0100-1002162A	过油螺栓	Hollow bolt for oil	6	
8	430-1002163	垫圈	Washer	6	
9	6105Q-1002022	铝堵 φ10×10	Aluminum blockage	1	
10	430-1002150	调压阀总成	Pressure regulator assembly	1	
11	Q618B02	螺塞 NPT1/4	Screw plug	2	
12	Q618B01	螺塞 NPT1/8	Screw plug	2	
13	Q618B03	螺塞 NPT3/8	Screw plug	1	
14	475-1002065	挺杆室盖	Tappet housing cover	2	
15	Q40108	垫圈 8	Washer 8	16	
16	Q40308	垫圈 8	Washer 8	19	
17	Q150B0825	螺栓 M8X25	Bolt M8X25	8	
18	Q150B0822	螺栓 M8X22	Bolt M8X22	8	
19	J3200-1002066	挺杆室盖垫片	Tappet housing gasket	2	
20	J3200-1002062	凸轮轴端盖垫片	Crankshaft end cover washer	1	易损件 EWP
21	6105Q-1002069	后主油道堵塞	Rear main oil galley plug	1	
22	630-1002061	凸轮轴端盖	Camshaft end cover	1	
23	Q150B0816	螺栓 M8×16	Bolt	3	
24	330-1002021A	主轴承螺栓	Main bearing bolt	12	
25	330-1002018A	前主轴承盖螺栓	Front main bearing cover bolt	2	
26	430-1002170F	喷嘴焊接件	Nozzle welded part	6	

EWP=Easy wear part (易损件)



### 3. J8000-1002030/07 齿轮室部件 Gear Housing Parts



### 3. J8000-1002030/07 齿轮室部件 Gear Housing Parts

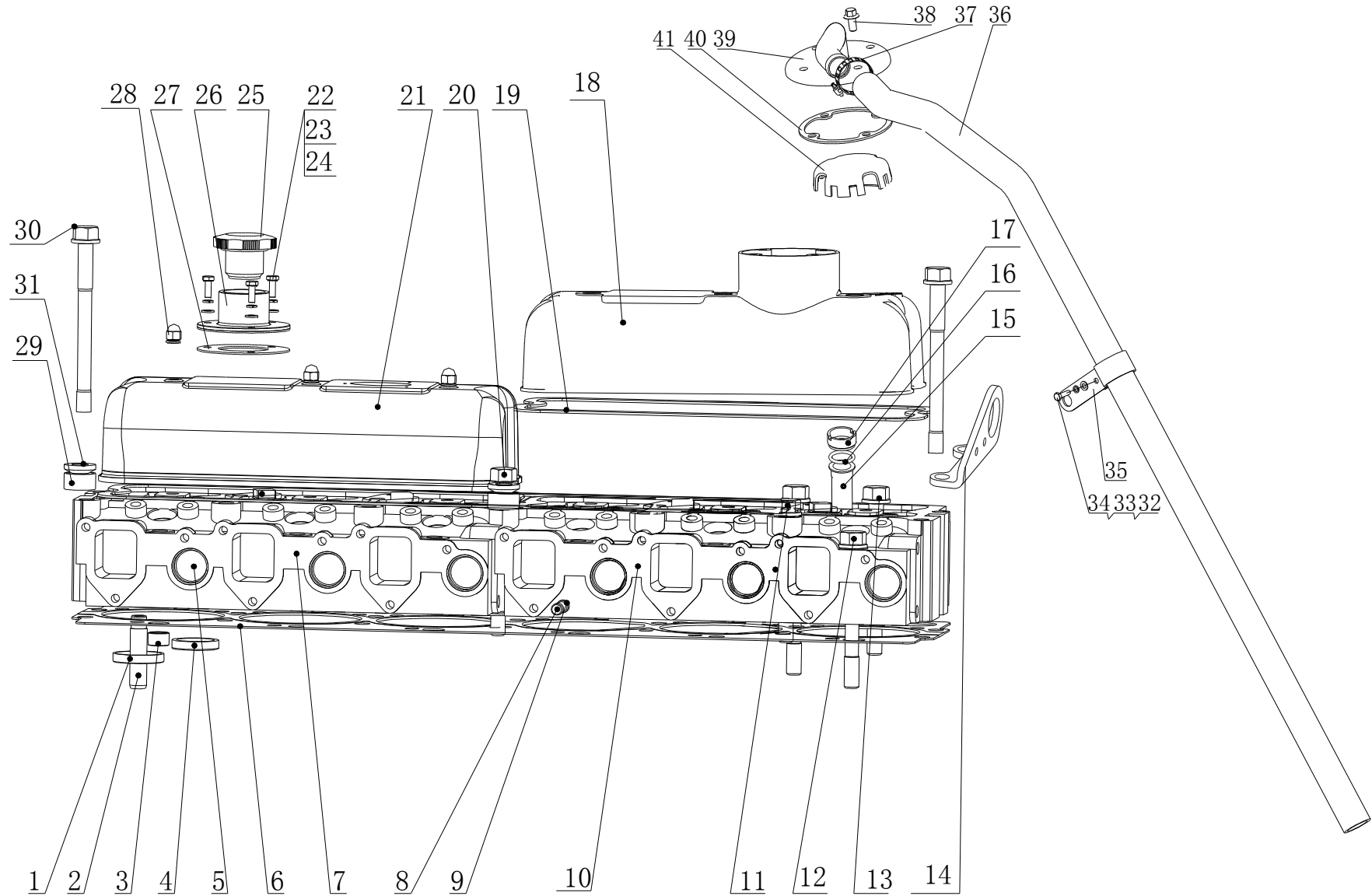
序号 No.	图号 Part No.	名称	Description	数量 Qty.	备注 Remark
1	Q40112	垫圈 12	Lock Washer 12	3	
2	Q40312	垫圈 12	Lock Washer 12	3	
3	Q/YC1821230	螺栓 M12X30	Bolt M12X30	3	
4	Q1841025TF2	螺栓 M10X25	Bolt M10X25	4	
5	330-1002037C	空压机支承板	Air compressor supporting board	1	
6	YC208-B08000F	O 形圈2.65X80	O-ring	1	
7	YC208-B01600F	O 形圈2.65×16	O-ring	2	
8	Q/YC1821030	螺栓 M10X30	Bolt	2	
9	Q40110	垫圈10	Washer	2	
10	Q40310	垫圈10	Washer	2	
..11	330-1002042A	动力转向泵盖板	Steering pump cover plate	1	
12	YC208-P07500F	O 形圈3X75	O-ring	1	
13	330-1002033C	正时齿轮室前盖板	Timing gear housing front cover plate	1	
14	Q150B0822	螺栓 M8X22	Bolt	6	
15	330-1002034A	正时齿轮室盖垫片	Timing gear housing cover gasket	1	
16	3430-1002031	正时齿轮室	Timing gear housing	1	
17	Q1200860	螺柱 M8X60	Stud	1	
18	Q150B1460	螺栓 M14X60	Bolt	2	
19	Q40314	垫圈 14	Washer 14	2	
20	Q40114	垫圈14	Washer 14	2	
21	YC24-B1230	圆柱销12X30	Cylindrical pin	2	
22	Q150B0860	螺栓 M8X60	Bolt M8X60	1	
23	YC209-C065090PR	油封65X90	Oil seal	1	
24	Q1200885	螺柱 M8X85	Stud	3	
25	Q340B08	螺母 M8	Nut M8	3	
26	Q40308	垫圈 8	Washer 8	22	
27	Q40108	垫圈 8	Washer 8	25	
28	6105Q-1002039	上止点指针	TDC pointer	1	
29	Q150B0510	螺栓 M5X10	Bolt	2	
30	Q40305	垫圈 5	Washer 5	2	

31	Q150B0816	螺栓 M8X16	Bolt M8X16	2	
32	630-1002035A	喷油泵齿轮盖	Fuel injection pump gear cover	1	
33	Q150B0822	螺栓 M8X22	Bolt	6	
34	J3200-1002036B	喷油泵齿轮盖垫片	Fuel injection pump gear cover gasket	1	

EWP=Easy wear part (易损件)

图 Drawing

4、J4000-1003000/11 气缸盖及气缸盖罩总成 Cylinder Head & Cylinder Head Cover Assembly



#### 4、J4000-1003000/11 气缸盖及气缸盖罩总成 Cylinder Head & Cylinder Head Cover Assembly

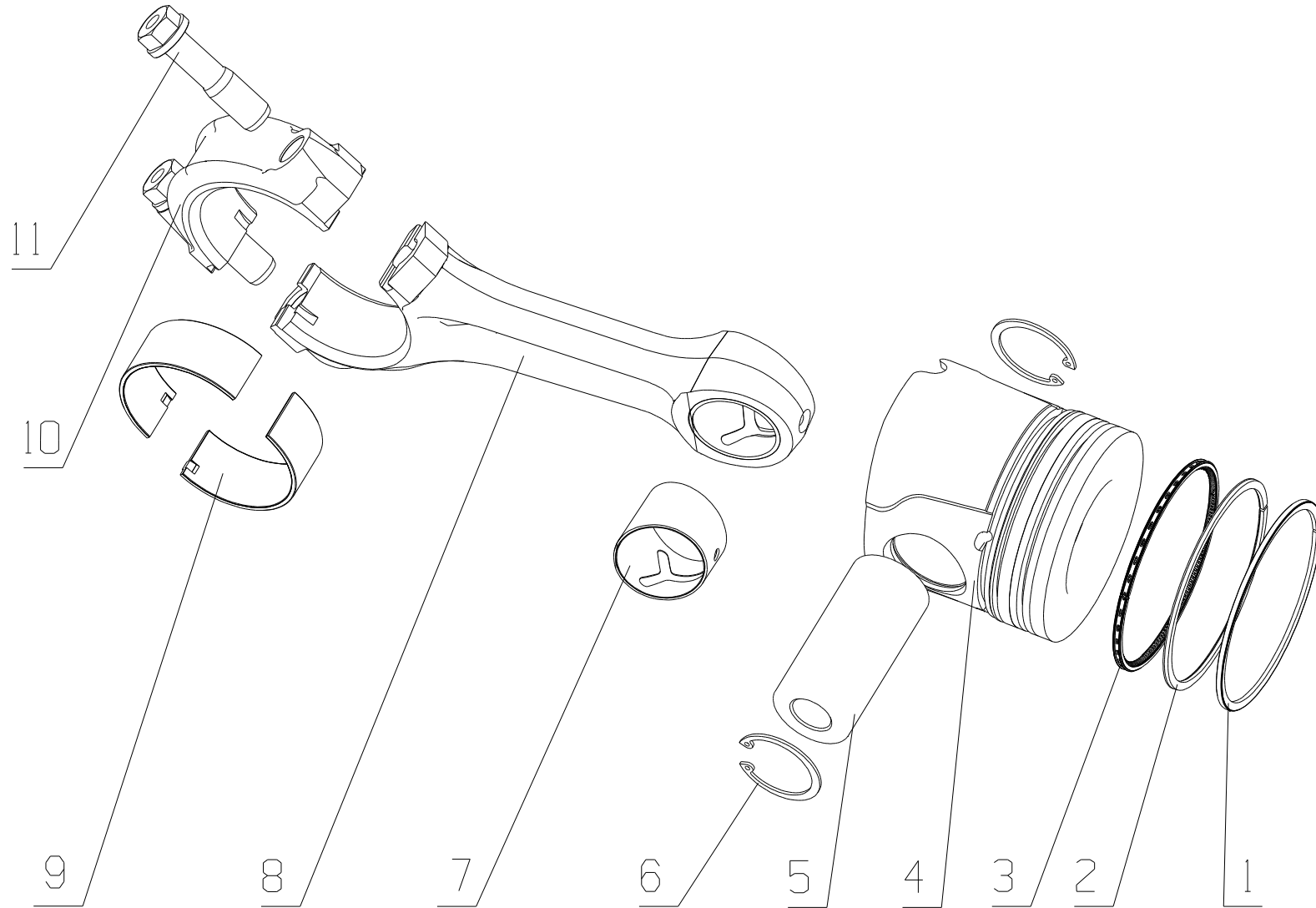
序号 No.	图 号 Part No.	名 称	Part Name	数量 Qty.	备 注 Remarks
1	J4200-1003173	进气门座圈	Intake valve seat ring	6	
2	430-1007018	气门导管	Valve guide pipe	12	
3	6105QA-1003088	气缸盖定位销套	Locating pin sleeve	4	
4	J4200-1003174	排气门座圈	Exhaust valve seat ring	6	
5	630-1003081	水套堵塞	Water jacket plug	12	
6	B3000-1003001A	气缸盖垫片	Cylinder head gasket	1	易损件 (EWP)
7	B3200-1003015A	前气缸盖	Front cylinder head	1	
	J4200-1003015A*	前气缸盖组件	Front cylinder head subassembly	1	
8	6105QA-1003086	铝堵 (一)	Aluminum plug (I)	6	
9	6105QA-1003087	铝堵 (二)	Aluminum plug (II)	6	
10	B3200-1003016A	后气缸盖	Rear cylinder head	1	
	J4200-1003016A*	后气缸盖组件	Rear cylinder head subassembly	1	
11	330-1003012B	缸盖螺栓	Cylinder head bolt	8	
12	330-1003018B	缸盖短螺栓 (II)	Cylinder head short bolt (II)	6	
13	330-1003014B	气缸盖短螺栓	Cylinder head short bolt	6	
14	6105Q-1003085	吊耳	Lifter	2	
15	6105QA-1003019A	喷油器铜套	Injector copper sleeve	6	
16	YC208-C02360S	O 形圈 3.55X23.6	O-ring3.55X23.6	6	易损件 EWP
17	6105QA-1003001	螺套	Screw sleeve	6	
18	430-1003051	气缸盖罩 II	Cylinder head cover II	1	
19	J3200-1003022	缸盖罩垫片	Cylinder head cover gasket	2	易损件 (EWP)
20	330-1003013B	气缸盖长螺栓	Cylinder head long bolt	2	
21	430-1003021	气缸盖罩 I	Cylinder head cover I	1	
22	Q150B0616	螺栓 M6X16	Bolt M6×16	3	
23	Q40306	垫圈 6	Washer 6	3	
24	Q40106	垫圈 6	Washer 6	3	
25	150-1003040F	加机油口盖组件	Oil filler cover component	1	

26	B3000-1003042	加机油口座	Oil filler seat	1	
27	B3000-1003032	加机油口垫片	Oil filler gasket	1	易损件 (EWP)
28	430-1003070A	压紧螺母组件	Compression nut component	6	
29	6105QA-1003017F	垫圈 (二)	Washer (II)	6	
30	330-1003019B	气缸盖长螺栓 (I)	Cylinder head long bolt (I)	4	
31	6105QA-1003017D	垫圈	Washer	6	
32	Q150B0516	螺栓 M5X16	Bolt M5X16	1	
33	Q40305	垫圈 5	Washer 5	1	易损件 EWP
34	Q40105	垫圈 5	Washer 5	1	易损件 EWP
35	B3402-1003020	管夹焊接件	Pipe clamp welded part	1	
36	J41XB-1014003A	通气软管	Ventilation soft pipe	1	易损件 EWP
37	Q67638	环箍 38	Loop hoop 28	1	
38	Q1840816	螺栓 M8X16	Bolt M8X16	4	
39	B3220-1003040	上呼吸器焊接件	Upper aspirator welded parts	1	
40	A30-1003044	上呼吸器垫片	Upper aspirator gasket	1	易损件 EWP
41	A30-1003046	导流罩	Flow guiding cover	1	

EWP=Easy wear part (易损件)

图 Drawing

### 5. J3200-1004000/01 活塞连杆总成 Piston & Connecting Rod Assembly



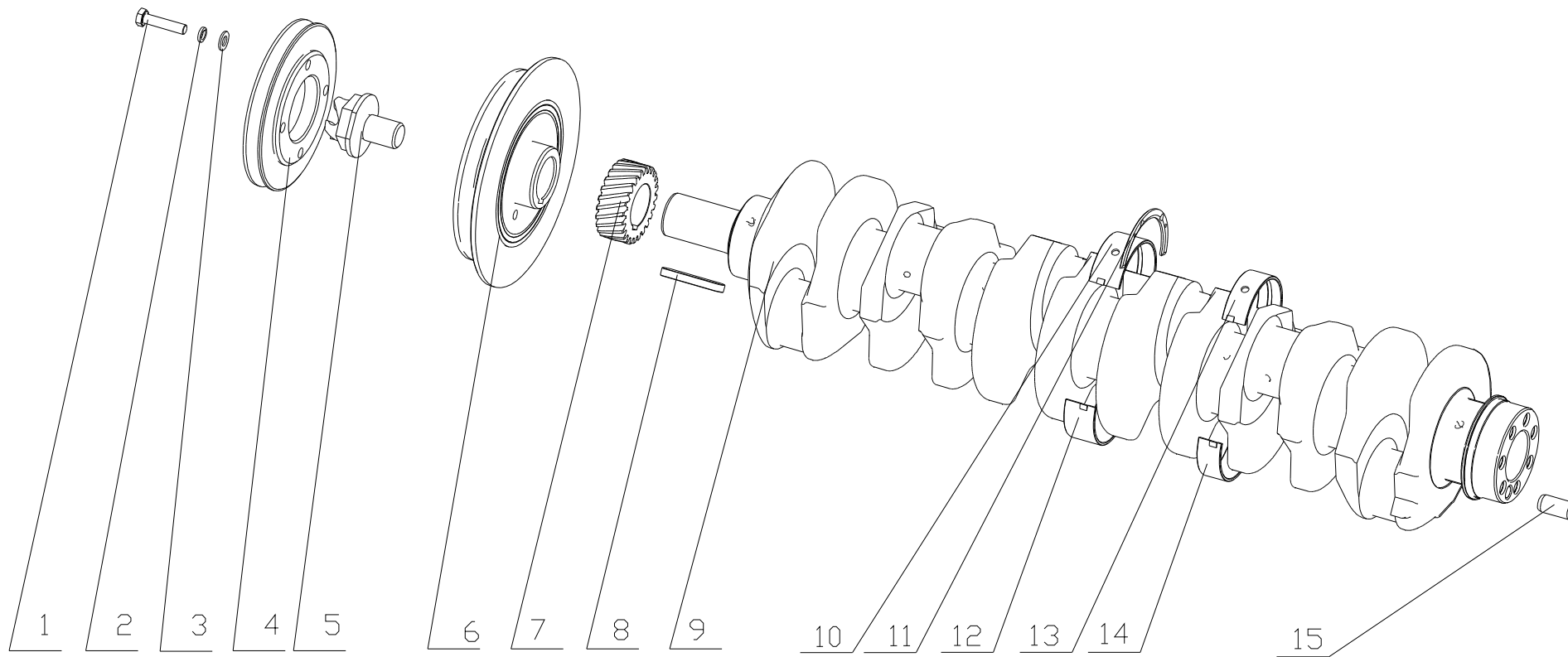
## 5. J3200-1004000/01 活塞连杆总成 Piston & Connecting Rod Assembly

序号 Item	图号 Part No.	名称	Part Name	数量 Qty.	备注 Remark
1	J3200-1004016	第一道气环	First air ring	6	
2	J3200-1004017	第二道气环	Second air ring	6	
3	J3200-1004030	油环部件	Oil ring part	6	
	J3200-1004030*	活塞环组件	Piston ring subassembly	6	包括 Including 1、2、3
4	J3200-1004015	活塞	Piston	6	
5	A30-1004019	活塞销	Piston pin	6	
6	Q43040	挡圈 40	Retaining ring 40	12	
7	A3000-1004202	连杆衬套	Connecting rod bushing	6	易损件 EWP
8	A3000-1004201	连杆体	Connecting rod shank	6	
9	430-1004022C	连杆轴瓦	Connecting rod bearing shell	12	易损件 EWP
10	A3000-1004203	连杆盖	Connecting rod cap	6	
11	6105Q-1004054	连杆螺栓	Connecting rod bolt	12	
	430-1004022C-H	连杆轴瓦(红色)	Connecting rod bearing shell set(red)	12	易损件 EWP
	430-1004022C-L	连杆轴瓦(蓝色)	Connecting rod bearing shell set(blue)	12	易损件 EWP

EWP=Easy wear part (易损件)



### 6. J8004-1005000/01 曲轴减振器总成 Crankshaft Vibration Damper Assembly



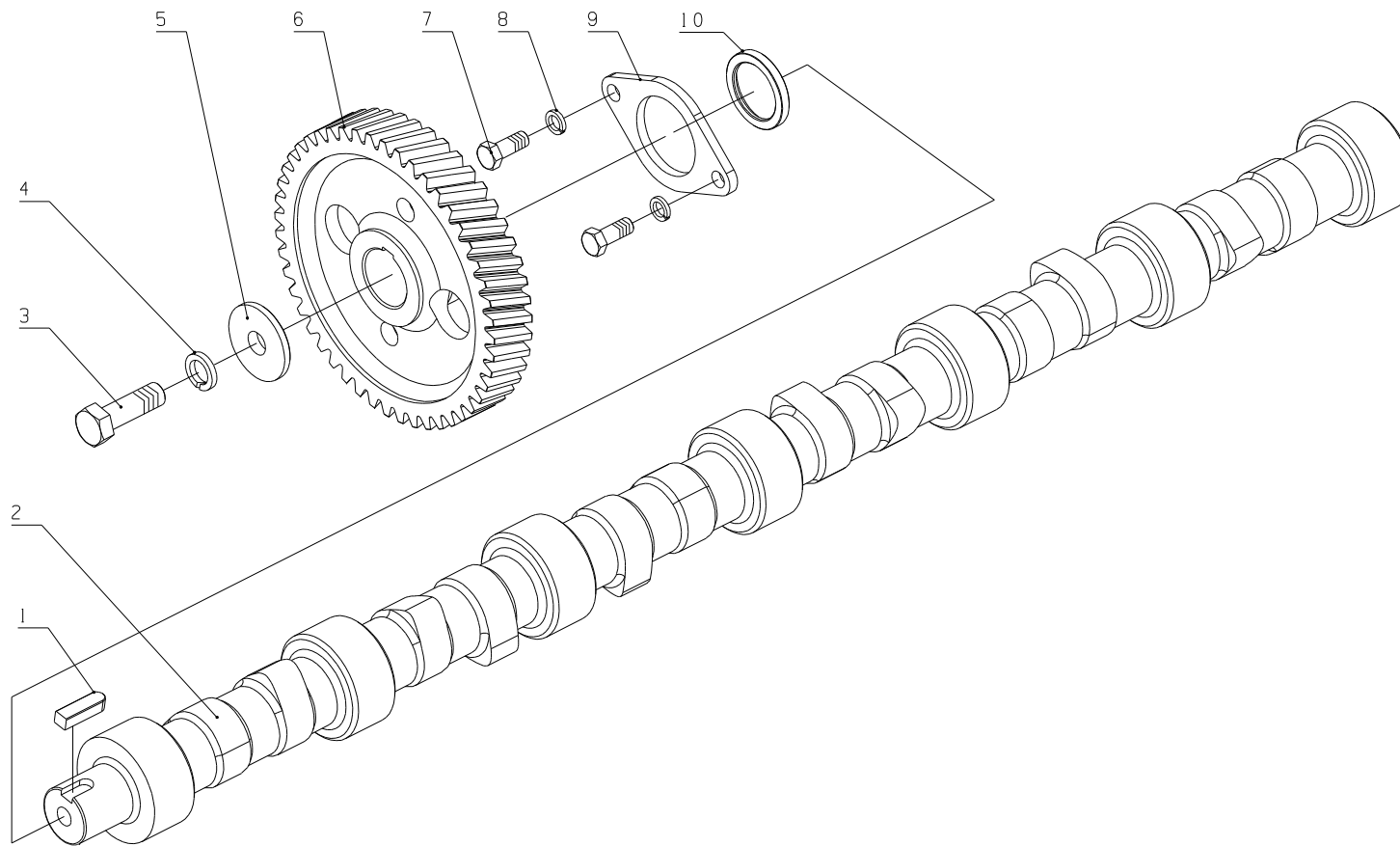
## 6. J8004-1005000/01 曲轴减振器总成 Crankshaft Vibration Damper Assembly

序号 No.	图号 Part No.	名 称	Description	数量 Qty.	备注 Remark
1	Q150B1060TF2	螺栓 M10X60	Bolt M10X60	4	
2	Q40310	垫圈 10	Washer 10	4	
3	Q40110	垫圈 10	Washer 10	4	
4	640-1005031A	曲轴-冷却器皮带轮	Crankshaft-cooler belt pulley	1	
5	6105QA-1005052	起动爪	Starting dog	1	
6	J8000-1005030A	皮带轮减振器组件	Belt pulley vibration damper subassembly	1	
7	6105Q-1005021	曲轴正时齿轮	Crankshaft timing gear	1	
8	Q5511270	键 12X70	Key	1	
9	630-1005020E	曲轴	Crankshaft	1	
10	6105Q-1005054C*-H	曲轴轴瓦组件(红)	Crankshaft bearing shell subassembly (red)	1	
	6105Q-1005054C*-L	曲轴轴瓦组件(蓝)	Crankshaft bearing shell subassembly (blue)	1	
	6105Q-1005056A	上轴瓦(宽)	Upper bearing shell(wide)	1	
11	6105Q-1005058A	曲轴止推片	Crankshaft thrusting piece	4	
12	6105Q-1005057C	下轴瓦(宽)	Lower bearing shell (wide)	1	
13	6105Q-1005054A	上轴瓦(窄)	Upper bearing shell(narrow)	6	
14	6105Q-1005055C	下轴瓦(窄)	Lower bearing shell(narrow)	6	
15	YC24-B1226	圆柱销 12X26	Straight pin	1	

EWP=Easy wear part (易损件)

图 Drawing

7. 630-1006000A/02 凸轮轴总成 Camshaft Assembly

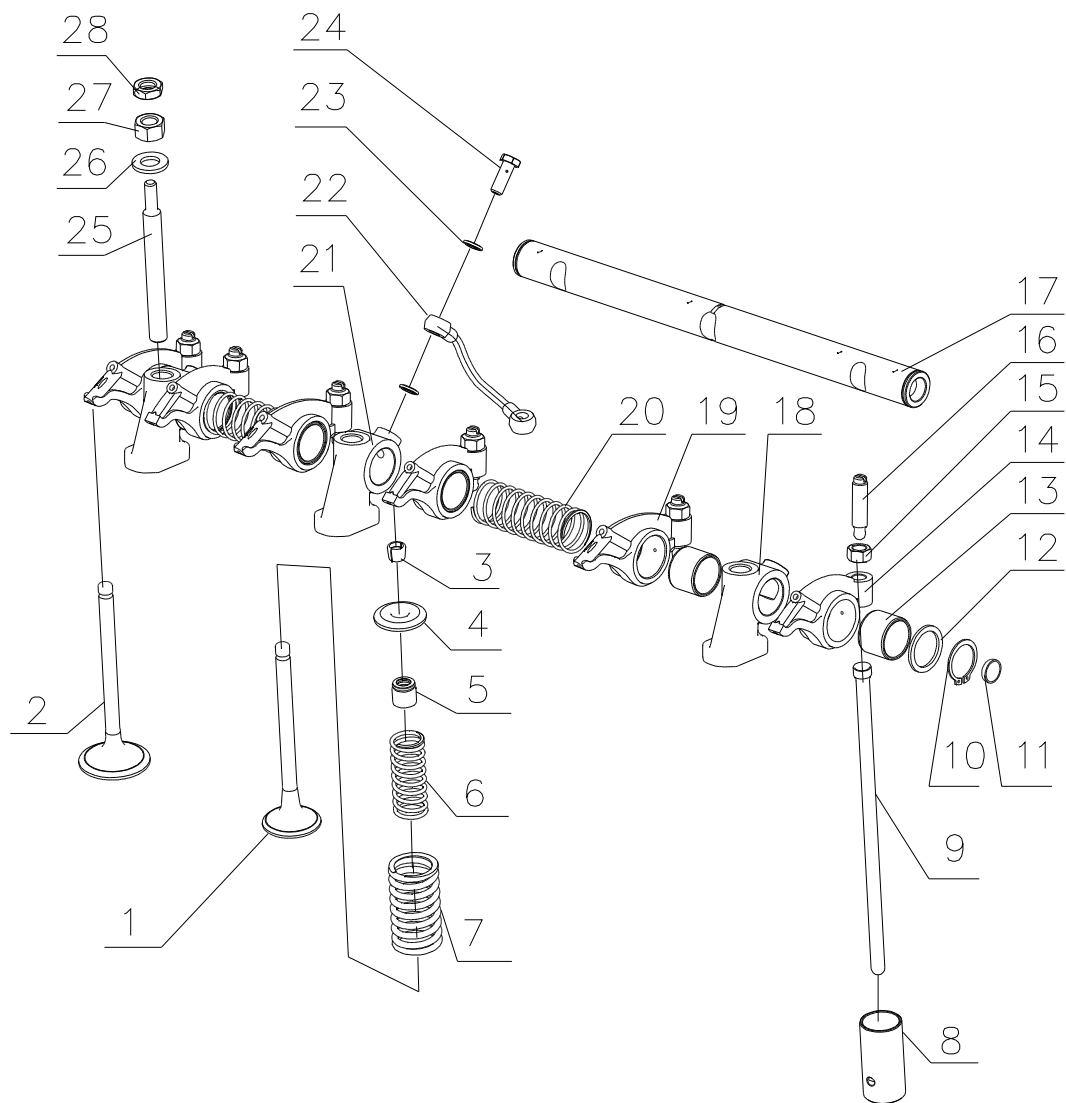


## 7. 630-1006000A/02 凸轮轴总成 Camshaft Assembly

序号 No.	图 号 Part No.	名 称	Part Name	数量 Qty.	备 注 Remarks
1	GB/T1096-C0828	键 C8×28	Key C8×28	1	
2	630-1006015A	凸轮轴	Camshaft	1	
3	Q150B1238TF2	螺栓 M12×38	Bolt M12×38	1	
4	Q40312	垫圈 12	Washer 12	1	
5	630-1006019	垫圈	Washer	1	
6	6105Q-1006021	凸轮轴正时齿轮	Camshaft timing gear	1	
7	Q/YC1820820TF2	螺栓 M8×20	Bolt M8×20	2	
8	Q40308	垫圈 8	Washer 8	2	
9	6105Q-1006016	凸轮轴止推片	Camshaft thrust plane	1	
10	6105Q-1006017	隔圈—凸轮轴正时齿轮	Spacer-camshaft timing gear	1	

EWP=Easy wear part (易损件)

### 8. J3200-1007000/06 气门挺杆总成 Valve Tappet Assembly



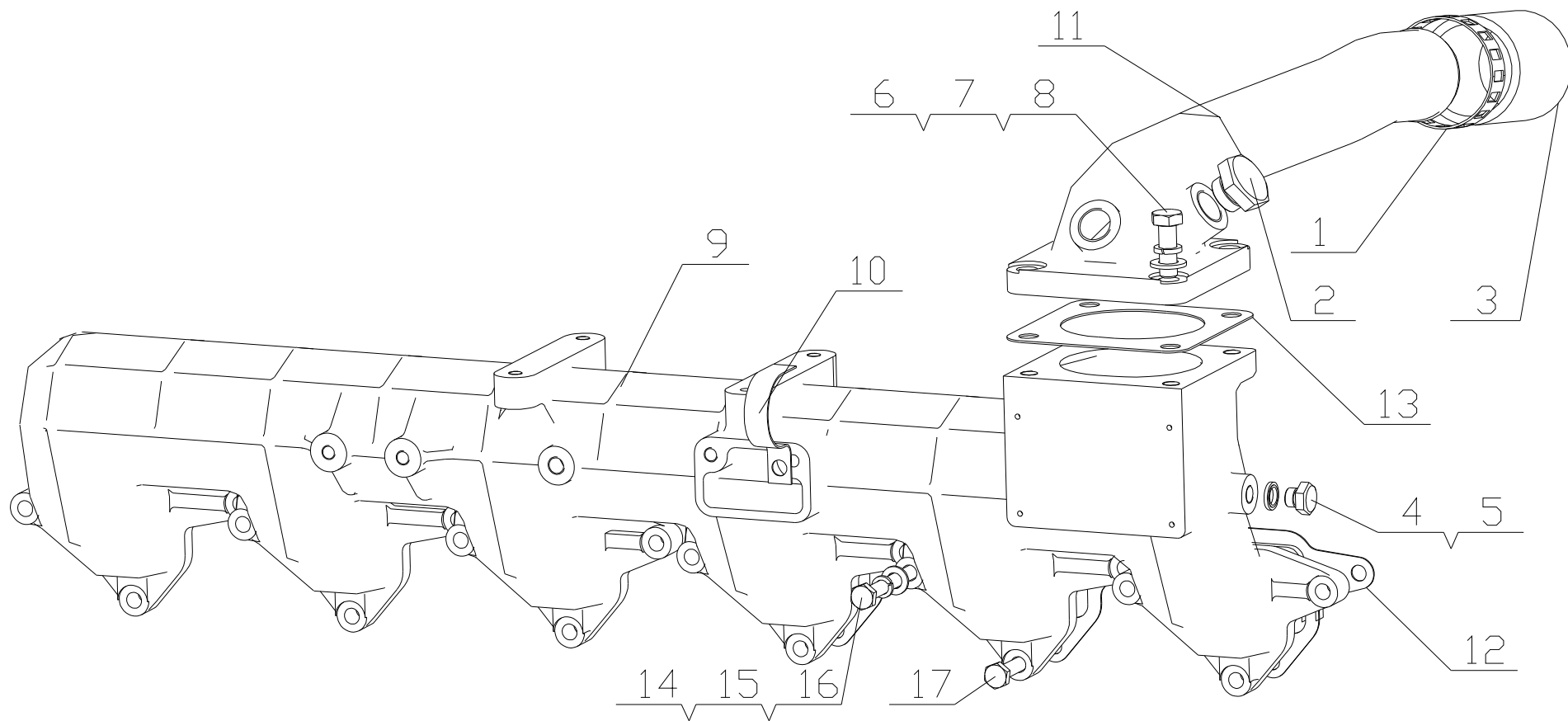
## 8. J3200-1007000/06 气门挺杆总成 Valve Tappet Assembly

序号 NO.	图 号 Part No.	名 称	Part Name	数量 Qty.	备注 Remark
1	J3000-1003103A	排气门	Exhaust valve	6	
2	D30-1003111B	进气门	Intake valve	6	
3	150-1007021E	气门锁夹	Valve stem locks	24	
4	D30-1003116	气门弹簧上座	Valve spring seat(upper)	12	
5	430-1007016A	气门杆油封	Valve stem seal	12	
6	6105Q-1007023	气门内弹簧	Valve inner spring	12	
7	6105Q-1007022	气门外弹簧	Valve outer spring	12	
8	6105Q-1007091A	挺杆	Tappet	12	
9	6105QA-1007081B	推杆	Push rod	12	
10	A3000-1007074	通油管焊接件	Oil pipe weldments	2	
11	Q/YC149-8	复合式密封垫圈 8	Compound seal washer8	8	
12	6105Q-1007073	接头螺栓	Joint bolt	4	
13	Q350B12	螺母 M12	Nut M12	6	
14	Q340B12	螺母 M12	Nut M12	6	
15	A30-1007092	垫圈	Washer	6	
16	6105QA-1007035A	摇臂轴座固定螺柱	Fixing stud, rocker-arm shaft seat	6	
17	J3100-1007100A	摇臂轴部件	Rocker arm shaft part	2	

EWP=Easy wear part (易损件)

图 Drawing

9. J8000-1008100/05 进气管部件 Intake Pipe parts



## 9. J8000-1008100/05 进气管部件 Intake Pipe parts

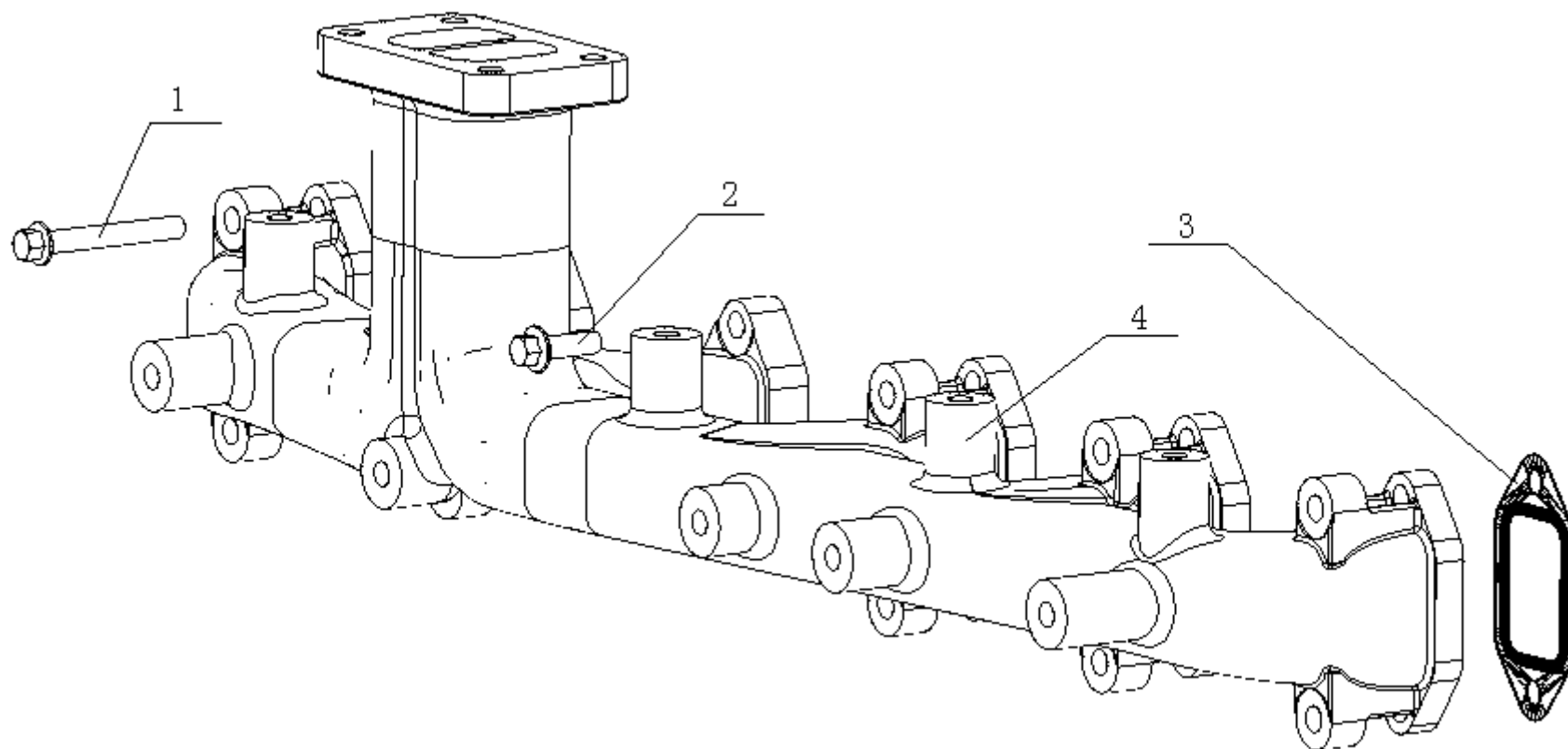
序号 No.	图 号 Part No.	名 称	Part Name	数量 Qty.	备 注 Remarks
1	Q67664	环箍 64	Loop hoop	1	
2	Q/YC198-20	螺塞 M20X1.5	Screw plug	2	
3	231-1008018B	压气机出口联接软管	Compressor outlet connecting hose	1	
4	Q/YC198-10	螺塞 M10X1	Screw plug	2	
5	Q/YC149-10	复合式密封垫圈 10	Seal washer 10	2	
6	Q150B1028	螺栓 M10X28	Bolt	4	
7	Q40310	垫圈 10	Washer 10	4	
8	Q40110	垫圈 10	Washer 10	4	
9	J8000-1008101	进气管	Intake manifold	1	
10	340-1013007	机油管夹	Oil pipe clamp	1	
11	J8000-1008102	进气接管	Air intake pipe	1	
12	475D-1008014A	进气弯管垫片	Intake syphon gasket	1	
13	475D-1008016A	垫片	Washer	2	
14	Q150B08110	螺栓 M8X110	Bolt	6	
15	Q40308	垫圈 8	Nut 8	18	
16	Q40108	垫圈 8	Nut 8	18	
17	Q150B0830	螺栓 M8X30	Bolt	12	

EWP=Easy wear part (易损件)



图 Drawing

10. J8000-1008200/03 排气管部件 Exhaust Pipe Parts



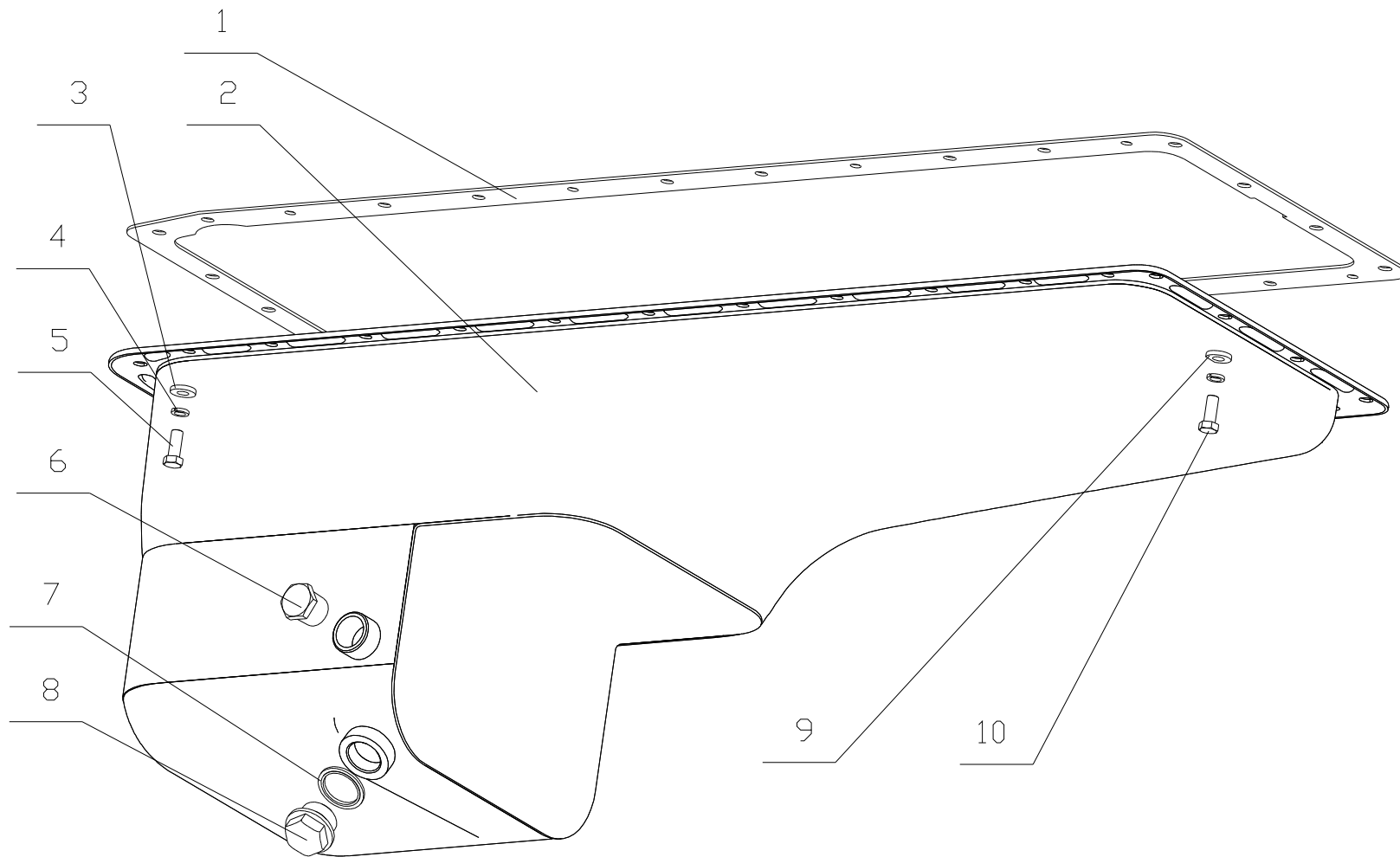
## 10. J8000-1008200/03 排气管部件 Exhaust Pipe Parts

序号 No.	图 号 Part No.	名 称	Part Name	数量 Qty.	备 注 Remarks
1	Q1840860TF2	螺栓 M8X60	Bolt M8X60	10	
2	Q1840825TF2	螺栓 M8X25	Bolt M8X25	2	
3	D2000-1008250B	排气管垫片组件	Exhaust pipe gasket subassembly	6	
4	J8000-1008204	排气管	Exhaust pipe	1	

EWP=Easy wear part (易损件)

图 Drawing

11. 340-1009000/05 油底壳总成 Oil Sump Assembly



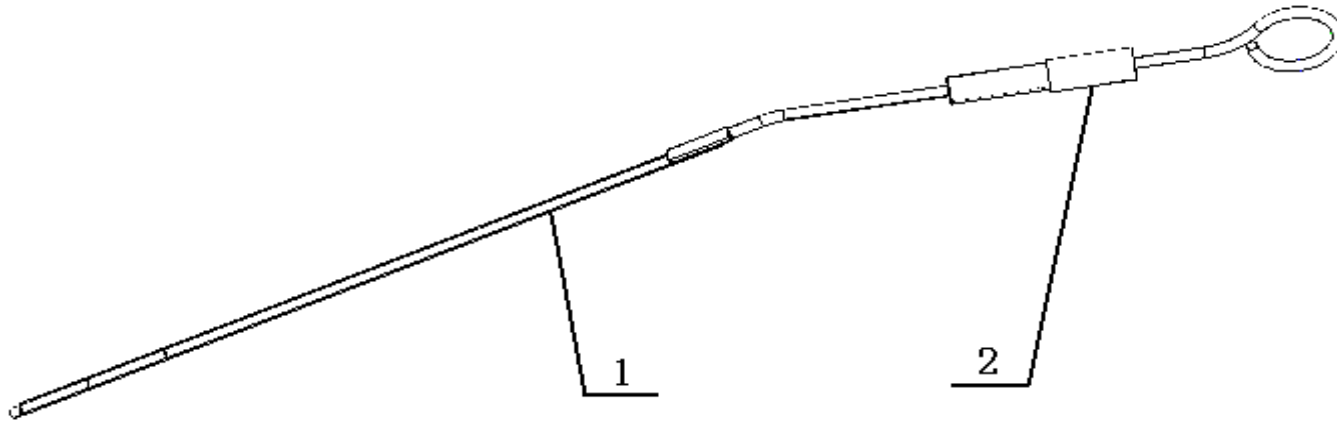
## 11. 340-1009000/05 油底壳总成 Oil Sump Assembly

序号 No.	图号 Part No.	名 称	Description	数量 Qty.	备注 Remark
1	J3200-1009012	油底壳垫片	Oil sump gasket	1	
2	340-1009020	油底壳焊接组件	Oil sump welded subassembly	1	
3	6105Q-3509013	垫圈	Washer	28	
4	Q40308	垫圈 8	Washer 8	30	
5	Q/YC1820816	螺栓 M8×16	Bolt	6	
6	Q618B04	螺塞 NPT1/2	Screw plug	1	
7	Q/YC149-27	复合式密封垫圈 27	Seal washer 27	1	
8	6105Q-1009030	放油塞总成	Oil release plug assembly	1	
9	D30-1009102A	垫圈	Washer	2	
10	Q/YC1820820	螺栓 M8×20	Bolt M8×20	24	

EWP=Easy wear part (易损件)

图 Drawing

12、630-1028000/01 油标尺总成 Oil Dipstick Assembly



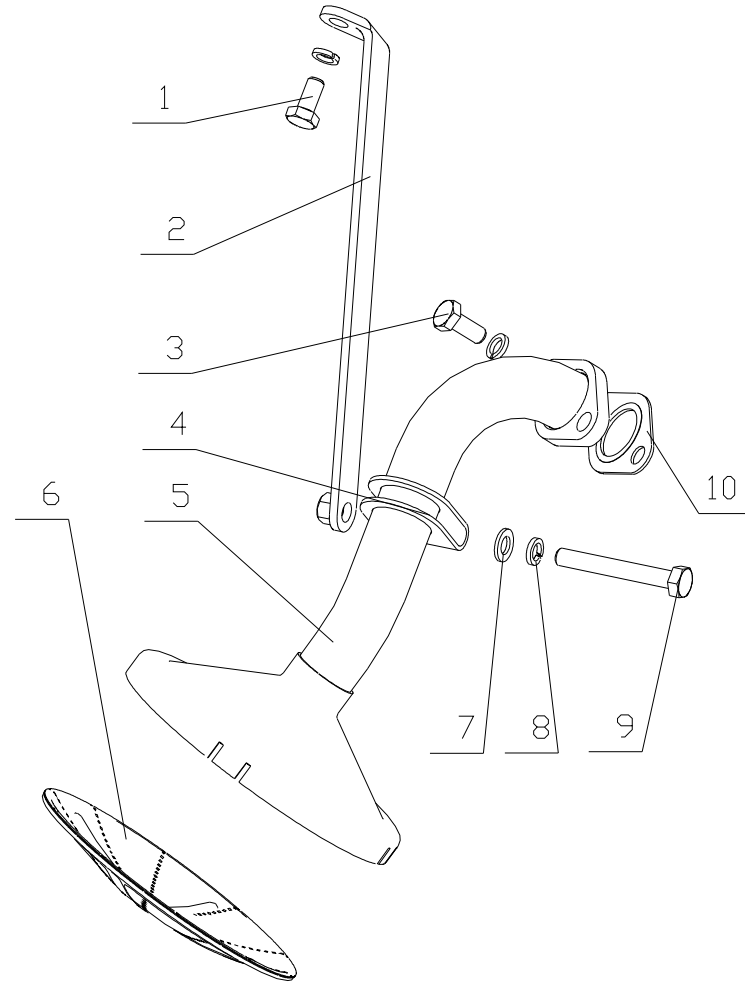
## 12、630-1028000/01 油标尺总成 Oil Dipstick Assembly

序号 NO.	图 号 Part No.	名 称	Name	数量 Qty.	备 注 Remark
1	630-1002110	油标尺焊接件	Oil dipstick weldment	1	
2	6105Q-1002081A	游标尺套管	Oil dipstick sleeve	1	

EWP=Easy wear part (易损件)

图 Drawing

**13. 340-1010000 /05 机油收集器总成 Oil Collector Assembly**



### 13. 340-1010000 /05 机油收集器总成 Oil Collector Assembly

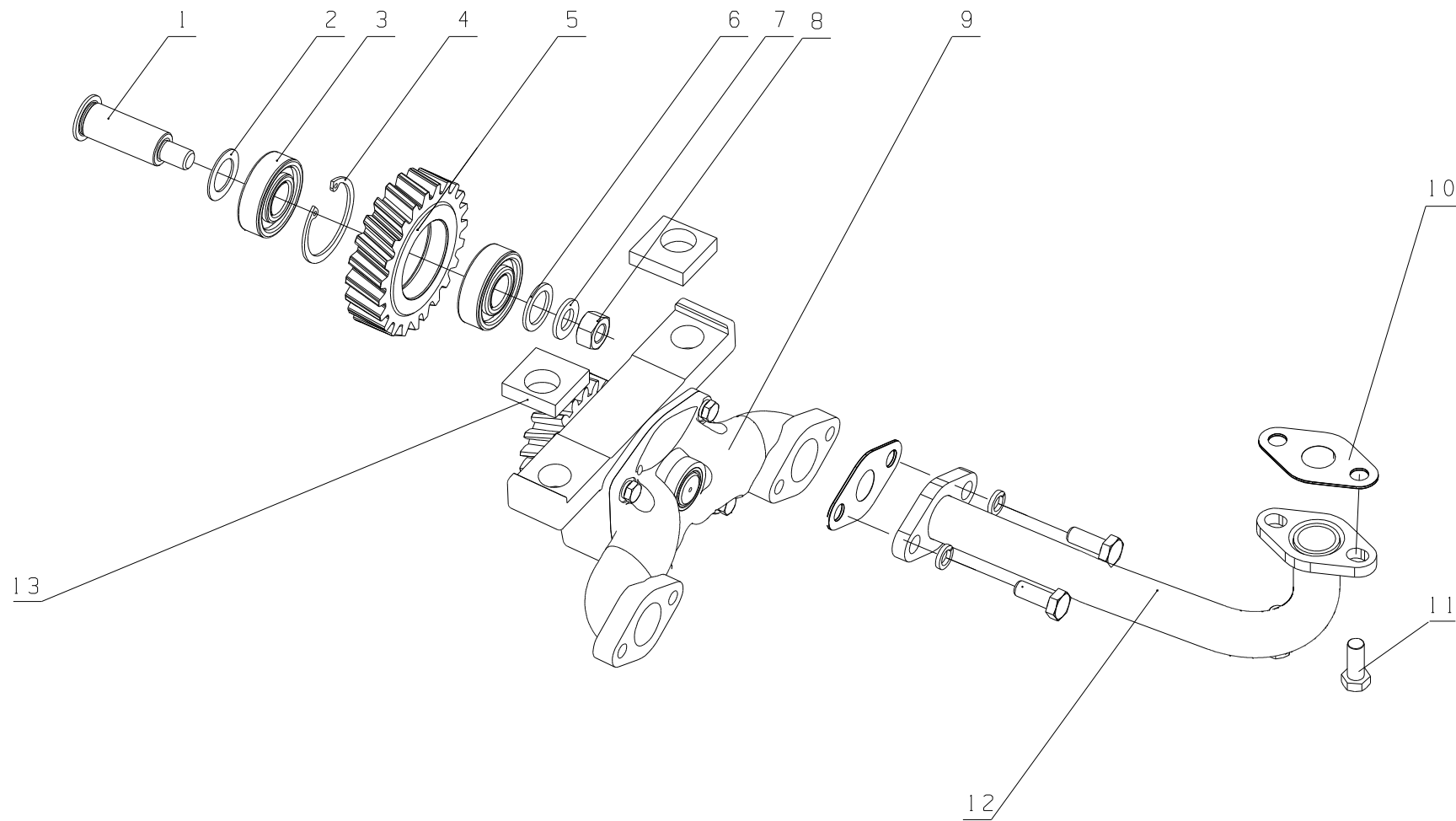
序号 No.	图号 Part No.	名 称	Description	数量 Qty.	备注 Remark
1	Q150B0816TF2	螺栓 M8X16	Bolt M8X16	1	
2	340-1010150	管夹支架焊接件	Pipe clip bracket weldment	1	
3	Q150B0818TF2	螺栓 M8X18	Bolt	2	
4	430-1010002	管夹	Pipe clamp	1	
5	340-1010120A	吸油管焊接件	Oil suction pipe weldment	1	
6	6105QA-1010130B	滤网总成	Filter screen assembly	1	
7	Q40008	垫圈 8	Washer 8	1	
8	Q40308	垫圈 8	Washer 8	4	
9	Q150B0860TF2	螺栓 M8X60	Bolt M8X60	1	
10	430-1010001A	垫片结合件	Gasket union part	1	

EWP=Easy wear part (易损件)



图 Drawing

14. B3000-1011010/05 机油泵总成 Oil Pump Assembly



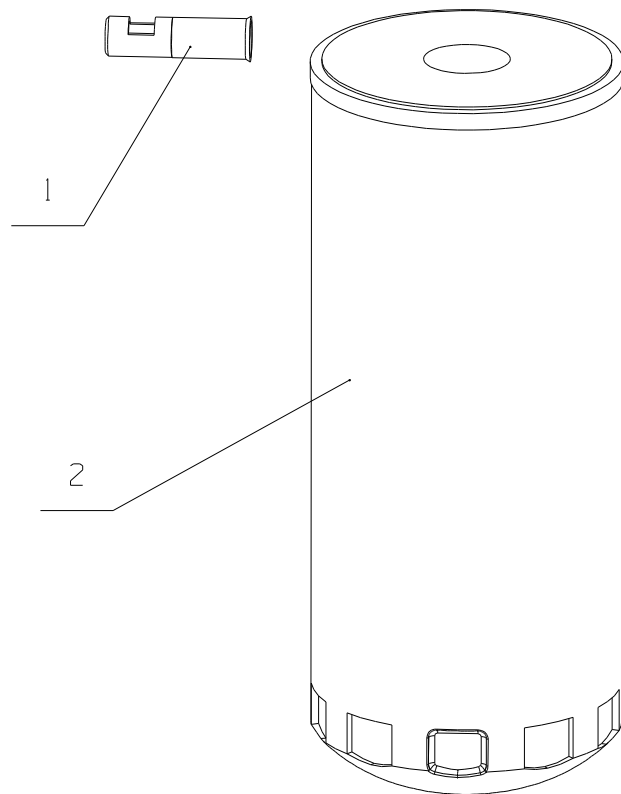
## 14. B3000-1011000/05 机油泵组件 Oil Pump Assembly

序号 No.	图 号 Part No.	名 称	Part Name	数量 Qty.	备 注 Remarks
1	430-1011013	机油泵中间齿轮轴	Oil pump middle gear shaft	1	
2	430-1011014	垫圈-中间传动齿轮	Washer-middle drive gear	1	
3	GB/T276-6203	滚动轴承 6203	Rolling bearing 6203	2	
4	Q43040	挡圈 40	Retainer 40	1	
5	430-1011011	机油泵中间齿轮	Oil pump middle gear	1	
6	430-1011012	间隔垫	Spacer	1	
7	Q40110	垫圈 10	Washer 10	1	
8	Q341B10	螺母 M10×1	Nut M10×1	1	
9	B3000-1011020A	机油泵部件	Oil pump part	1	
10	6105QA-1010110A	垫片结合件	Gasket component	2	易损件 EWP
11	Q1840820TF2	螺栓 M8×20	Bolt M8×20	4	
12	430-1011040	机油出油管总成	Oil outlet pipe assembly	1	
13	6105Q-1011015A	机油泵调整垫片	Oil pump adjusting washer	适量 proper amount	易损件 EWP

EWP=Easy wear part (易损件)

图 Drawing

15. J8001-1012000/02 机油滤清器总成 Oil Filter Assembly



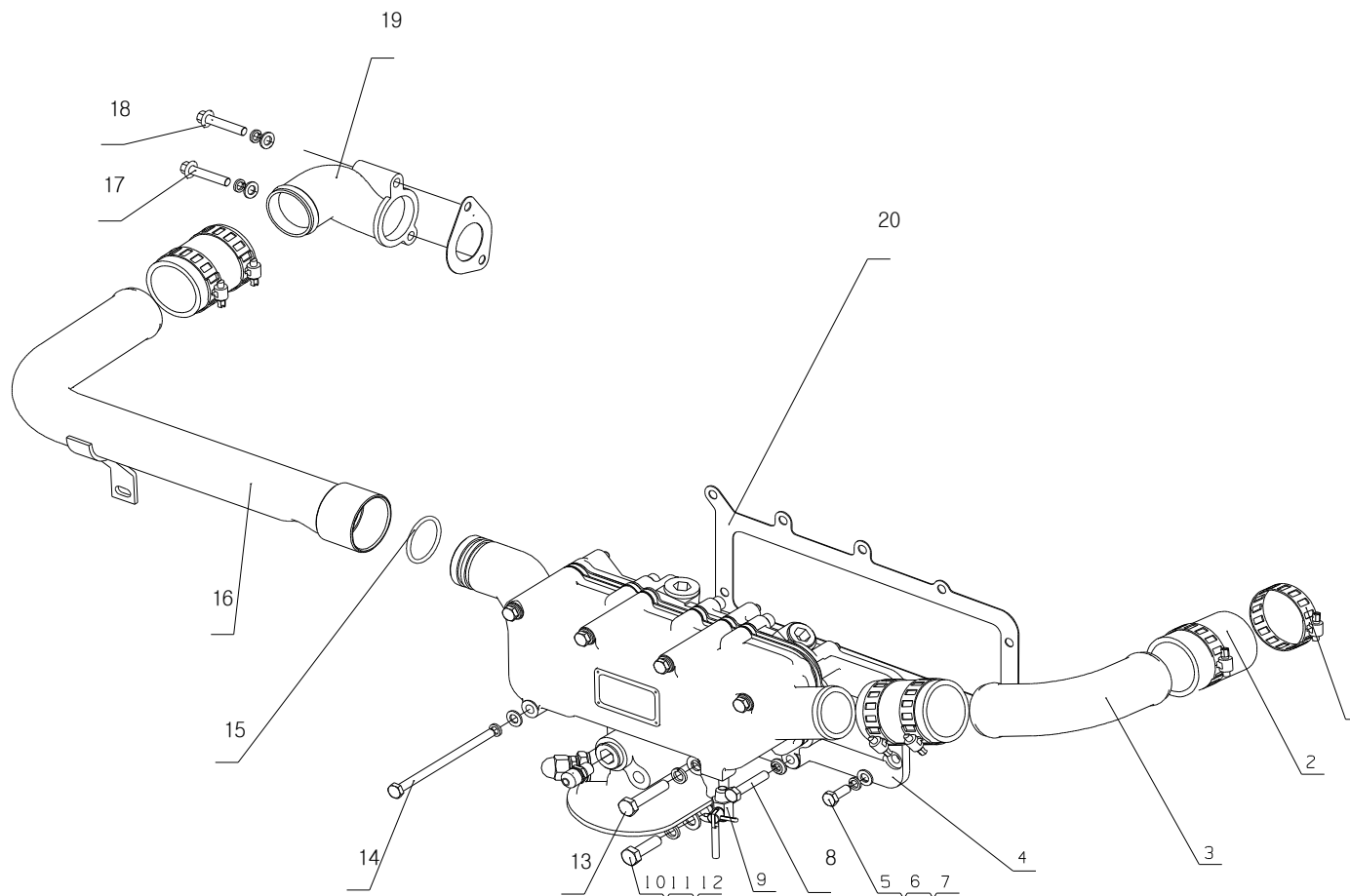
## 15. J8001-1012000/02 机油滤清器总成 Oil Filter Assembly

序号 No.	图 号 Part No.	名 称	Part Name	数量 Qty.	备 注 Remarks
1	6105Q-1012001	纸滤卸油导管	Paper filter oil drain pipe	1	
2	640-1012210	机油滤清器	Oil filter	1	易损件 EWP

EWP=Easy wear part (易损件)

图 Drawing

16. B8700-1013000/08 机油冷却器总成 Oil Cooler Assembly



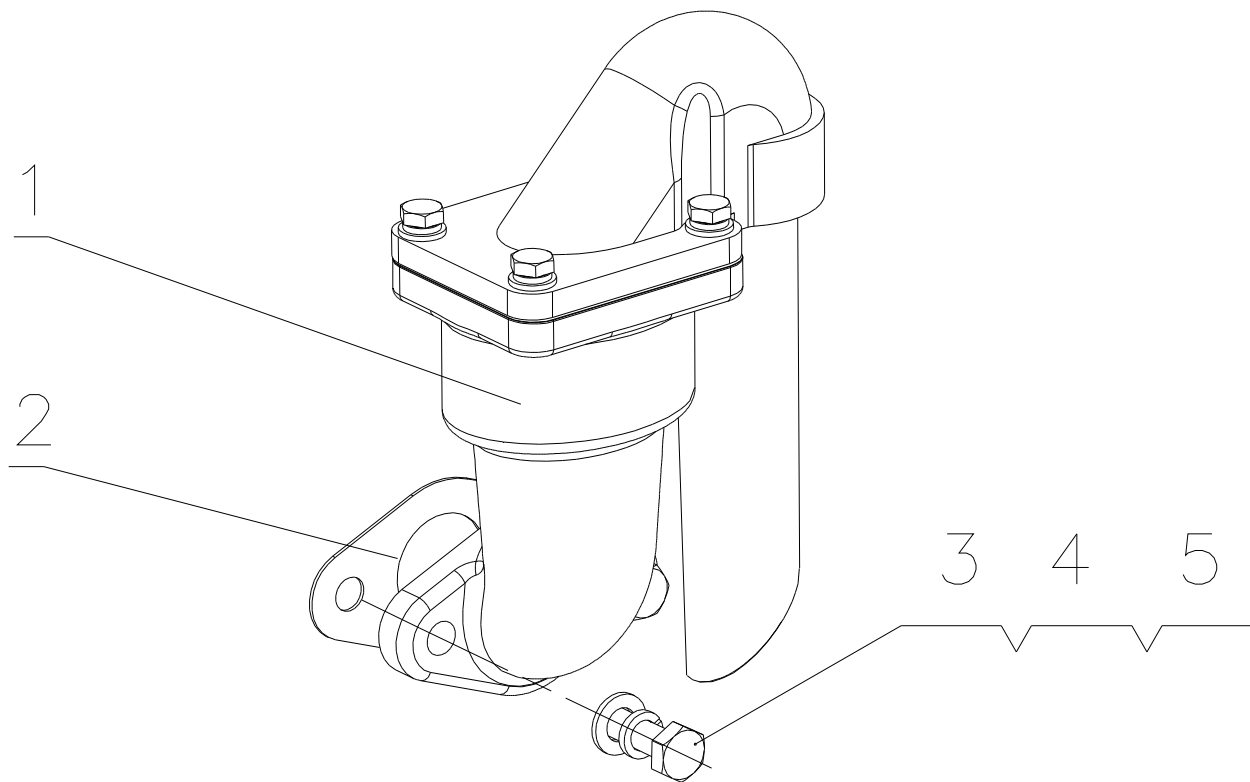
## 16. B8700-1013000/08 机油冷却器总成 Oil Cooler Assembly

序号 No.	图 号 Part No.	名 称	Part Name	数量 Qty.	备注 Remark
1	Q67664	环箍64	Loop hoop 64	6	易损件 EWP
2	3430-1013017A	胶管	Hose	3	易损件 EWP
3	B8700-1013060	机油冷却器进水管焊接件	Oil cooler water inlet pipe welded part	1	
4	3430-1013030B	机油冷却器	Oil cooler	1	
5	Q150B0822	螺栓 M8X22	Bolt M8X22	2	
6	Q40308	垫圈 8	Lock Washer 8	11	
7	Q40108	垫圈 8	Lock Washer 8	11	
8	Q150B0845	螺栓 M8X45	Bolt M8X45	2	
9	231-1305000	放水开关	Water drain cock	1	
10	Q150B1035	螺栓 M10X35	Bolt M10X35	3	
11	Q40310	垫圈 10	Lock Washer 10	4	
12	Q40110	垫圈 10	Lock Washer 10	4	
13	Q150B1050	螺栓 M10X50	Bolt M10X50	1	
14	Q150B08135	螺栓 M8X135	Bolt M8X135	5	
15	YC208-C04000S	O 形圈 3.55X40	O-ring 3.55X40	2	易损件 EWP
16	B3100-1013040	出水弯管焊接件	Water outlet elbow pipe weldment	1	
17	Q1840840	螺栓 M8X40	Bolt M8X40	1	
18	Q1840855	螺栓 M8X55	Bolt M8X55	1	
19	3430-1013011	机体进水管接头	water inlet pipe joint, engine block	1	
20	B3100-1013106A	垫片	Gasket	1	易损件 EWP

EWP=Easy wear part (易损件)

图 Drawing

**17. 6105Q-1014000A/03 呼吸器部件 Breather Part**



### 17. 6105Q-1014000A/03 呼吸器部件 Breather Part

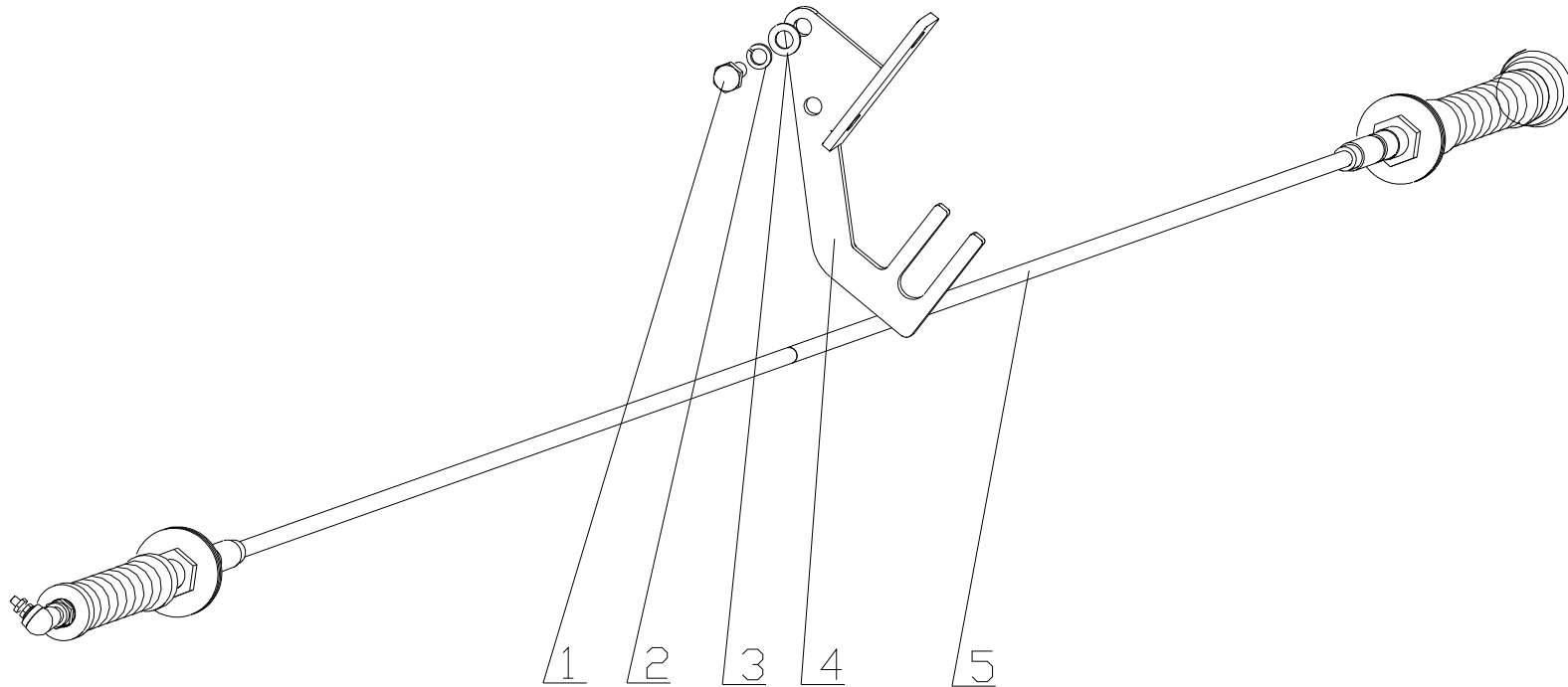
序号 No.	图 号 Part No.	名 称	Part Name	数量 Qty.	备 注 Remarks
1	6105Q-1014010A	呼吸器总成	Breather assembly	1	
2	6105Q-1014001A	呼吸器垫片	Breather spacer	1	易损件 EWP
3	Q40108	垫圈 8	Lock Washer 8	2	
4	Q40308	垫圈 8	Lock Washer 8	2	
5	Q150B0825	螺栓 M8X25	Bolt M8X25	2	

EWP=Easy wear part (易损件)



图 Drawing

18. B7648-1130000/03 燃油喷射泵附件总成 Fuel Injection Pump Accessory Assembly



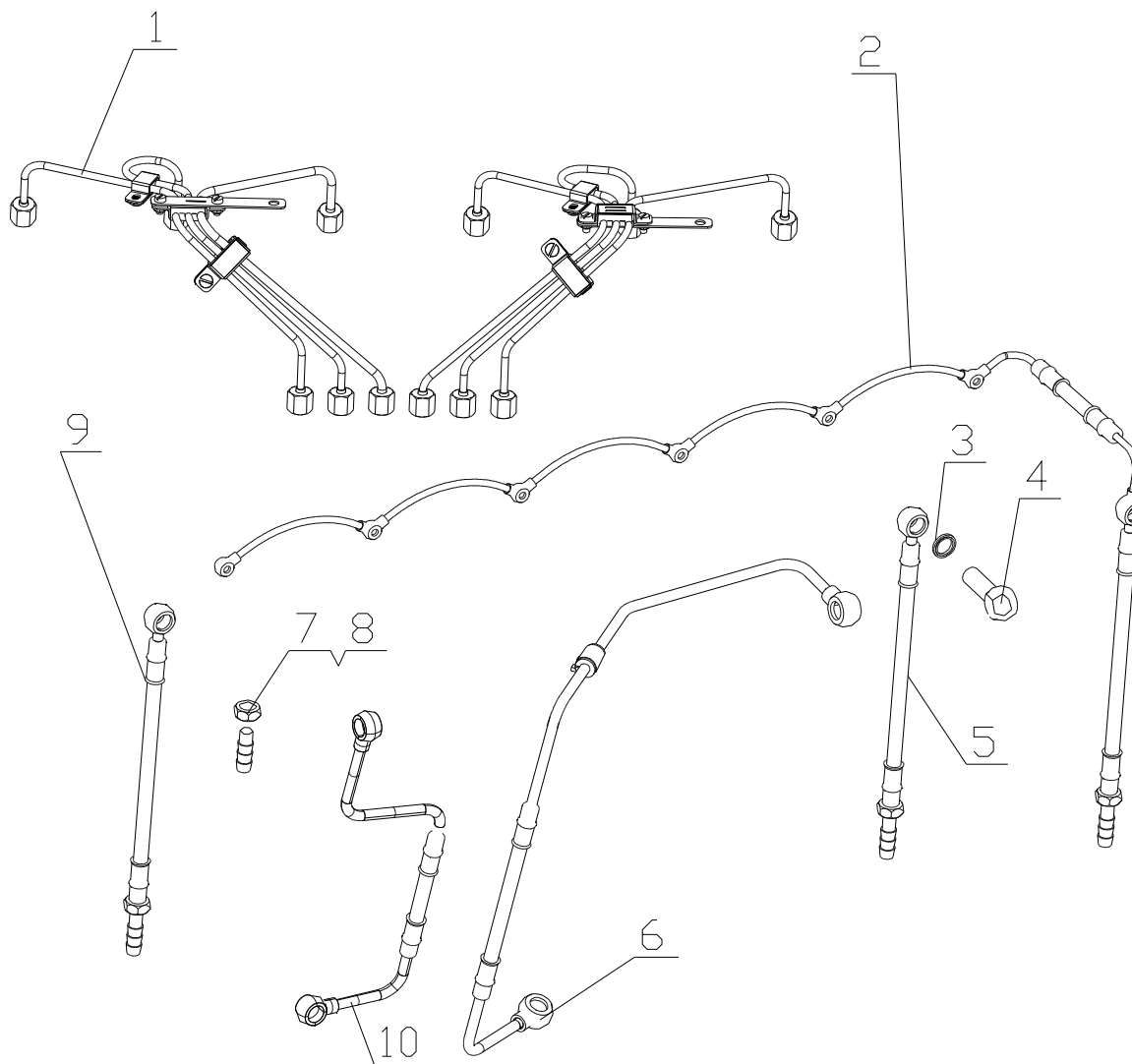
**18. B7648-1130000/03 燃油喷射泵附件总成 Fuel Injection Pump Accessory Assembly**

序号 No.	图号 Part No.	名 称	Description	数量 Qty.	备注 Remark
1	Q150B0820	螺栓 M8X20	Bolt M8X20	2	
2	Q40308	垫圈 8	Washer 8	2	
3	Q40108	垫圈 8	Washer 8	2	
4	B7648-1111070A	油门拉线支架	Accelerator pull cable bracket	1	
5	B7648-1111640	油门软轴	Accelerator flexible shaft	1	

EWP=Easy wear part (易损件)

图 Drawing

19. J80G0-1104000/03 供给系管路总成 Supply System Pipeline Assembly



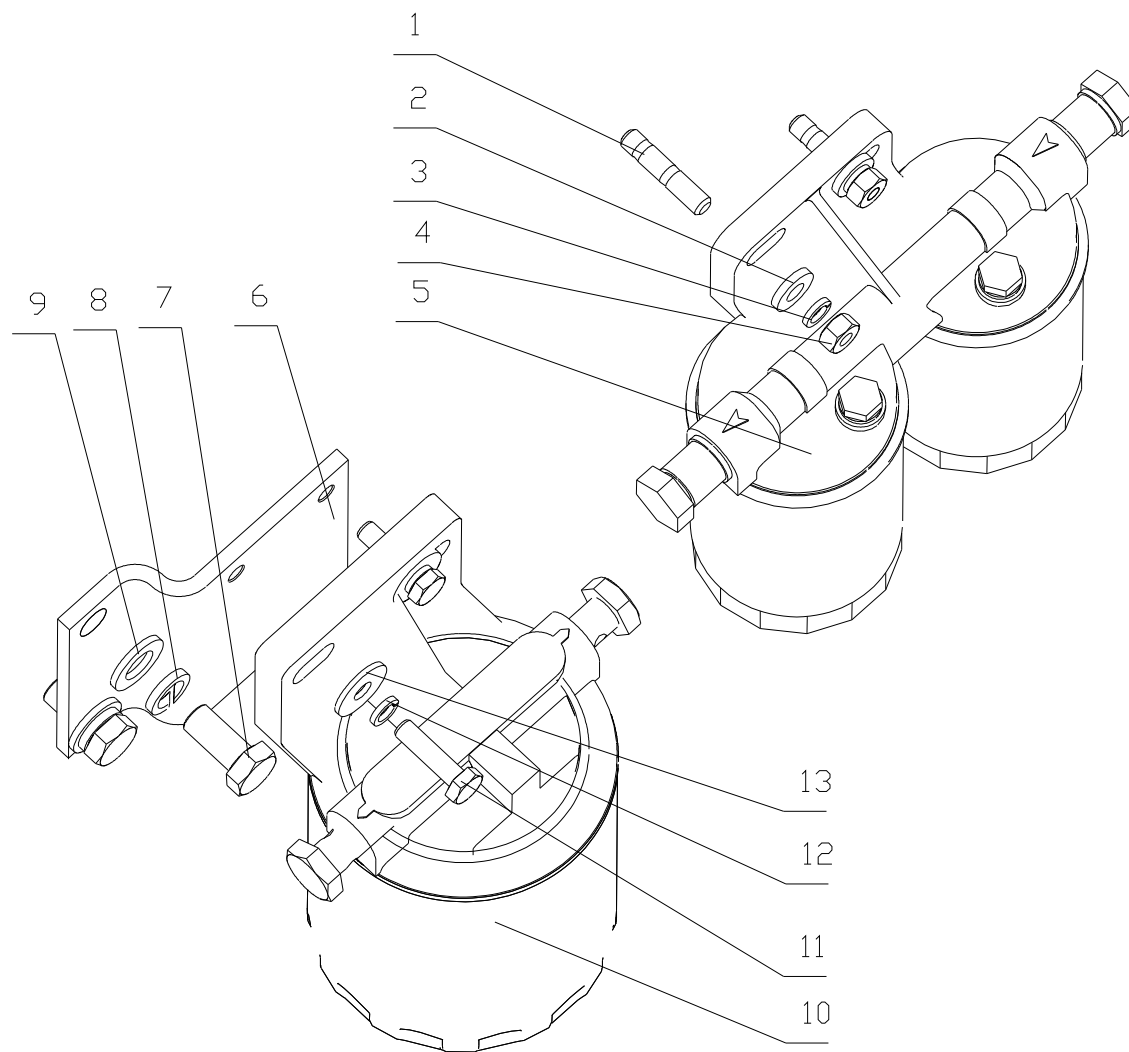
## 19. J80G0-1104000/03 供给系管路总成 Supply System Pipeline Assembly

序号 No.	图 号 Part No.	名 称	Part Name	数量 Qty.	备 注 Remarks
1	J8000-1104100A	高压油管部件	High pressure pipe parts	1	
2	J80G0-1104240	回油管组件	Fuel return pipe subassembly	1	
3	Q/YC149-14	复合式密封垫圈 14	Seal washer 14	4	
4	6QA6-1307017	管接螺栓	Pipe connecting bolt	2	
5	6105Q-1104090B	柴滤器进油管总成	Fuel filter fuel inlet pipe assembly	1	选装 Optional
	630-1104305	柴滤进油管 I	Fuel filter fuel inlet pipe	1	选装 Optional
	630-1104403	油管	Fuel pipe	1	选装 Optional
	6105Q-1104100B	喷油泵进油管总成	Fuel injection pump fuel inlet pipe assembly	1	选装 Optional
6	695-1104050	油箱到喷油泵油管部件	Fuel pipe from fuel tank to fuel injection pump	1	
7	E0200-1118013	螺母 M8X10	Nut	4	
8	E0800-1118011	双头螺柱	Stud	4	
9	J80G0-1104250	回油接管组件	Fuel return connecting pipe subassembly	1	
10	B7617-1104400	柴滤器至输油泵油管部件	Fuel pipe from fuel filter to fuel delivery pump	1	

EWP=Easy wear part (易损件)

图 Drawing

20. B7640-1105000/01 柴油滤清器总成 Fuel Filter Assembly



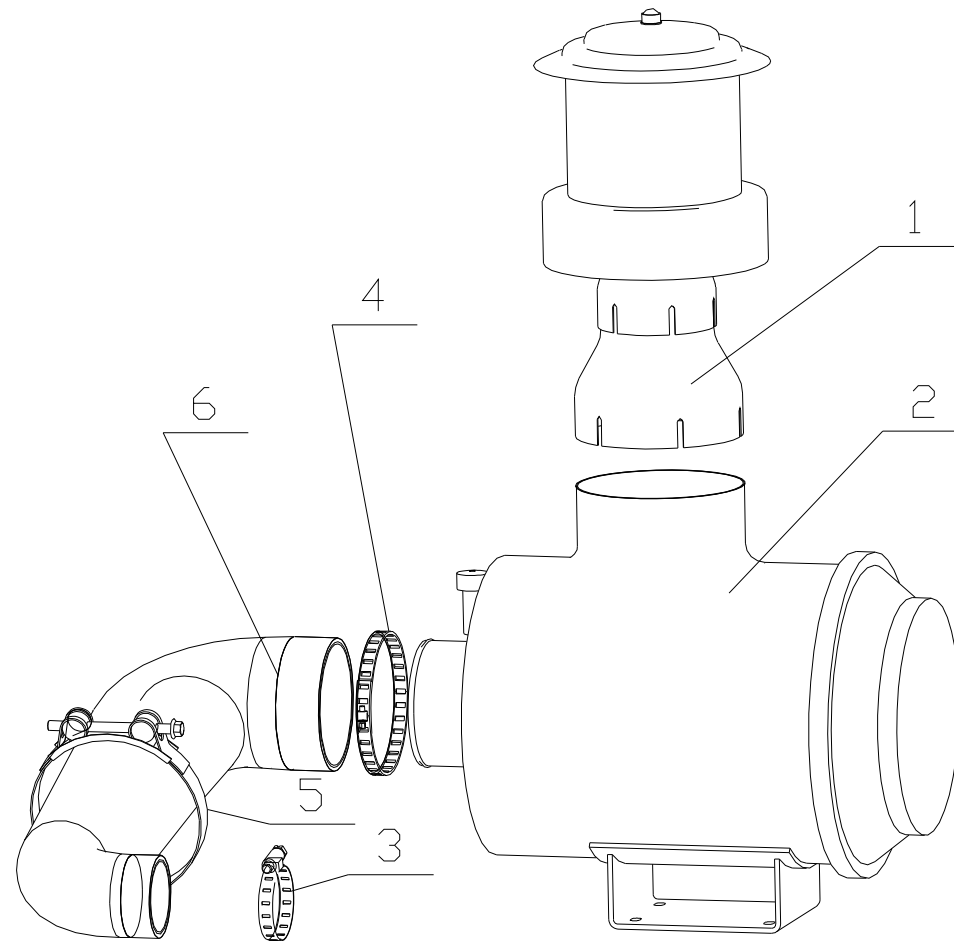
## 20. B7640-1105000/01 柴油滤清器总成 Fuel Filter Assembly

序号 No.	图号 Part No.	名 称	Description	数量 Qty.	备注 Remark
1	Q1200830	螺柱 M8X30	Stud	2	
2	Q40208	垫圈 8	Washer8	2	
3	Q40308	垫圈 8	Washer8	2	
4	Q340B08	螺母 M8	Nut M8	2	
5	630-1105010	柴油滤清器	Fuel filter	1	
6	B7604-1105001B	柴油滤清器座	Fuel filter seat	1	
7	Q150B1225	螺栓 M12X25	Bolt	2	
8	Q40312	垫圈 12	Lock Washer 12	2	
9	Q40112	垫圈 12	Lock Washer 12	2	
10	B7604-1105200	旋装沉淀器	Rotational precipitator	1	
11	Q150B0830	螺栓 M8X30	Bolt	2	
12	Q40308	垫圈 8	Washer 8	2	
13	Q40208	垫圈 8	Washer 8	2	

EWP=Easy wear part (易损件)

图 Drawing

21. J8000-1109000/06 空气滤清器总成 Air Cleaner Assembly



## 21. J8000-1109000/06 空气滤清器总成 Air Cleaner Assembly

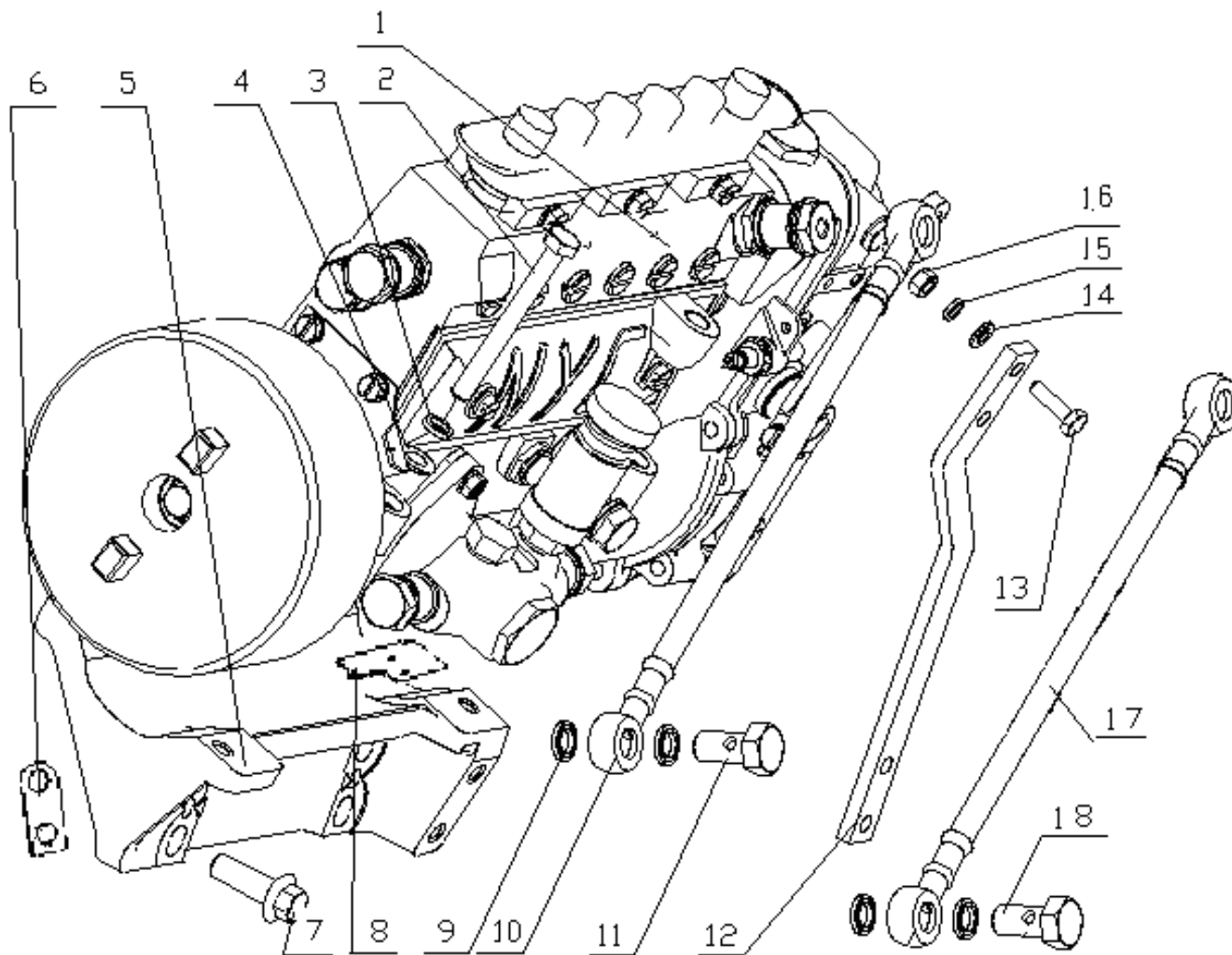
序号 No.	图号 Part No.	名 称	Description	数量 Qty.	备注 Remark
1	J8004-1109300	空气预滤器	Air prefilter	1	
2	J8004-1109100	空气滤清器	Air cleaner	1	
3	Q67689	环箍 89	Loop hoop	1	
4	Q676140	环箍 140	Loop hoop	1	
5	M8801-1109140	空滤器喉箍组件	Air cleaner clamp ring subassembly	1	
6	J8000-1109001	空气滤清器链接胶管	Air cleaner hinge rubber pipe		

EWP=Easy wear part (易损件)



图 Drawing

22. J8004-1111000/01 喷油泵总成 Injection Pump Assembly



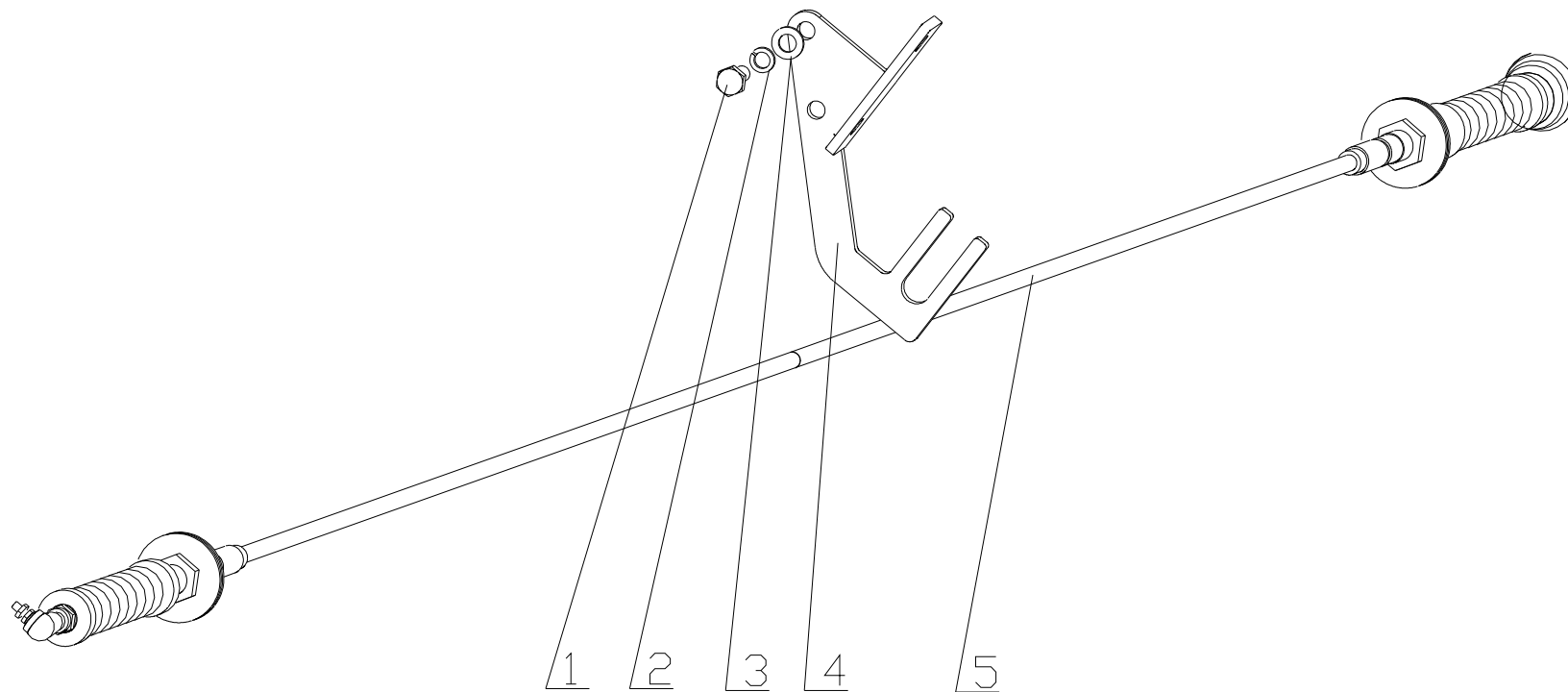
## 22. J8004-1111000/01 喷油泵总成 Injection Pump Assembly

序号 No.	图号 Part No.	名 称	Description	数量 Qty.	备注 Remark
1	J8004-1111010A-493	喷油泵	Injection pump	1	
2	Q150B0875	螺栓 M8X75	Bolt	4	
3	Q40308	垫圈 8	Washer 8	4	
4	GB/T849-8	垫圈 8	Washer 8	4	
5	630-1111005A	喷油泵托架	Injection pump bracket	1	
6	6105Q-1111006	调整垫片	Adjusting gasket	适量 Proper amount	
7	Q1841030TF2	螺栓 M10X30	Bolt	4	
8	6105Q-1111007	弧面调整垫片	Cambered surface adjusting gasket	适量 Proper amount	
9	Q/YC149-12	复合式密封垫圈 12	Compound seal washer	4	
10	330-1111030D	回油管组件	Fuel return pipe subassembly	1	
11	430-1111034	接头螺栓	Joint bolt	1	
12	641-1111001	调速器附加手柄	Auxiliary handle of governor	1	
13	Q150B0620	螺栓 M6X20	Bolt	2	
14	Q40106	垫圈 6	Washer 6	2	
15	Q40306	垫圈 6	Washer 6	2	
16	Q340B06	螺母 M6	Nut M6	2	
17	B7707-1111070A	增压补偿管	Turbocharging compensation pipe	1	
18	Q/YC901-1C1010	铰接螺栓 M10X1	Hinge bolt	1	

EWP=Easy wear part (易损件)

图 Drawing

23. B7648-1130000/03 燃油喷射泵附件总成 Fuel Injection Pump Accessory Assembly



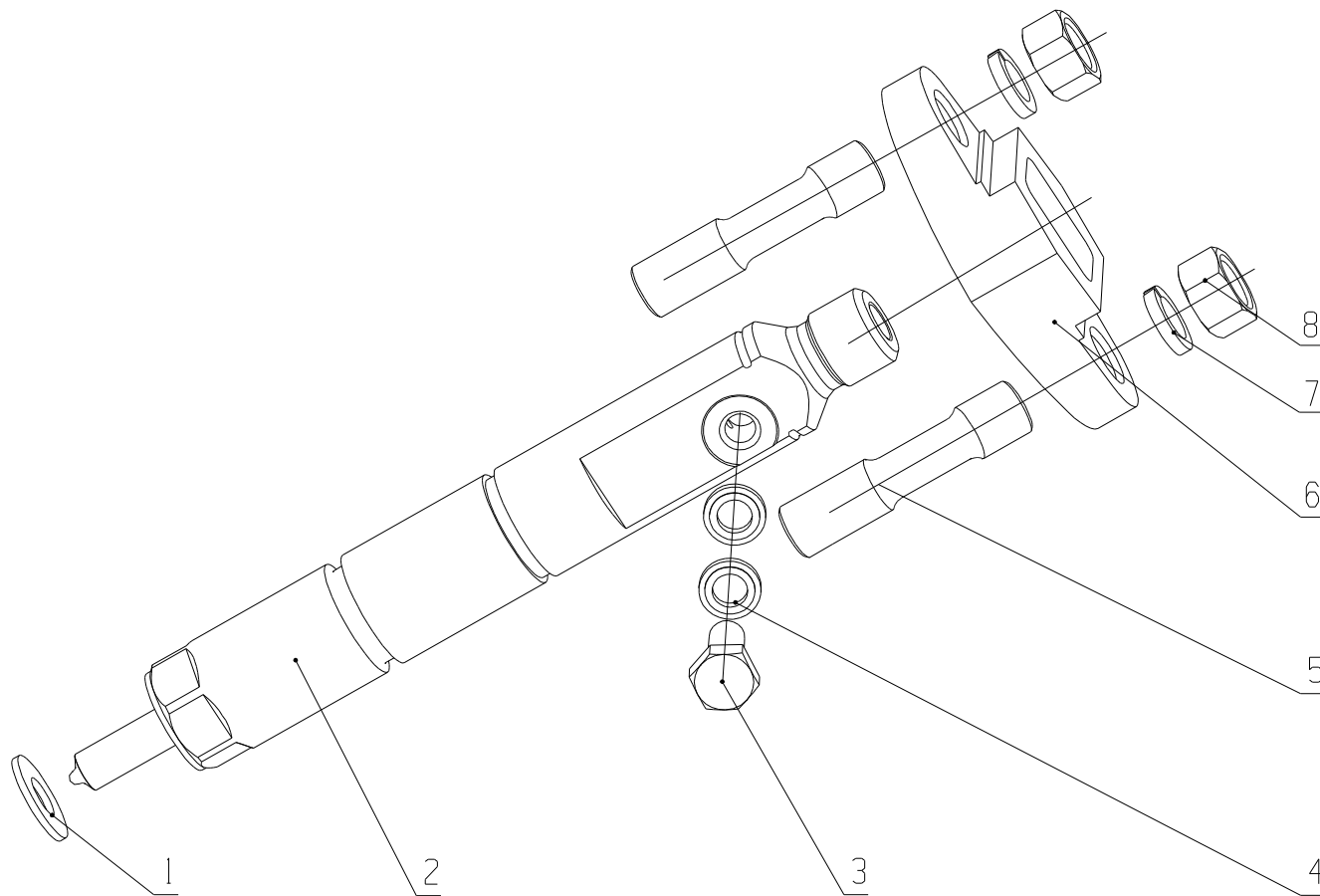
**23. B7648-1130000/03 燃油喷射泵附件总成 Fuel Injection Pump Accessory Assembly**

序号 No.	图号 Part No.	名 称	Description	数量 Qty.	备注 Remark
1	Q150B0820	螺栓 M8X20	Bolt M8X20	2	
2	Q40308	垫圈 8	Washer 8	2	
3	Q40108	垫圈 8	Washer 8	2	
4	B7649-1111070A	油门拉线支架	Accelerator pull cable bracket	1	
5	B7648-1111640	油门软轴	Accelerator flexible shaft	1	

EWP=Easy wear part (易损件)

图 Drawing

24. J3400-1112000/03 喷油器总成 Injector Assembly



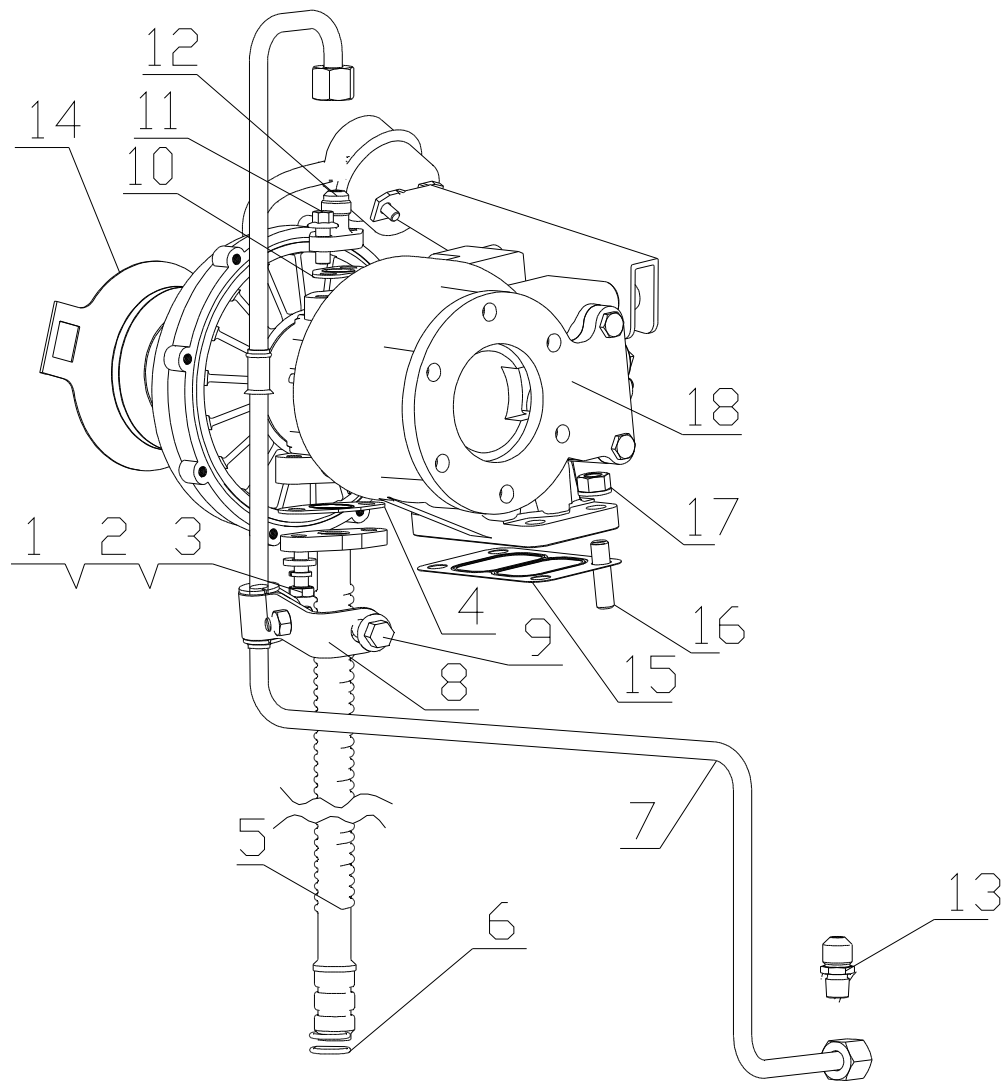
## 24. J3400-1112000/03 喷油器总成 Injector Assembly

序号 No.	图号 Part No.	名 称	Part Name	数量 Qty.	备注 Remark
1	630-1112001	喷油器垫片	Injector gasket	6	
2	J3400-1112010	喷油器	Injector	6	欧亚 Ouya
	J3400-1112050	油嘴偶件	Nozzle matching parts	6	易损件 EWP
2	J3400-1112010A	喷油器	Injector	6	德尔福 deerfu
	J3400-1112050A	油嘴偶件	Nozzle matching parts	6	易损件 EWP
2	J3400-1112010B	喷油器	Injector	6	北油 beiyou
	J3400-1112050B	油嘴偶件	Nozzle matching parts	6	易损件 EWP
3	150-1112012A	螺栓	Bolt	6	
4	Q/YC149-6	复合式密封垫圈 6	Compound seal washer 6	12	易损件 EWP
5	Q1201035TF2	螺柱 M10×35	Bolt	12	
6	A30-1112022A	固定板	Lock plate	12	
7	Q40310	垫圈 10	Washer10	12	
8	Q340B10	螺母 M10	Nut M10	12	

EWP=Easy wear part (易损件)

图 Drawing

25. J7M00-1118000/01 增压器总成 Turbocharger Assembly



## 25. J7M00-1118000/01 增压器总成 Turbocharger Assembly

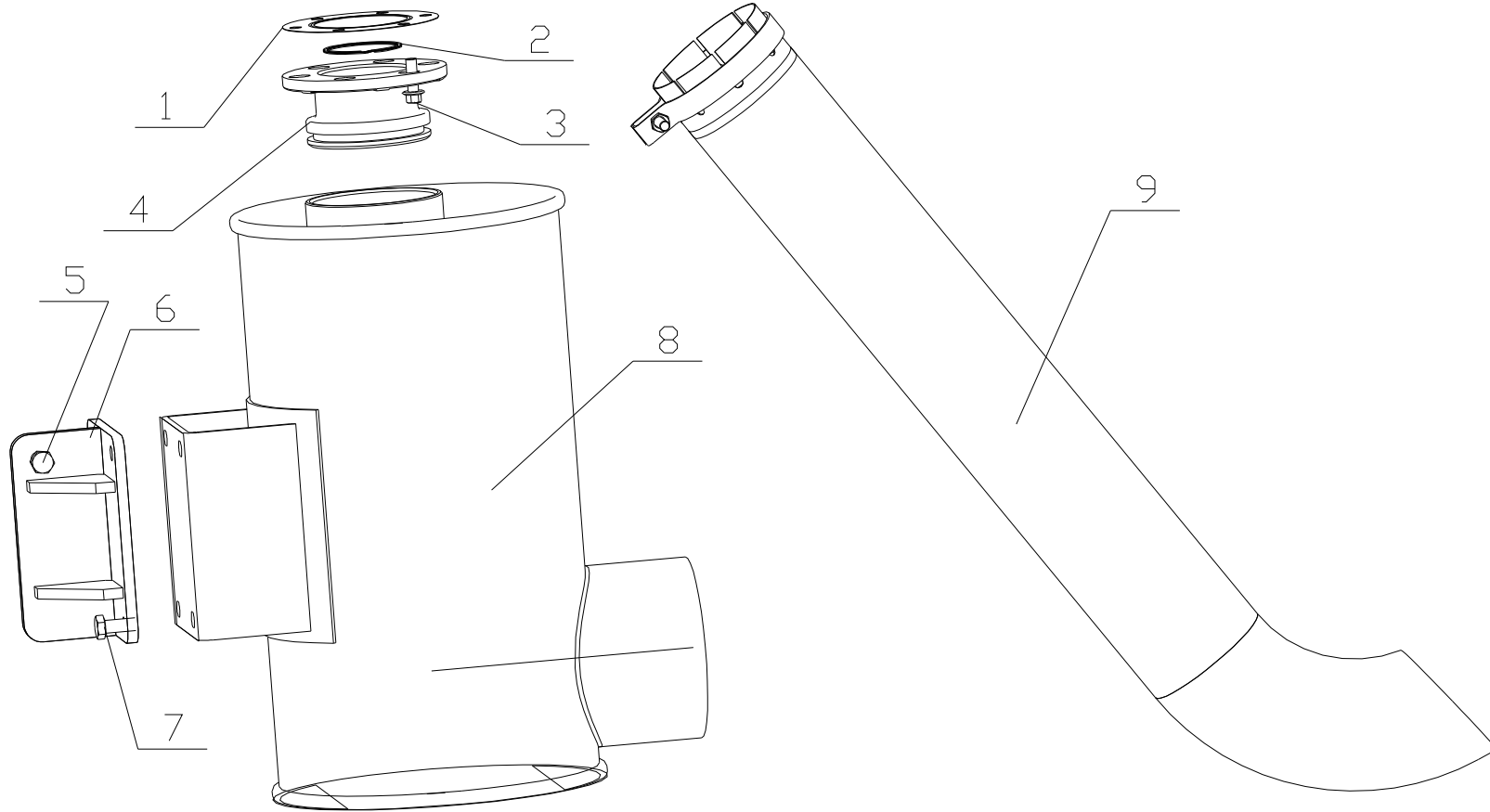
序号 NO.	图号 Part No.	名 称	Part Name	数量 Qty	备注 Remark
1	Q150B0825TF2	螺栓 M8X25	Bolt	2	
2	Q40308	垫圈 8	Nut 8	2	
3	6105Q-3509013	垫圈	Washer	2	
4	L3400-1118301A	垫片	Washer	1	
5	J8000-1118340	增压器回油管	Turbocharger oil return pipe	1	
6	YC208-B01700F	O 形圈 2.65X17	O-ring	1	
7	J8000-1118240A	进油管焊接组件	Oil inlet pipe welded subassembly	1	
8	J8000-1118270	管夹组件	Pipe clamp subassembly	1	
9	Q1841016TF2	螺栓 M10X16	Bolt	1	
10	150-1118031B	垫片	Washer	1	
11	Q1840820TF2	螺栓 M8X20	Bolt	2	
12	475D-1118211	增压器进油接头	Turbocharger oil inlet joint	1	
13	L3000-1118031	增压器进油管接头	Turbocharger oil inlet pipe joint	1	
14	G3228-1000092	排气管封口盖	Exhaust pipe seal camp	1	
15	475D-1118001B	增压器垫片	Turbocharger gasket	1	
16	150-1118001	双头螺柱	Stud	4	
17	M3000-1008206B	螺母	Nut	4	
18	J7M00-1118100-502	增压器	Turbocharger	1	选装 Optional
	J7M00-1118100-383	增压器	Turbocharger	1	选装 Optional

EWP=Easy wear part (易损件)



图 Drawing

26. J8000-1201000/09 消声器总成 Muffler Assembly



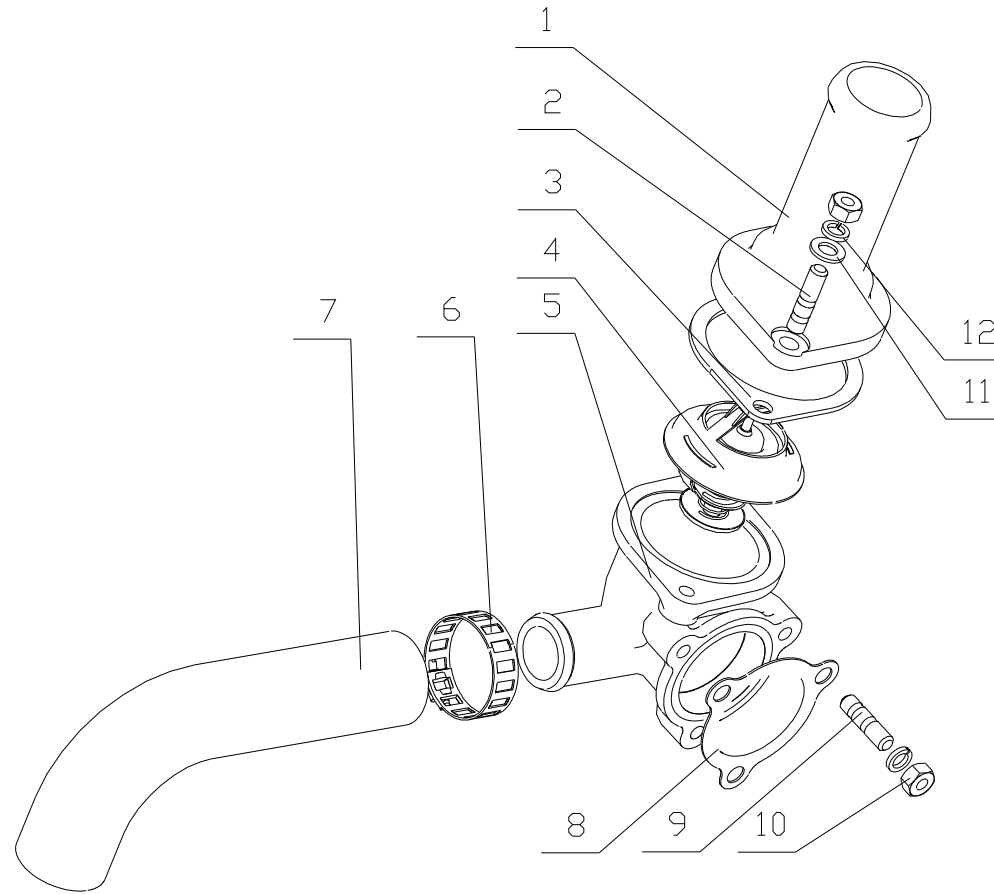
## 26. J8000-1201000/09 消声器总成 Muffler Assembly

序号 NO.	图号 Part No.	名 称	Part Name	数量 Qty	备注 Remark
1	475D-1008026A	垫片	Washer	1	
2	M3001-1008223	密封环	Seal ring	3	
3	Q1840825TF2	螺栓 M8X25	Bolt	6	
4	J7M00-1201003	消声器进气接管	Muffler air inlet connecting pipe	1	
5	Q150B1028	螺栓 M10X28	Bolt	4	
6	J8000-1201050	消声器支架焊接件	Muffler bracket welded part	1	
7	Q150B1025	螺栓 M10X25	Bolt	4	
8	J7M00-1201100	消声器	Muffler	1	
9	M8801-1201200	消声器排烟器	Muffler smoke ejector	1	

EWP=Easy wear part (易损件)

图 Drawing

## 27. J8000-1306000/05 调温器总成 Thermostat Assembly



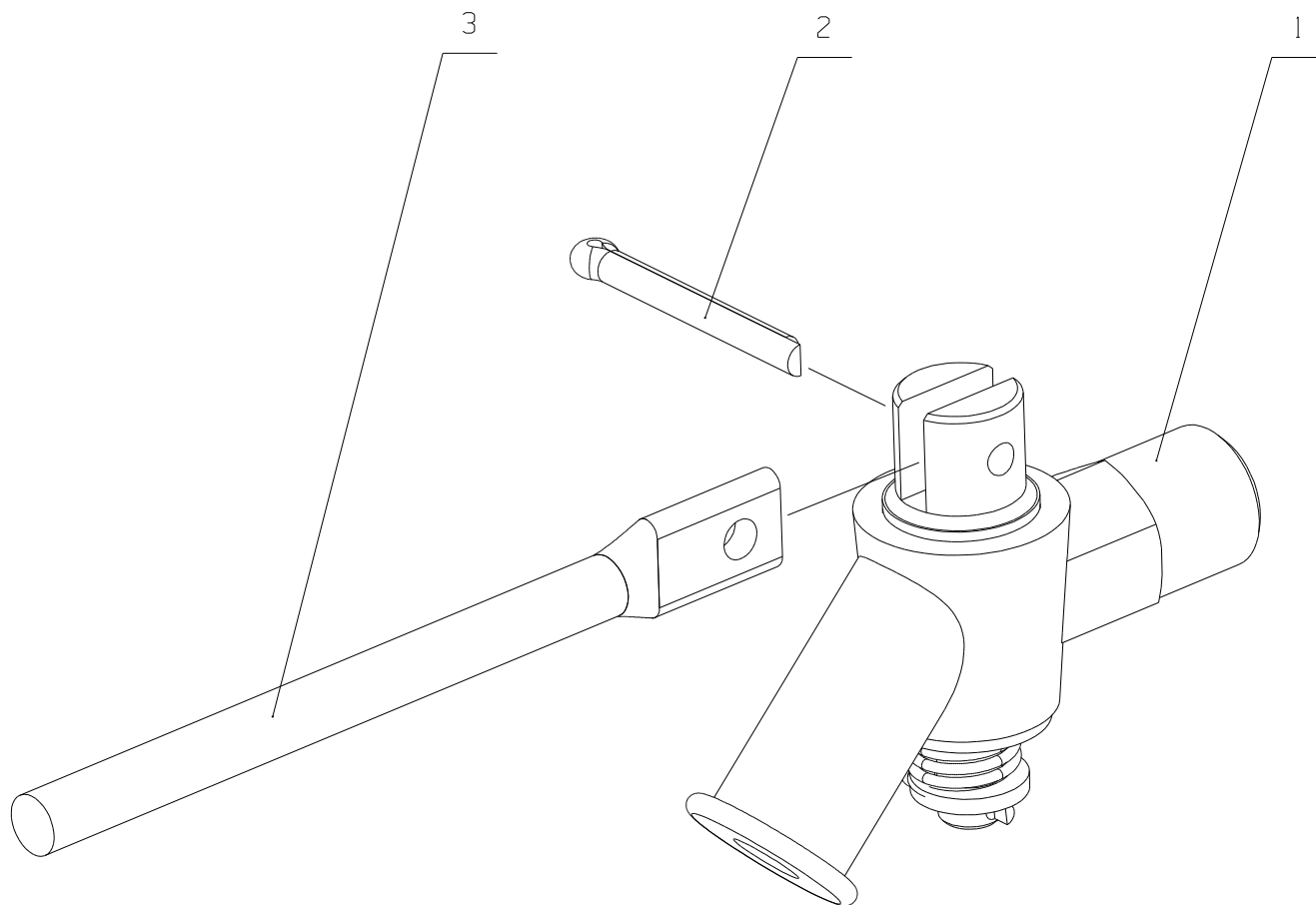
## 27. J8000-1306000/05 调温器总成 Thermostat Assembly

序号 No.	图号 Part No.	名 称	Description	数量 Qty.	备注 Remark
1	377A-1303011	节温器座盖	Thermostat seat cover	1	
2	Q1200825	螺柱 M8X25	Bolt M8X25	2	
3	6105Q-1303012A	节温器盖垫片	Thermostat cover gasket	1	
4	530-1306010A	蜡式调温器	Wax thermostat	1	
5	630-1303014D	节温器座	Thermostat seat	1	
6	Q67645	环箍 45	Loop hoop	2	
7	B8800-1303016	回水胶管	Water return rubber pipe	1	
8	6105Q-1303013	节温器座垫片	Thermostat seat gasket	1	
9	Q1200822	螺柱 M8X22	Stud	3	
10	Q340B08	螺母 M8	Nut M8	5	
11	Q40108	垫圈 8	Washer 8	5	
12	Q40308	垫圈 8	Washer 8	5	

EWP=Easy wear part (易损件)

图 Drawing

28. 631-1305000/05 放水开关总成 Water Drain Cock Assembly



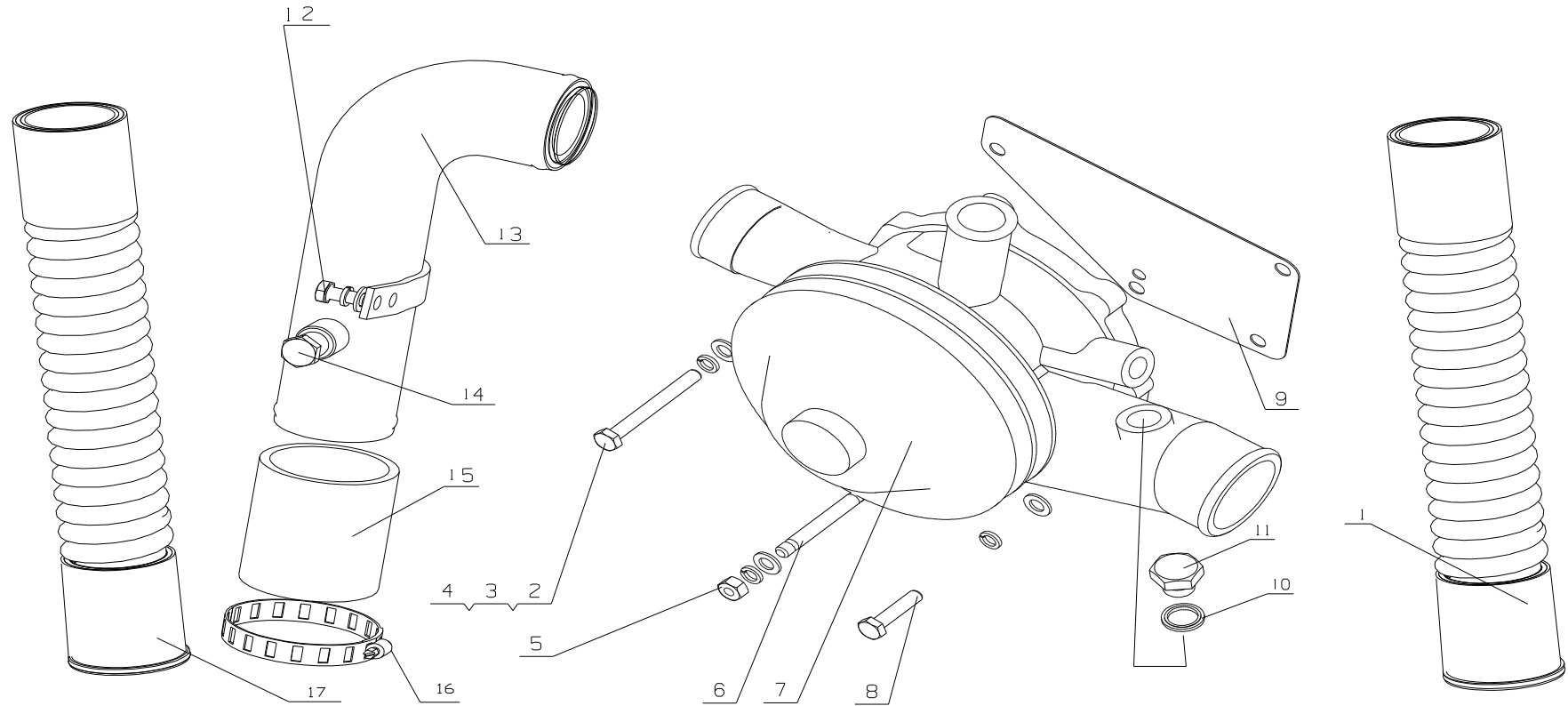
## 28. 631-1305000/06 放水开关总成 Water Drain Cock Assembly

序号 No.	图 号 Part No.	名 称	Part Name	数量 Qty.	备 注 Remarks
1	6105Q-1305010A	放水阀部件	Water drain cock parts	1	
2	Q5003220	销 3.2X20	Pin 3.2X20	1	
3	150-1305015	操纵杆	Control lever	1	

EWP=Easy wear part (易损件)

图 Drawing

29. J8004-1307000/03 水泵总成 Water Pump Assembly



## 29. J8004-1307000/03 水泵总成 Water Pump Assembly

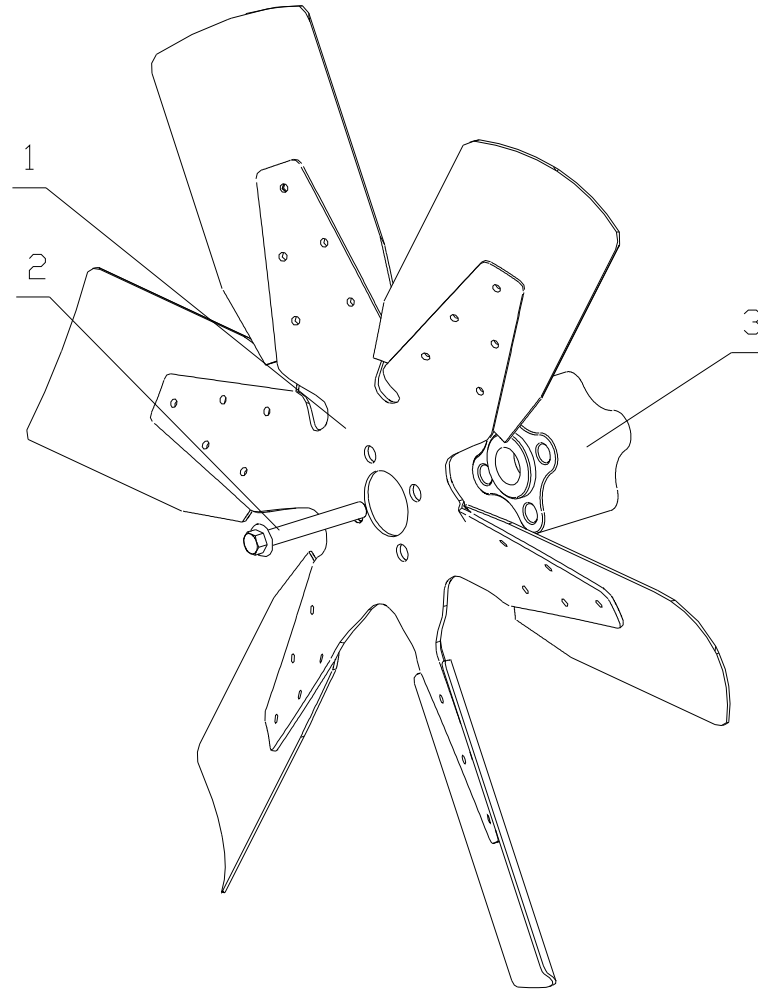
序号 Item	图号 Parts No.	名 称	Part Name	数量 Qty.	备 注 Remark
1	B7604-1303041	输水螺纹胶管	Water delivery screw rubber pipe	1	
2	Q40108	垫圈	Washer	3	易损件 EWP
3	Q40308	垫圈	Washer	3	易损件 EWP
4	Q150B0870TF2	螺栓 M8X70	Bolt	1	
5	Q340B08	螺母 8	Bolt 8	1	
6	Q1200870TF2	螺柱 M8X70	Bolt M8X70	1	
7	J8000-1307100A	水泵	Water pump	1	
8	Q150B0865TF2	螺栓 M8X65	Bolt	1	
9	3430-1307011B	水泵衬垫	Water pump lining washer	1	易损件 EWP
10	Q/YC149-14	复合式密封垫圈 14	Compound washer14	1	易损件 EWP
11	Q/YC198-14	螺塞 M14X1.5	Bolt 14X1.5	1	
12	Q150B0820	螺栓 M8X20	Bolt	2	
13	J8004-1307250A	水泵进水管组件	Water pump water inlet pipe subassembly	1	
14	Q618B03	螺塞 NPT3/8	Screw plug	1	
15	A3000-1307005	胶管	Rubber pipe	1	
16	Q67657	环箍 57	Loop hoop	2	
17	J8004-1307009	胶管	Rubber pipe	1	

EWP=Easy wear part (易损件)



图 Drawing

30、396-1308000/02 风扇总成 Fan Assembly



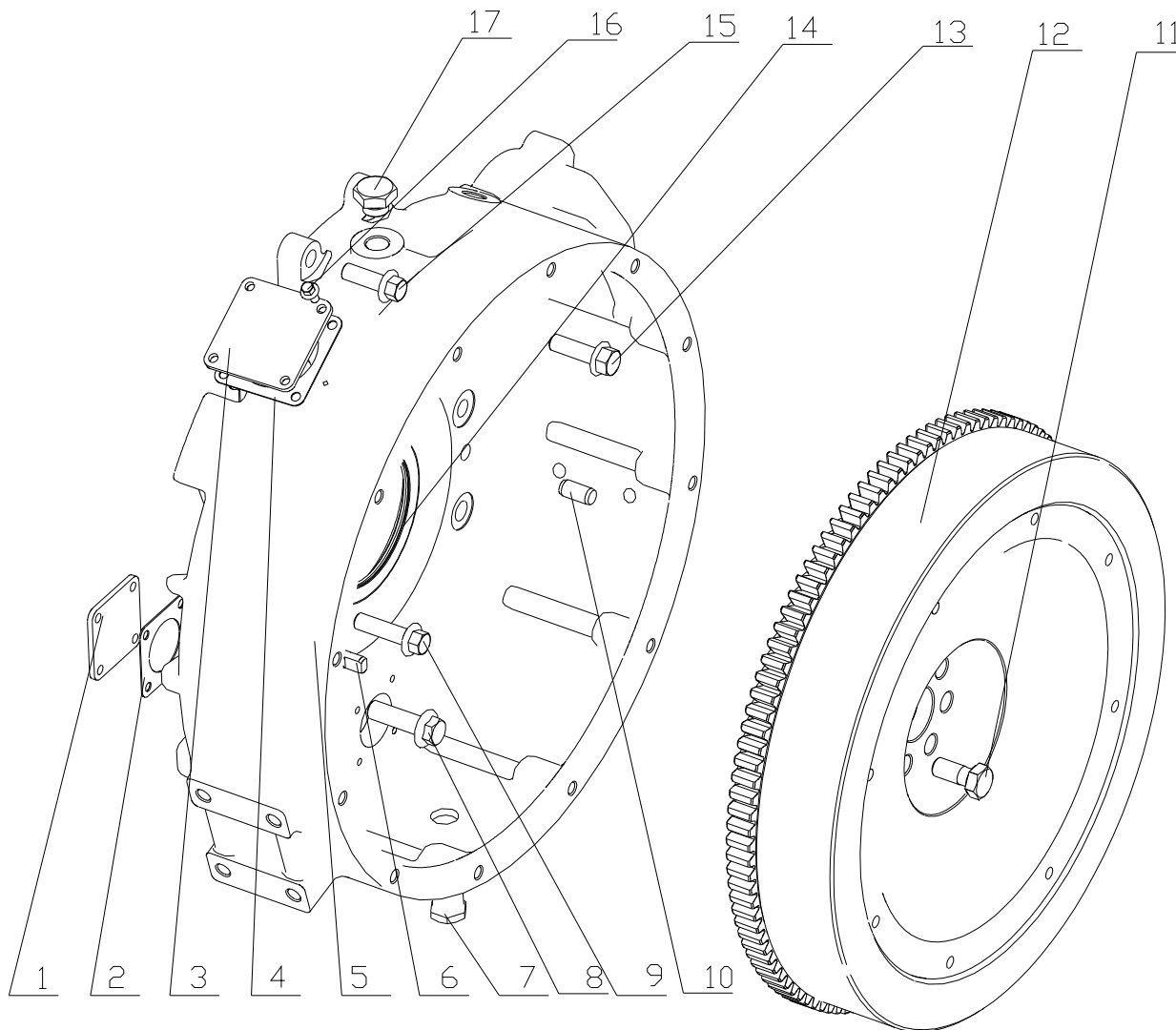
### 30、396-1308000/02 风扇总成 Fan Assembly

序号 No.	图 号 Part No.	名 称	Part Name	数量 Qty.	备 注 Remark
1	396-1308010A	风扇	Fan	1	
2	Q1841060TF2	螺栓 M10×60	Bolt M10×60	4	
3	415-1308001	水泵-风扇垫块	Cushion block	1	

EWP=Easy wear part (易损件)

图 Drawing

### 31. B7648-1600000/04 动力输出总成 Power Output Assembly

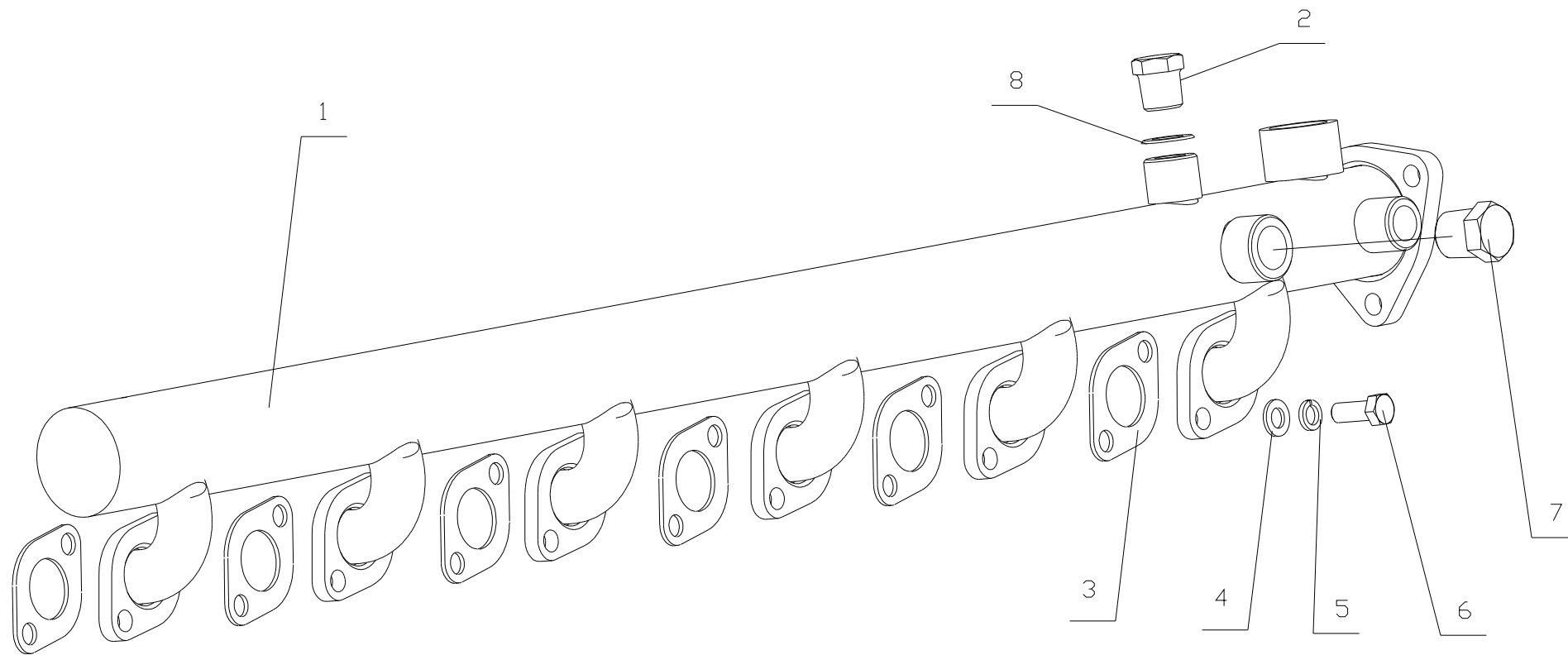


### 31. B7648-1600000/04 动力输出总成 Power Output Assembly

序号 No.	图号 Part No.	名称	Description	数量 Qty.	备注 Remark
1	B7638-1600402	堵盖	Plug cap	1	
2	B7638-1600408	垫片	Gasket	1	
3	B7648-1600402	盖板	Cover board	1	
4	B7648-1600408	垫片	Gasket	1	
5	331-1600401A	飞轮壳	Flywheel case	1	
6	6105Q-1600011	扁销	Flat pin	1	
7	Q618B04	螺塞 NPT1/2	Screw plug	1	
8	Q1841445TF2	螺栓 M14X45	Bolt	2	
9	Q1841245TF2	螺栓 M12X45	Bolt	5	
10	YC24-B1226	圆柱销 12X26	Straight pin	1	
11	330-1005044	飞轮螺栓	Flywheel bolt	7	
12	620-1005360C	飞轮及齿圈组件	Flywheel & gear ring parts	1	
13	Q1841240TF2	螺栓 M12X40	Bolt	1	
14	YC209-B100125PL	油封 100X125	Oil seal	1	选装 Optional
	YC209-C100125PL	油封 100X125	Oil seal	1	选装 Optional
	YC209-100125FL	油封 100X125	Oil seal	1	选装 Optional
15	Q1841235TF2	螺栓 M12X35	Bolt	2	
16	Q1840612	螺栓 M6X12	Bolt	8	
17	Q/YC198-18	螺塞 M18X1.5	Plug	2	

EWP=Easy Wear Part

### 32. J8004-1303000/04 散热器水管及软管总成 Water Pipe & Hose Assembly of Radiator



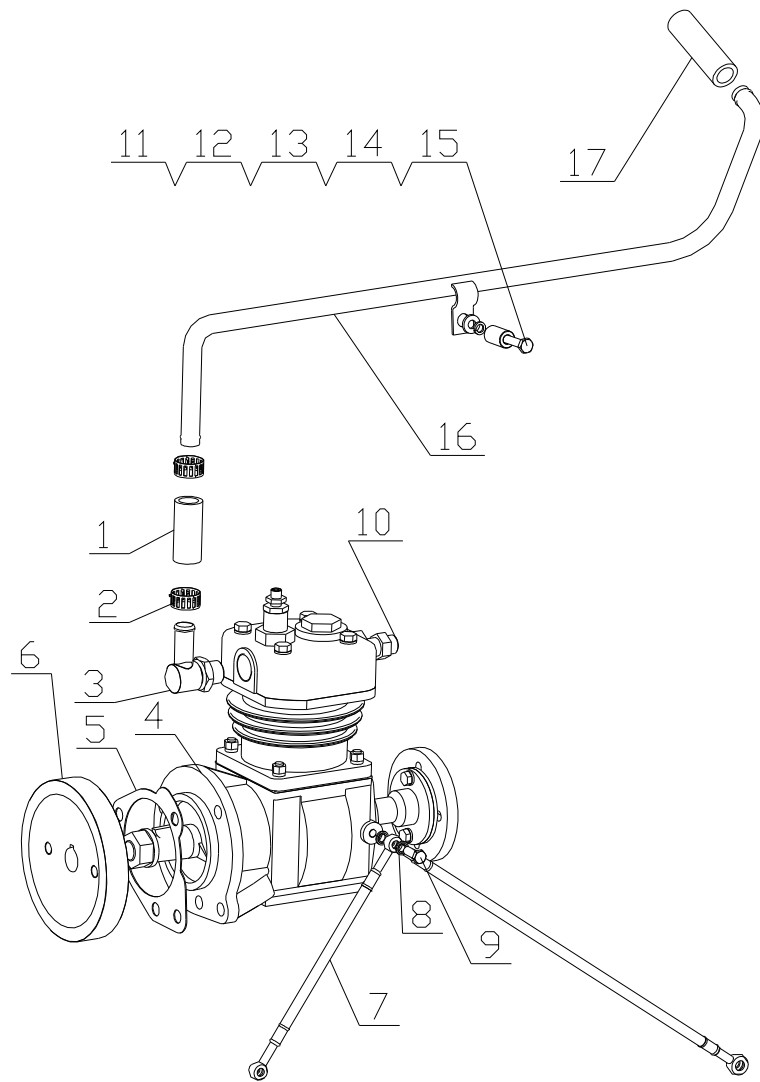
## 32. J8004-1303000/04 散热器水管及软管总成 Water Pipe& Hose Assembly of Radiator

序号 No.	图号 Part No.	名 称	Part Name	数量 Qty.	备注 Remark
1	A3006-1303020A	出水管组件	Water outlet assembly	1	
2	Q/YC198-14	螺塞 M14X1.5	Screw plug	1	
3	6105Q-1303015	出水支管垫片	Water outlet manifold gasket	6	易损件 EWP
4	Q40008	垫圈 8	Lock Washer 8	12	
5	Q40308	垫圈 8	Lock Washer 8	12	
6	Q/YC1820820	螺栓 M8X20	Bolt M8X20	12	
7	Q618B03	螺塞 NPT 3/8	Screw plug NPT3/8	3	
8	Q/YC149-14	复合式密封垫圈 14	Compound seal washer	1	

EWP=Easy wear part (易损件)

图 Drawing

33. J8000—3509000/11 气制动空气压缩机总成 Pneumatic Air Compressor Assembly



### 33. J8000—3509000/11 气制动空气压缩机总成 Pneumatic Air Compressor Assembly

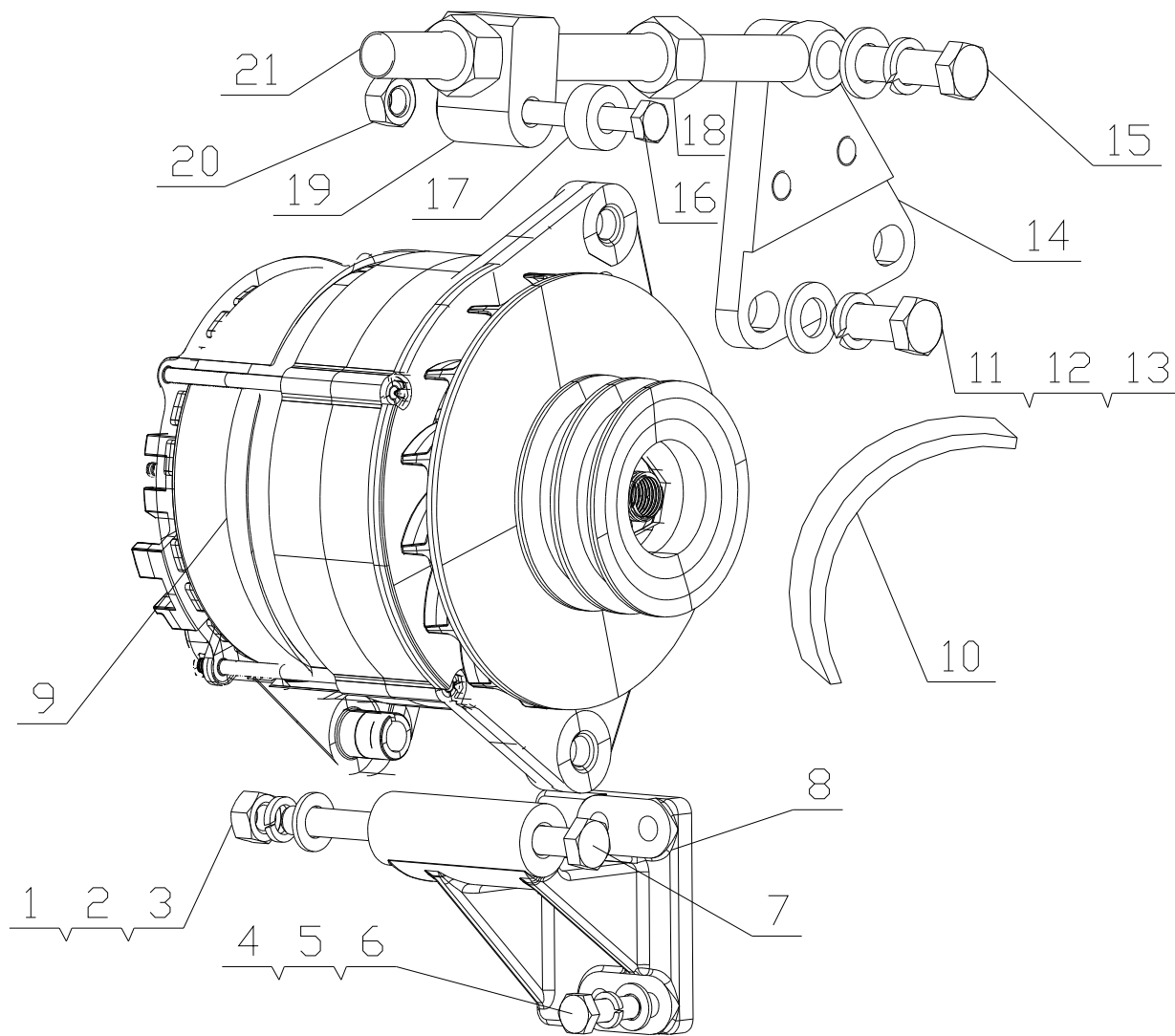
序号 No.	图号 Part No.	名 称	Description	数量 Qty.	备注 Remark
1	430D-1118052	夹布橡胶管	Fabric inserted rubber pipe	1	
2	Q67627	环箍 27	Loop hoop	2	
3	630-3509030	进气管接头组件	Intake pipe joint subassembly	1	
4	630-3509100A	空气压缩机	Air compressor	1	
5	630-1002041A	空压机垫片	Air compressor gasket	1	
6	6105Q-3509011	喷油泵传动齿轮	Injection pump driving gear	1	
7	330-3509020D	气泵油泵机油管组件	Air pump oil pump oil pipe subassembly	1	
8	Q/YC149-8	复合式密封垫圈 8	Compound seal washer 8	4	
9	6105Q-1007073	管接螺栓	Hinge bolt	2	
10	641-3509001	气泵出气口接头	Air pump exhaust port joint	1	
11	D0305-3509042	管夹	Pipe clamp	4	
12	6105Q-3509013	垫圈	Washer	1	
13	Q40308	垫圈 8	Washer 8	1	
14	J45D1-1008226	螺栓套	Bolt sleeve	1	
15	Q150B0850	螺栓 M8X50	Bolt	1	
16	J8000-3509011	空压机进气管	Air compressor intake pipe	1	
17	J8000-3509044	胶管	Rubber pipe	1	

EWP=Easy wear part (易损件)



图 Drawing

32、J8004-3701000/02 发电机总成 Alternator Assembly



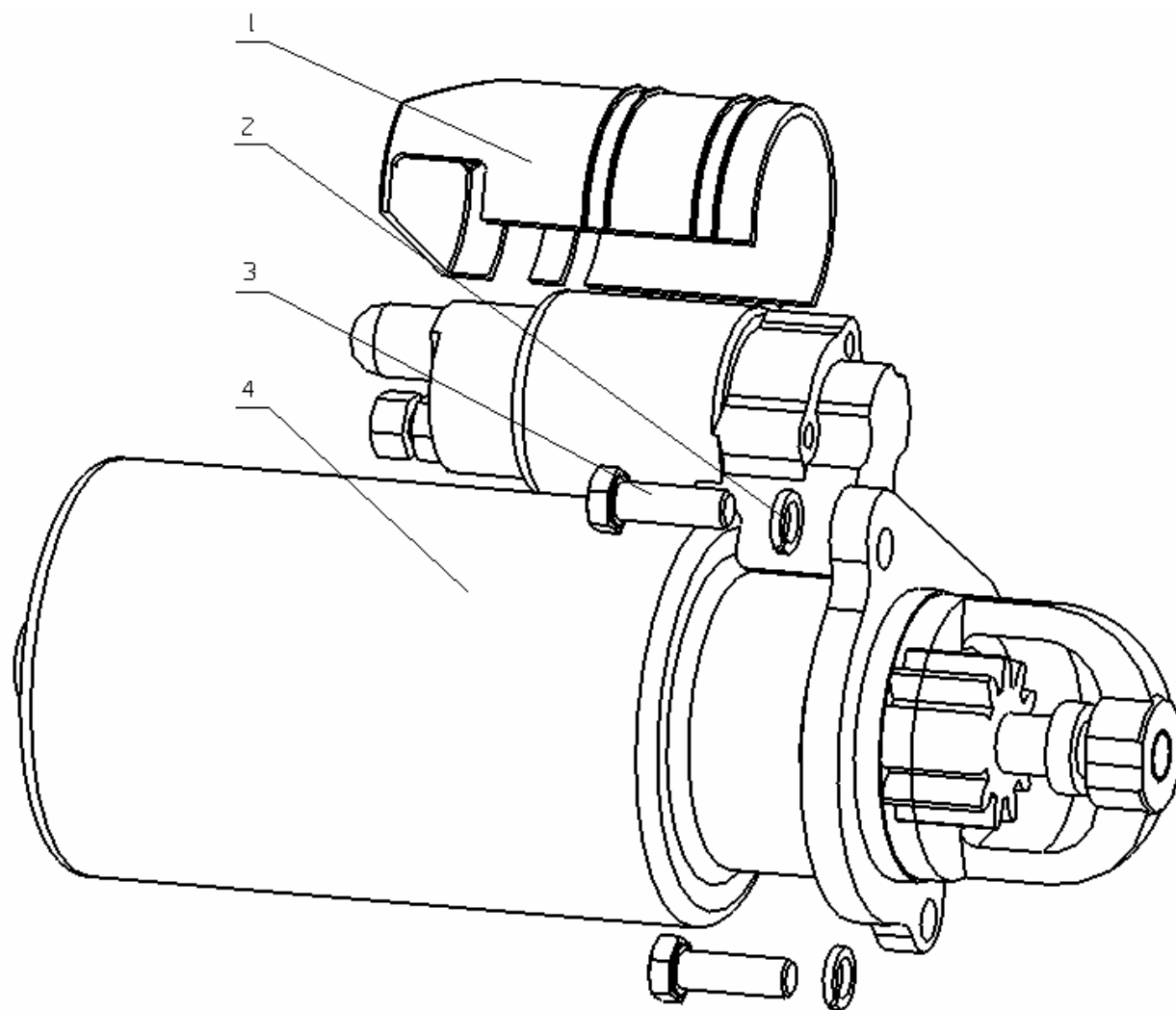
### 32、J8004-3701000/02 发电机总成 Alternator Assembly

序号 NO.	图号 Part No.	名 称	Part Name	数量 Qty	备注 Remark
1	Q340B10	螺母 10	Nut	1	
2	Q40310	垫圈 10	Washer 10	1	
3	Q40110	垫圈 10	Washer 10	1	
4	Q150B0825TF2	螺栓 M8X25	Bolt	4	
5	Q40308	垫圈 8	Nut 8	4	
6	Q40108	垫圈 8	Nut 8	4	
7	Q150B10130	螺栓 M10X130	Bolt	1	
8	B3000-3701020C	发电机支架	Alternator bracket	1	
9	J3601-3701100A	发电机	Alternator	1	
10	B4400-1307042	皮带	Belt	2	
11	Q150B1230TF2	螺栓 M12X30	Bolt	2	
12	Q40312	垫圈 12	Washer 12	3	
13	Q40112	垫圈 12	Washer 12	3	
14	D0110-3701033A	固定板	Lock plate	1	
15	Q150B1240TF2	螺栓 M12X40	Bolt	1	
16	Q150B0875TF2	螺栓 M8X75	Bolt	1	
17	340-1013006	垫圈	Washer	1	
18	Q340B16	螺母 M16	Nut	2	
19	1531B-3701032	滑块	Sliding block	1	
20	Q340B08	螺母 M8	Nut M8	1	
21	B3010-3701031	调节螺栓	Adjusting bolt	1	

EWP=Easy wear part (易损件)

图 Drawing

35. B7641-3708000/02 起动机总成 Starter Assembly



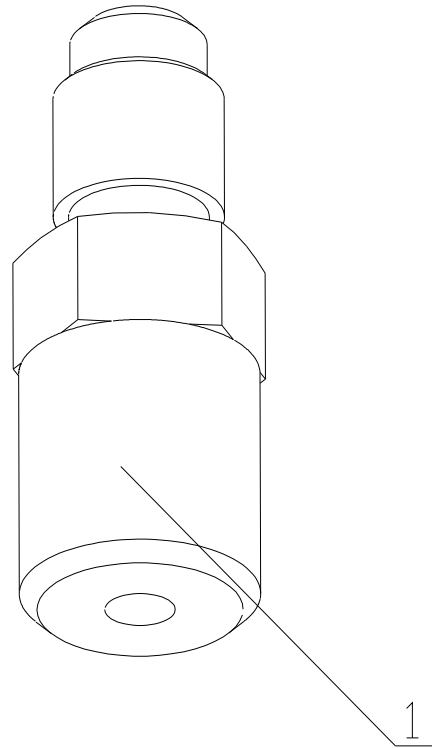
### 35. B7641-3708000/02 起动机总成 Starter Assembly

序号 Item	图 号 Part No.	名 称	Part Name	数量 Qty.	备注 Remark
1	A3206-3708104A	起动机防护罩	Starter protecting cover	1	
2	Q40312	垫圈 12	Lock Washer 12	3	
3	Q150B1235	螺栓 M12X35	Bolt	3	
4	B7617-3708100	起动机	Starter	1	
	G5800-3708E-01-443	单向器	Isolator	1	
	G5800-3708E-02-443	磁吸开关组件	Magnetic switch subassembly	1	
	G5800-3708E-03-443	继电器	Relay	1	
5	D30-1049337	尼龙扎带VI	Nylon fasten belt	2	

EWP=Easy wear part (易损件)

图 Drawing

36. B7648-380000/01 仪表、感应器总成 Instrument & Sensors Assembly



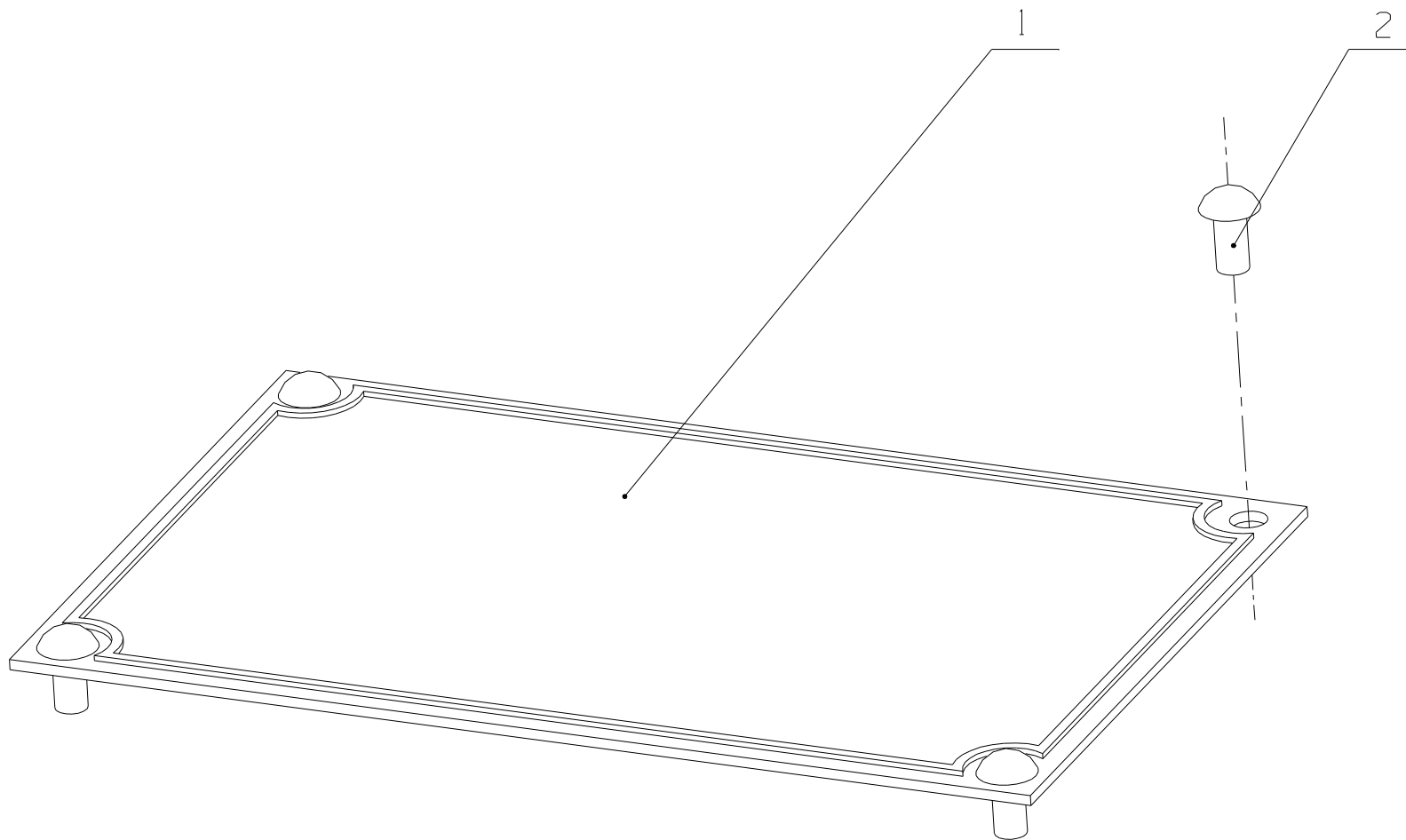
### 36. B7648-3800000/01 仪表、感应器总成 Instrument & Sensors Assembly

序号 No.	图号 Part No.	名称	Part Name	数量 Qty.	备注 Remarks
1	312-1002002	油压表接头	Oil pressure coupling	1	

EWP=Easy wear part (易损件)

图 Drawing

37. A8C02-3904000/01 铭牌 Nameplate



### 37. A8C02-3904000/01 铭牌 Nameplate

序号 No.	图 号 Part No.	名 称	Part Name	数量 Qty.	备 注 Remarks
1	Q/YC394-2	标牌	Nameplate	1	
2	YC5-0306	铆钉 3X6	Rivet 3×6	4	

EWP=Easy wear part (易损件)