

**SC8DK SERIES BASIC-MODEL
ELECTRICALLY-CONTROL DIESEL ENGINE
PARTS LIST**

Shanghai Diesel Engine Co., Ltd.

Feb, 2008

Table of contents No1

Part Assemblies designated for SC8DK type diesel engine

Part Ass'y No	Assembly Designation	Page	Part Ass'y No	Assembly Designation	Page
1. SC8DK230Q3 Engine Order Number: DBK0812					
D02A-000-800	Engine Block assembly	1	D22-000-39	Thermostat assembly	57
D02B-000-800	Gear chamber assembly	7	D24A-000-800	Water tube & water strainer assembly	59
D02C-000-800	Flywheel housing assembly	10	D24B-000-801	Assorted Water pipeline assembly	62
D02H-000-800	Rail assembly	13	D26C-000-801a	Fuel oil pipeline assembly	64
D03-000-34	Oil sump assembly	15	D28-000-801	Fuel oil injector assembly	68
D04-000-800a	Cylinder head assembly	17	D28C-000-801	Injection pump assembly	70
D05-000-800	Piston connecting-rod assembly	23	D33-000-187	Diesel engine supporting assembly	72
D06A-000-37	Crankshaft vibration damper assembly	25	D638-000-802a	Fuel oil filter assembly	74
D06B-000-800	Flywheel Assembly	27	D42-000-30a	Gas-oil separator assembly	76
D07-000-800	Drive gear assembly	29	D47-000-10	Air compressor assembly	78
D09-000-30c	Camshaft assembly	31	D49-000-801	Supplied tool kit assembly	80
D11-000-77	Starting system assembly (without fig.)	33	D88A-000-805	Control unit assembly	82
D12-000-804	Intake pipe assembly	34	LQT-000AZ	Pre-heater assembly	84
D13-000-30a	Exhaust pipe assembly	38	D00-000-805	Engine Application	86
D15-000-31	Oil pump assembly	42			
D16A-000-132	Front-end drive assembly	44			
D16L-000-07	Fan assembly	46			
D17-002-02	Oil Filter assembly	48	D38-000-14	Turbocharger	
D18-000-130	Oil cooler assembly	50			
D19-000-40	Oil pipeline assembly	52			
D20-000-30	Water pump assembly	55			

Part Ass’y No Assembly Designation Page
2. SC8DK260Q3 Engine Order Number: DBK0813

D02A-000-800	Engine Block Assembly.....	1
D02B-000-800	Gear chamber assembly.....	7
D02C-000-800	Flywheel housing Assembly.....	10
D02H-000-800	Rail assembly.....	13
D03-000-34	Oil sump assembly.....	15
D04-000-800a	Cylinder head Assembly.....	17
D05-000-800	Piston connecting-rod Assembly.....	23
D06A-000-37	Crankshaft vibration damper assembly.....	25
D06B-000-800	Flywheel Assembly	27
D07-000-800	Drive gear assembly.....	29
D09-000-30c	Camshaft assembly	31
D11-000-77	Starting system assembly (without fig.)	33
D12-000-805	Intake pipe assembly.....	34
D13-000-94	Exhaust pipe assembly.....	38
D15-000-31	Oil pump assembly.....	42
D16A-000-132	Front-end drive assembly.....	44
D16L-000-07	Fan assembly.....	46
D17-002-02	Oil Filter assembly	48
D18-000-130	Oil cooler assembly	50
D19-000-40	Oil pipeline assembly.....	52
D20-000-30	Water pump assembly	55

Part Ass’y No Assembly Designation Page		
D22-000-39	Thermostat assembly.....	57
D24A-000-800	Water tube & water strainer assembly.....	59
D24B-000-801	Assorted Water pipeline assembly.....	62
D26C-000-801a	Fuel oil pipeline assembly.....	64
D28-000-801	Fuel oil injector assembly.....	68
D28C-000-801	Injection pump assembly.....	70
D33-000-187	Diesel engine supporting assembly.....	72
D638-000-802a	Fuel oil filter assembly.....	74
D42-000-30a	Gas-oil separator assembly.....	76
D47-000-10	Air compressor assembly	78
D49-000-801	Supplied tool kit assembly.....	80
D88A-000-805	Control unit assembly.....	82
LQT-000AZ	Pre-heater assembly	84
D00-000-807	Engine Application	86

D38-000-183 Turbocharger

Part Ass’y No Assembly Designation Page
3. SC8DK280Q3 Engine Order Number: DBK0811

D02A-000-800	Engine Block Assembly.....	1
D02B-000-800	Gear chamber assembly.....	7
D02C-000-800	Flywheel housing Assembly.....	10
D02H-000-800	Rail assembly.....	13
D03-000-30a	Oil sump assembly.....	15
D04-000-800a	Cylinder head Assembly.....	17
D05-000-800	Piston connecting-rod Assembly.....	23
D06A-000-37	Crankshaft vibration damper assembly.....	25
D06B-000-800	Flywheel Assembly	27
D07-000-800	Drive gear assembly.....	29
D09-000-30c	Camshaft assembly	31
D11-000-77	Starting system assembly (without fig.)	33
D12-000-805	Intake pipe assembly.....	34
D13-000-87	Exhaust pipe assembly.....	38
D15-000-31	Oil pump assembly.....	42
D16A-000-132	Front-end drive assembly.....	44
D16L-000-12	Fan assembly.....	46
D17-002-02	Oil Filter assembly	48
D18-000-130	Oil cooler assembly	50
D19-000-37	Oil pipeline assembly.....	52
D20-000-30	Water pump assembly	55

Part Ass’y No Assembly Designation Page		
D22-000-39	Thermostat assembly.....	57
D24A-000-800	Water tube & water strainer assembly.....	59
D24B-000-801	Assorted Water pipeline assembly.....	62
D26C-000-801a	Fuel oil pipeline assembly.....	64
D28-000-800	Fuel oil injector assembly.....	68
D28C-000-801	Injection pump assembly.....	70
D33-000-187	Diesel engine supporting assembly.....	72
D638-000-802a	Fuel oil filter assembly.....	74
D42-000-30a	Gas-oil separator assembly.....	76
D47-000-10	Air compressor assembly	78
D49-000-801	Supplied tool kit assembly.....	80
D55-000-800	Fan wind-guided cover assembly.....	85
D88A-000-805	Control unit assembly.....	82
LQT-000AZ	Pre-heater assembly	84
D00-000-801	Engine Application	86
D38-000-181	Turbocharger	

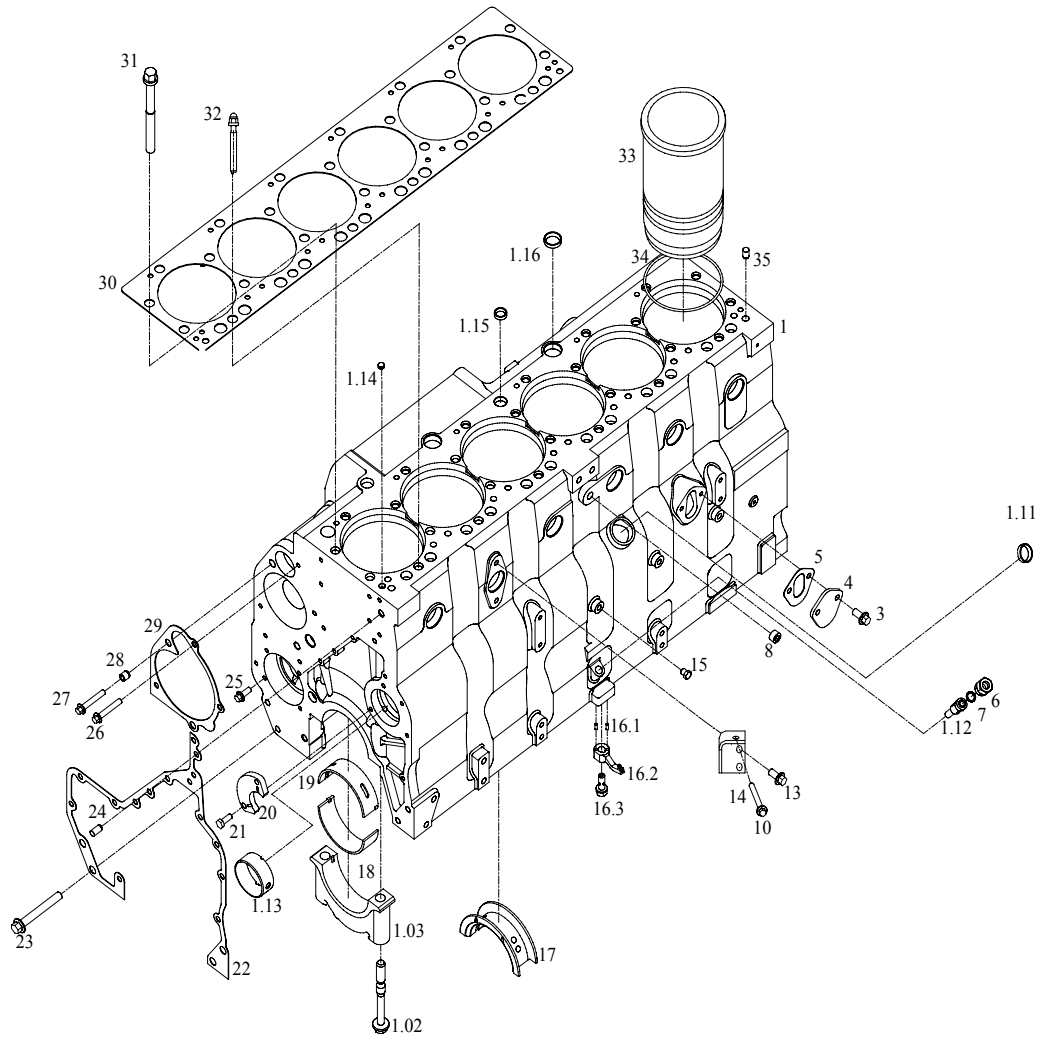


Fig.1 Cylinder Block I

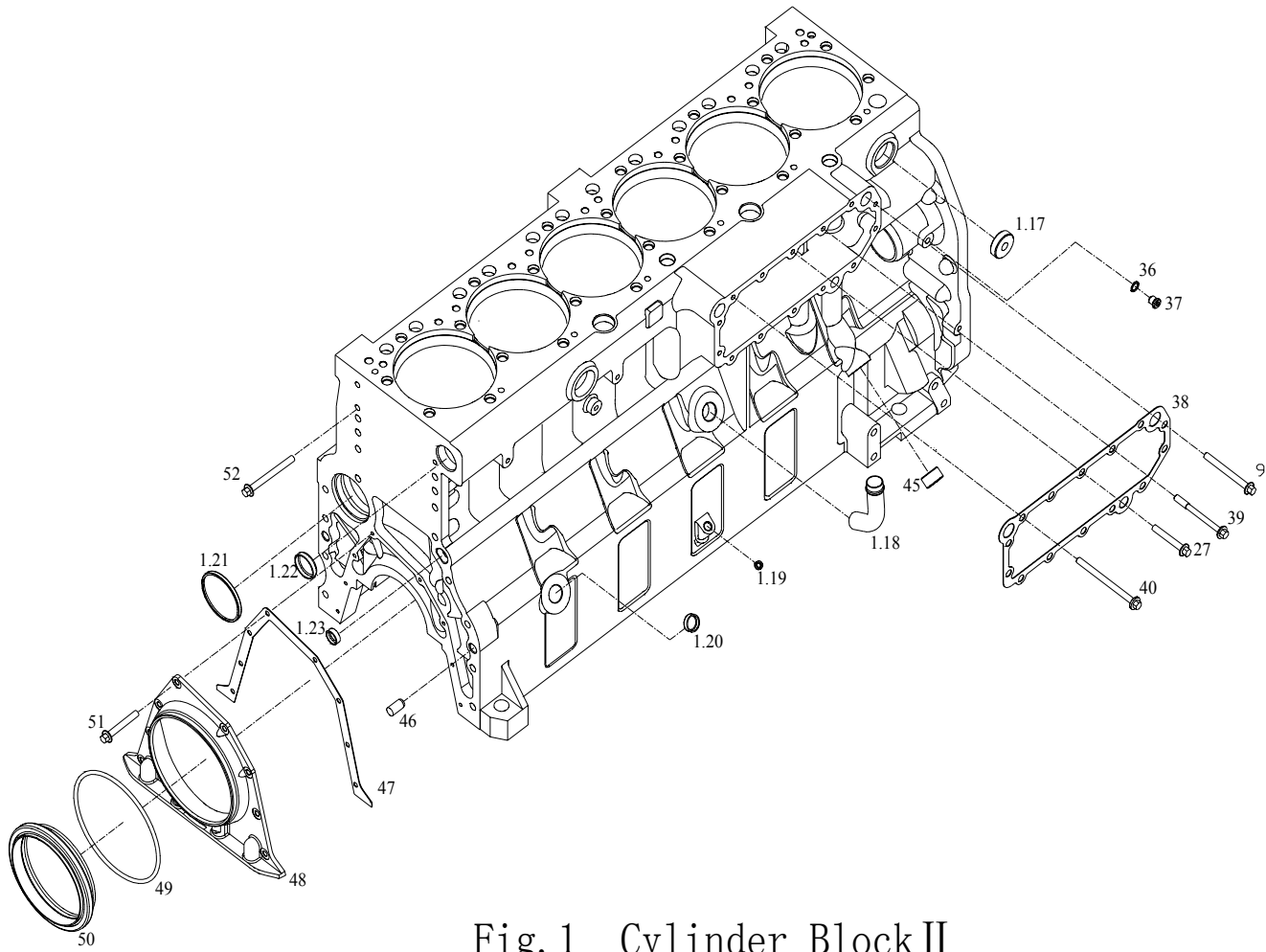


Fig.1 Cylinder Block II

Fig.1 Engine block assembly No. and applicable model

Ass'y Code	Engine block ass'y No.	Applicable model
①	D02A-000-800	DBK0812 DBK0813 DBK0811

Fig. 1 Parts and components for Engine block assembly

No.	Designation	Order No.	Ass'y Code					No.	Designation	Order No.	Ass'y Code				
			Qty per set								Qty per set				
			①	②	③	④	⑤				①	②	③	④	⑤
1	Assembly parts for engine block	D02A-001-800	1					1.19	Choke plug (φ10)	D02A-128-01	1				
1.0	Machining parts for engine block	D02A-002-800	1					1.20	Choke plug (φ22)	D02A-127-01	1				
1.01	Engine block	D02A-101-800	1					1.21	Choke plug for camshaft bearing seat hole (φ70)	D02A-162-01	1				
1.02	Main bearing cap bolt	D02A-106-30	14					1.22	Choke plug (φ20)	D02A-310-01	1				
1.03	Main bearing cap	D02A-105-31	6					1.23	Choke plug (φ35)	D04-167-01	8				
1.04	Main bearing cap	D02A-105-32	1					1.24	“O” rubber seal ring	D02A-329-01	1				
1.05	Main bearing cap retaining pin	D02A-322-01	1					3	Hex flange-face bolt	Q/SC622-M8×20	2				
1.11	Screw plug	D02A-313-800	1					4	Diesel hand pump cover plate	D02A-136-01	1				
1.12	Dipstick tube	D02A-142-01a	1					5	Sealing gasket for diesel hand-pump	D02A-135-01	1				
1.13	Camshaft bearing	D02A-113-01b	7					6	Union nut	D02A-179-01	1				
1.14	Choke plug for straight pin	D02A-309-01	1					7	Copper washer	Q/SC598-12×16	1				
1.15	Choke plug (φ20)	D02A-161-01	1					8	Hexagon socket head plug (Z3/8)	D04-309-01	1				
1.16	Choke plug (φ28) Screw plug (Z1/8)	D02A-161-31	2					9	Hex flange-face bolt	Q/SC622-M8×80	4				
		D04-166-01a	2												
		D02A-166-01a	1					10	Hex flange-face bolt	Q/SC622-M12×25	1				
1.17	Choke plug	D02A-308-01	1					13	Hex flange-face bolt	Q/SC622-M10×20	4				
1.18	Return oil pipe	D02A-139-03	1												

Fig. 1 Parts and components for Engine block assembly

No.	Designation	Order No.	Ass'y Code Qty per set					No.	Designation	Order No.	Ass'y Code Qty per set				
			①	②	③	④	⑤				①	②	③	④	⑤
14	Fixed bracket for oil pump	D02A-174-800	1					25	Hex flange-face bolt	Q/SC622-M8×35	4				
15	Screw plug (Z1/8)	D02A-166-01	3					26	Hex flange-face bolt	Q/SC622-M8×50	2				
16	Piston cooling nozzle ass'y	D02A-030-02	6					27	Hex flange-face bolt	Q/SC622-M8×55	7				
16.1	Straight pin	GB/T119-B4×8	12					28	Elastic and straight pin	GB/T879-12×12	3				
16.2	Piston cooling nozzle	D02A-137-31	6					29	Spacer	D02A-307-01	1				
16.3	Steel ball	GB/T308-4G100b	6					30	Cylinder head shim	D02A-109-31	1				
16.4	Pressure valve block	D02A-302-01a	6					31	Cylinder head long-bolt	D02A-107-30	20				
17	Crank thrust bearing (up)	D02A-111-03	1					32	Cylinder head short-bolt	D02A-108-800a	6				
	(down)	D02A-323-01c	1												
18	Main bearing lower shell	D02A-112-01	6					33	Cylinder jacket	D02A-104-800	6				
19	Main bearing upper shell	D02A-110-01a	6					34	Cylinder sleeve water seal ring	D02A-171-30a	18				
20	Camshaft thrust plate	D02A-114-01b	1					35	Straight pin	D02A-312-01	2				
21	Hexagon head bolt	GB/T5783-M8×20	2					36	Copper washer	Q/SC598-10×14	1				
22	Gear chamber shim	D02A-129-30a	1					37	Hex socket head screw plug	Q/SC584.2-M10×1	1				
23	Hex flange-face bolt	Q/SC622-M12×50	4					38	Oil cooler shim	D02A-133-30	1				
24	Straight pin	GB/T119-A10×20	2					39	Hex flange-face bolt	D02A-311-01	2				

Fig.1 Parts and components for Engine block assembly

No.	Designation	Order No.	Ass'y Code Qty per set					No.	Designation	Order No.	Ass'y Code Qty per set				
			①	②	③	④	⑤				①	②	③	④	⑤
40	Hex flange-face bolt (M8×105)	D02A-306-01a	4					49	“O” ring for rear cover plate	D02A-116-01	1				
45	Hex socket head bolt (Z3/4)	D02A-163-01	1					50	Oil seal for crankshaft rear-end	D02A-118-02b	1				
46	Straight pin	GB/T119-A12×24	2					51	Hex flange-face bolt	Q/SC622-M6×16	8				
47	Rear cover-plate shim	D02A-121-01a	1					52	Hex flange-face bolt	Q/SC622-M12×40	12				
48	Rear cover-plate	D02A-115-01	1												

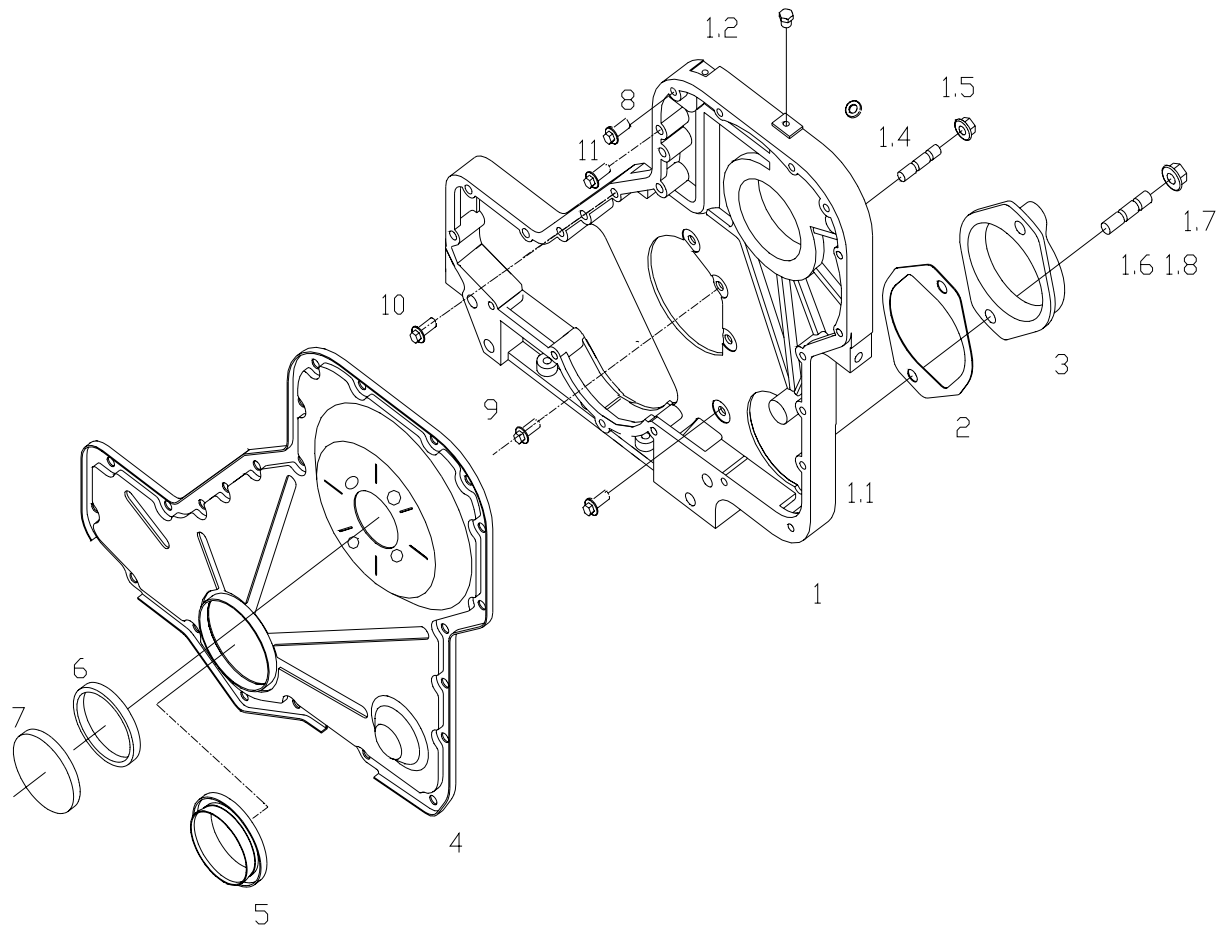


Fig.2 Gear Housing

Fig. 2 Gear chamber assembly No. and applicable model

Ass'y Code	Gear chamber ass'y No.	Applicable model
①	D02B-000-800	DBK0812 DBK0813 DBK0811

Fig.2 Parts and componets for gear chamber assembly

No.	Designation	Order No.	Ass'y Code					No.	Designation	Order No.	Ass'y Code				
			Qty per set								Qty per set				
			①	②	③	④	⑤				①	②	③	④	⑤
1	Assembly parts for gear chamber	D02B-001-800	1					3	PTO interface cover-plate	D02B-105-01	1				
1.1	Gear chamber	D02B-101-800	1					4	Gear chamber cover	D02B-102-31a	1				
1.2	Hex soocket head screw plug	D04-132-01	1					5	Oil seal for crankshaft front-end	D02B-104-02a	1				
1.4	Stud bolt	GB/T899-GM10-M10×35-8.8-Y	4					6	Blind-nut seal-ring	D02B-109-01	1				
1.5	Hex flange-face nut	GB/T6177-M10-Y	4					7	Gear chamber cover blind-nut	D02B-108-01b	1				
1.6	Stud bolt	GB/T899-GM12-M12×30-8.8-Y	2					8	Hex flange-face bolt	D02B-300-01	15				
1.7	Hex flange-face nut	GB/T6177-M12-Y	2					9	Hex flange-face bolt	Q/SC622-M8×20	4				
1.8	Stud bolt	GB/T899-GM12-M12×40-8.8-Y	2					10	Hex flange-face bolt	Q/SC622-M8×45	1				
2	PTO interface shim	D02B-106-01a	1					11	Hex flange-face bolt	Q/SC622-M8×50	7				

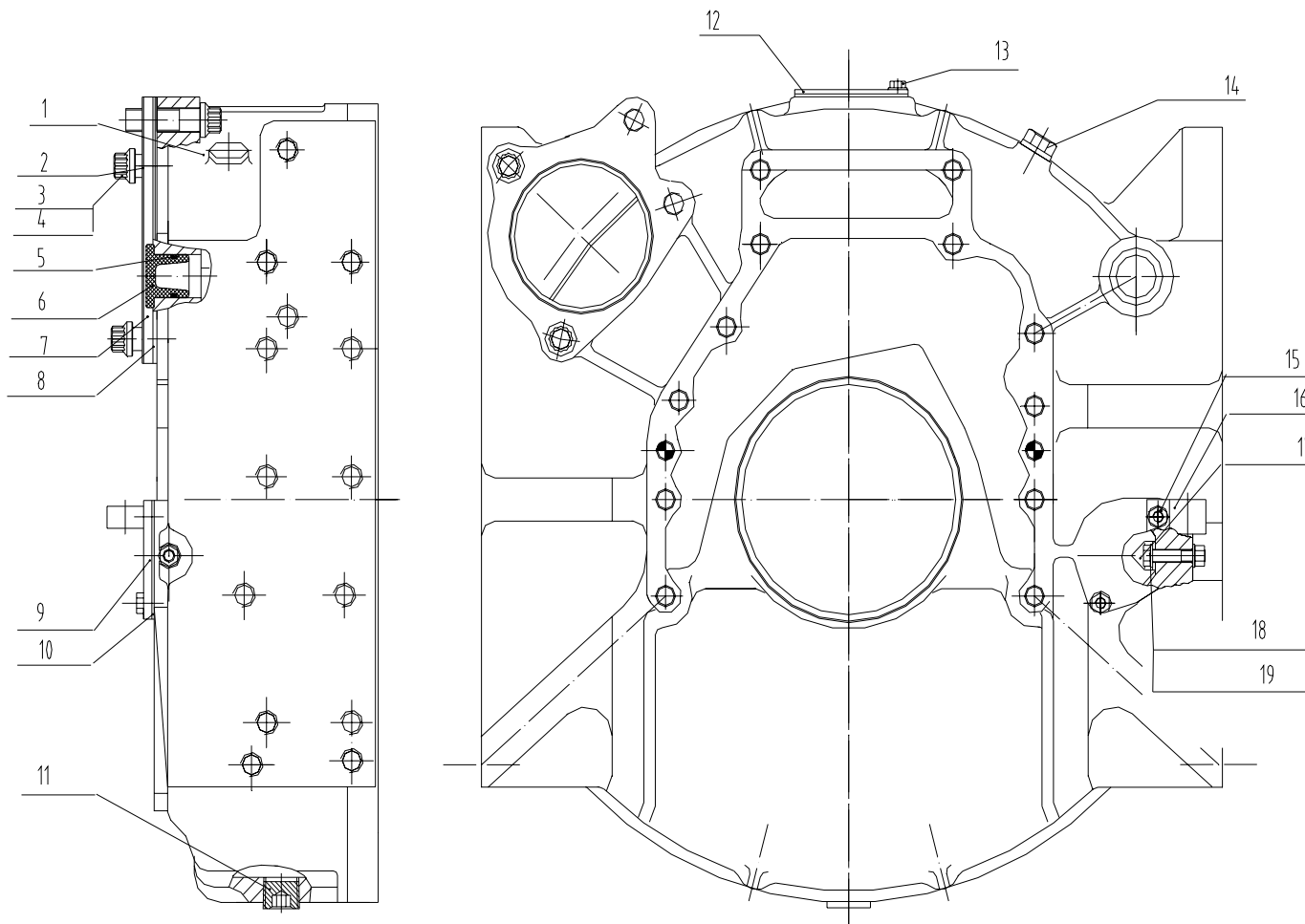


Fig.3 Flywheel Housing

Fig.3 Flywheel housing assembly and applicable model

Ass'y Code	Flywheel housing ass'y No.	Applicable model
①	D02C-000-800	DBK0812 DBK0813 DBK0811

Fig.3 Parts and componets for Flywheel housing assembly

No.	Designation	Order No.	Ass'y Code					No.	Designation	Order No.	Ass'y Code				
			Qty per set								Qty per set				
			①	②	③	④	⑤				①	②	③	④	⑤
1	Flywheel housing	D02C-101-800	1					11	Hex socket head screw plug (Z3/4)	D02A-163-01	1				
2	Starting motor shim	D02C-108-02	1					12	Cover-plate for flywheel case opening	D02C-149-03	1				
3	Dodecagon head bolt	D02C-110-01	3					13	Hex flange-face bolt	Q/SC622-AM6×12	4				
4	Flat washer	GB/T97.2-16-200HV-Y	3					14	Hexagon socket head plug	Q/SC587.1-M18×1.5	2				
5	“O” rubber seal ring	GB3452.1-23.6×3.55	1					15	Hex flange-face bolt	Q/SC622-M8×16	2				
6	Turing gear male plug	D02C-106-01	1					16	Clamping collar	D02C-107-01	1				
7	Link-flange for starting motor	D02C-102-03	1					17	Pointer	D02C-103-01	1				
8	Spacer	D02C-109-02	1					18	Hex flange-face bolt	Q/SC622-M8×45	1				
9	Cover-plate	D02C-104-01	1					19	Hex flange-face nut	GB/T6177-M8-Y	1				
10	Cover-plate shim	D02C-105-01	1												

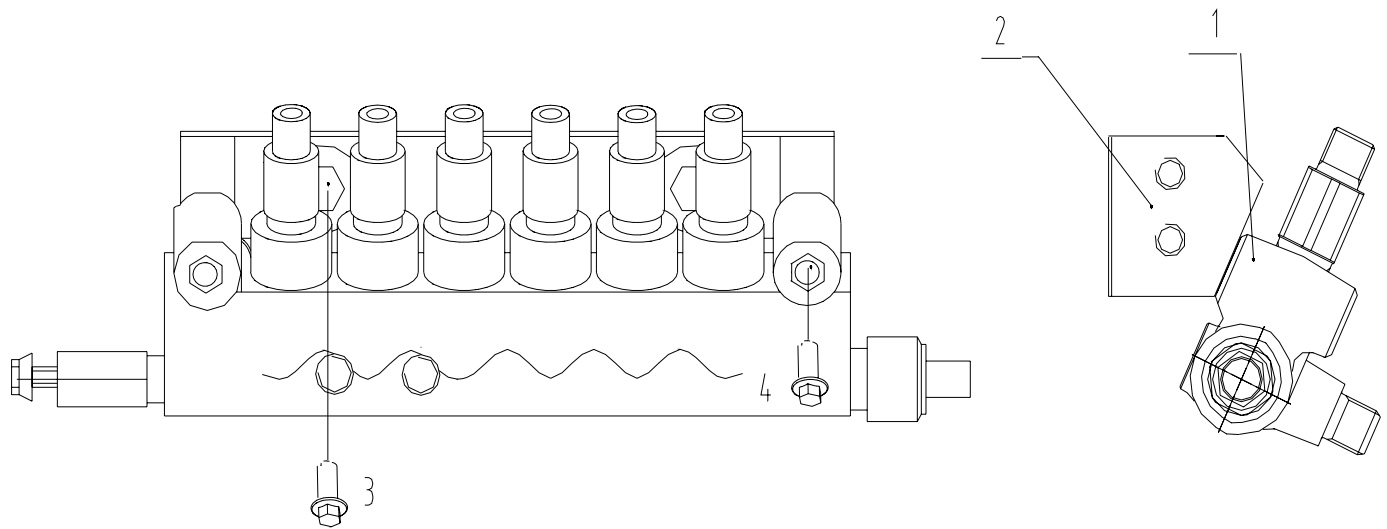


Fig.4 Rail

Fig. 4 High-voltage rail assembly No. and applicable model

Ass'y Code	High-voltage rail ass'y No.	Applicable model
①	D02H-000-800	DBK0812 DBK0813 DBK0811

Fig. 4 Parts and componets for High-voltage rail assembly

No.	Designation	Order No.	Ass'y Code Qty per set					No.	Designation	Order No.	Ass'y Code Qty per set					
			①	②	③	④	⑤				①	②	③	④	⑤	
1	Rail part	D02H-001-800	1					3	Hex flange-face bolt	Q/SC622-M12×25	2					
2	Rail bracket	D02H-101-800	1					4	Hex flange-face bolt	Q/SC622-M8×55	2					

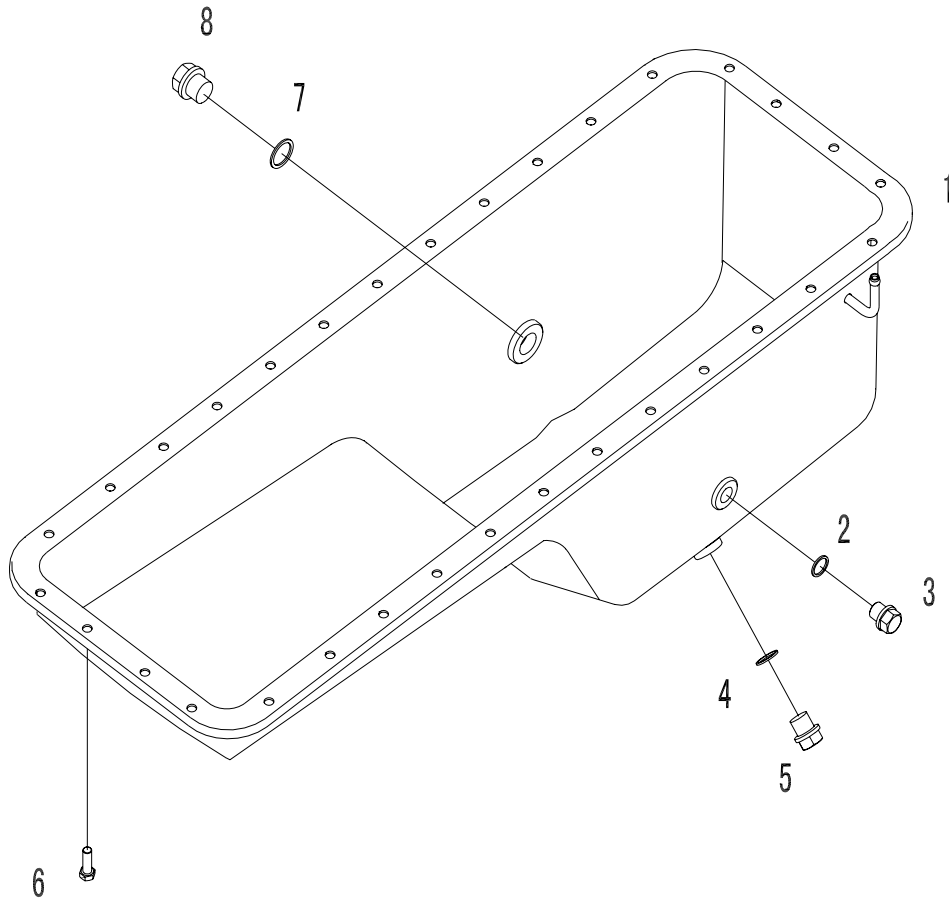


Fig.5 Oil Pan

Fig.5 Oil sump assembly No. and applicable model

Ass'y Code	Oil sump ass'y No.	Applicable model
①	D03-000-34	DBK0812 DBK0813
②	D03-000-30a	DBK0811

Fig.5 Parts and componets for Oil sump assembly

No.	Designation	Order No.	Ass'y Code Qty per set					No.	Designation	Order No.	Ass'y Code Qty per set				
			①	②	③	④	⑤				①	②	③	④	⑤
1	Welded part for oil sump	D03-001-32a	1					5	Hexagon head screw plug	Q/SC587.1-M18×1.5	1	1			
		D03-001-30b		1				6	Hex flange-face bolt	Q/SC622-M8×16	32	32			
2	Composite hard seal gasket	D03-110-01	1	1				7	Composite hard seal gasket	D03-110-03	1	1			
3	Hexagon head screw plug	Q/SC587.1-M16×1.5	1	1				8	Hexagon head screw plug	Q/SC587.1-M22×1.5	1	1			
4	Composite hard seal gasket	D03-110-02	1	1											

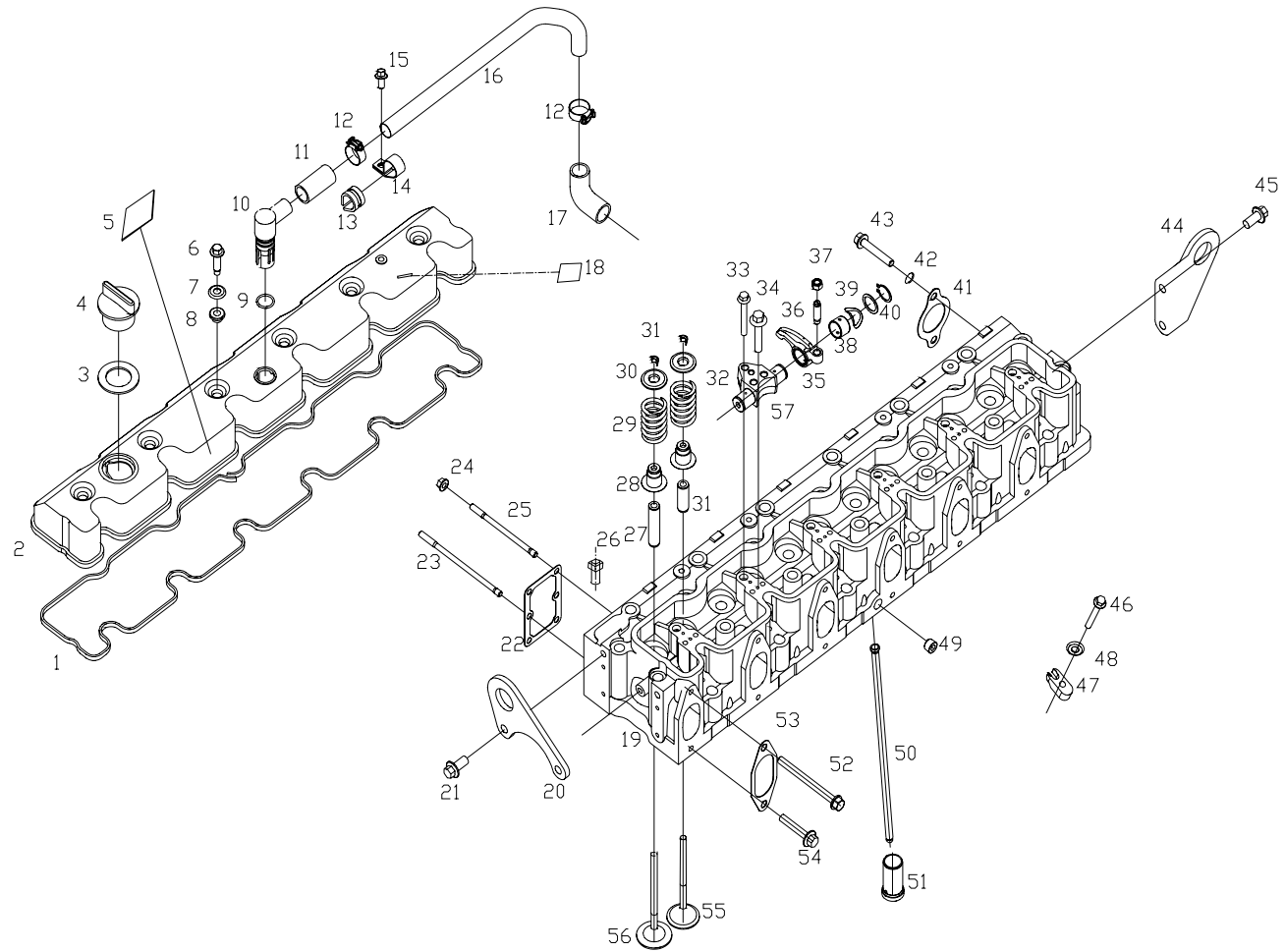


Fig.6 Cylinder Head I

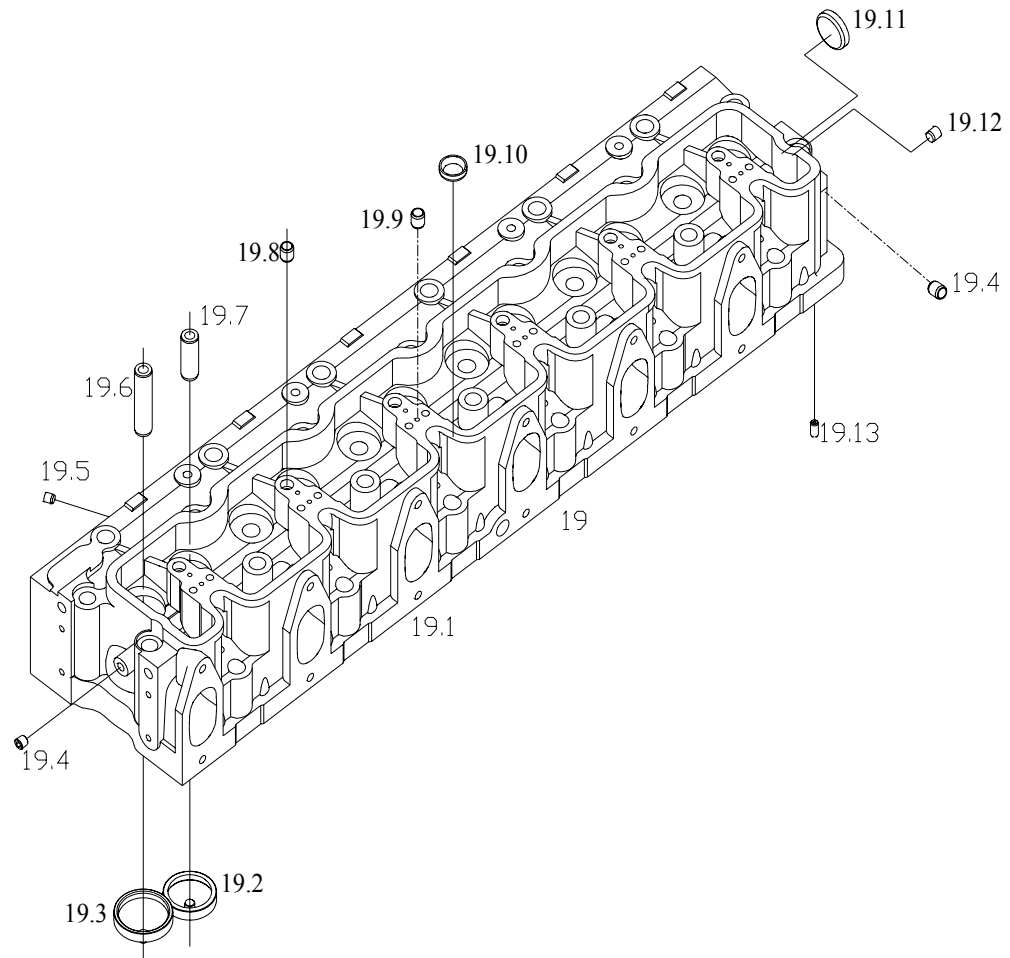


Fig. 6 Cylinder Head II

Fig. 6 Cylinder head assembly No. and applicable model

Ass'y Code	Cylinder head ass'y No.	Applicable model
①	D04-000-800a	DBK0812 DBK0813 DBK0811

Fig. 6 Parts and componets for Cylinder head assembly

No.	Designation	Order No.	Ass'y Code					No.	Designation	Order No.	Ass'y Code				
			Qty per set								Qty per set				
			①	②	③	④	⑤				①	②	③	④	⑤
1	Cylinder head case seal band	D04-135-30a	1					17	Rubber bend pipe	D04-312-01a	1				
2	Cylinder head case	D04-134-30a	1					18	Indicating plate	D04-319-02	1				
3	Filling cap seal shim	D04-139-01	1					19	Cylinder head fittings	D04-001-800	1				
4	Filling cap	D04-138-01	1					19.1	Cylinder head	D04-101-800	1				
5	Indication plate for fuel injector	D04-303-800	5					19.2	Exhaust valve seat	D04-103-30	6				
6	Cylinder head case bolt	D04-136-30a	6					19.3	Intake valve seat	D04-102-30	6				
7	Gasket for case bolt seal ring	D04-301-01	6					19.4	Hex socket head screw plug	D04-132-01	2				
8	Case bolt seal ring	D04-300-01a	6					19.5	Choke plug	D04-317-01	6				
9	“O” rubber seal ring	D04-318-01	2					19.6	Intake valve guide	D04-104-30a	6				
10	Vent connector	D04-140-30	1					19.7	Exhaust valve guide	D04-310-01a	6				
11	Rubber hose	D04-314-01b	1					19.8	Retaining pin	D04-311-01a	6				
12	Clamping collar	Q/SC582-27~33	4					19.9	Straight pin	GB/T119-A4×8	6				
13	clamping collar jacket	D04-315-01	1					19.10	Choke plug(Φ25)	D04-308-01	5				
14	Clamping collar	D04-313-01	1					19.11	Choke plug (Φ35)	D04-167-01a	6				
15	Hex flange-face bolt	D02B-300-01	1					19.12	Choke plug	D04-316-01	1				
16	Vent pipe	D04-146-30	1					19.13	Orifice plug	D04-161-01	1				

Fig. 6 Parts and componets for Cylinder head assembly

No.	Designation	Order No.	Ass'y Code					No.	Designation	Order No.	Ass'y Code				
			Qty per set								Qty per set				
			①	②	③	④	⑤				①	②	③	④	⑤
20	Front lifting eye	D04-142-30c	1					33	Rocker shaft fastening bolt	D04-120-30	6				
21	Hex flange-face bolt	Q/SC622-M12×25	2					34	Hex flange-face bolt	Q/SC622-M8×45-10.9	12				
22	Thermostat shim	D04-304-01	1					35	Rocker arm fitting	D04-002-30a	12				
23	Thermostat stud bolt	D04-306-01	4					35.1	Rocker arm	D04-122-30a	12				
24	Hex flange-face nut	GB/T6177-M8-Y	12					35.2	Rocker bearing	D04-303-01a	12				
25	Thermostat stud bolt	D04-305-01	2					36	Rocker-arm regulating screw	D04-123-31	12				
26	Hex flange-face bolt	Q/SC622-M8×16	1					37	Small hex head nut	D04-162-01	12				
27	Oil seal for intake valve stem	D04-321-30	6					38	Corrugated elastic gasket	D04-129-01	12				
28	Valve spring	D04-113-30a	12					39	Rocker-arm thrust plate	D04-124-01	12				
29	Valve spring upper seat	D04-114-30b	12					40	Shaft retaining ring	GB894.1-22	12				
30	Valve locker	D04-115-30a	24					41	Exhaust pipe gasket	D04-144-30	6				
31	Oil seal for exhaust valve stem	D04-321-30	6					42	Lock washer	D04-320-01	12				
32	Rocker shaft fitting	D04-005-30a	6					43	Exhaust pipe bolt	D04-145-30a	12				
32.1	Rocker-arm shaft	D04-116-30a	6					44	Rear lifting eye	D04-143-30c	1				
32.2	Choke plug (Φ6)	D04-117-01	12					45	Hex flange-face bolt	Q/SC622-M12×25	4				

Fig. 6 Parts and componets for Cylinder head assembly

No.	Designation	Order No.	Ass'y Code					No.	Designation	Order No.	Ass'y Code				
			Qty per set								Qty per set				
			①	②	③	④	⑤				①	②	③	④	⑤
46	Oil injector fastening bolt	D04-148-800	6					52	Intake pipe bolt	D04-307-01a	6				
47	Press plate for oil injector	D04-147-801a	6					53	Intake pipe gasket	D04-131-30	6				
48	Ball-face washer	GB/T849-8	6					54	Hex flange-face bolt	Q/SC622-M10×55	6				
49	Hex socket headscrew plug (Z3/8)	D04-309-01	2					55	Exhaust valve	D04-111-30	6				
50	Push rod	D04-128-30a	12					56	Intake valve	D04-110-30a	6				
51	Tappet	D04-127-30c	12					57	Rocker arm ass'y	D04-007-30	6				

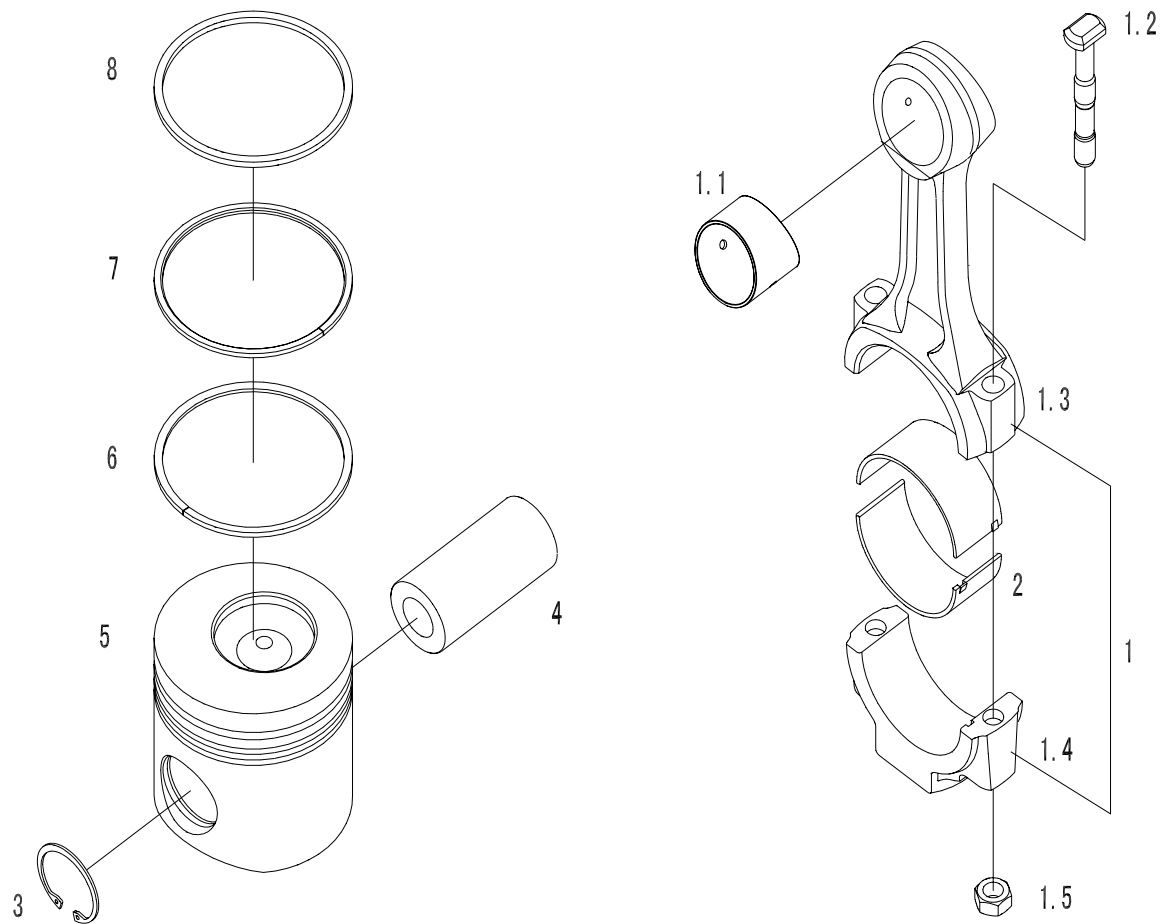


Fig.7 Piston and Connecting Rod

Fig. 7 Piston connecting-rod assembly No. and applicable model

Ass'y Code	Piston connecting-rod ass'y No.	Applicable model
①	D05-000-800	DBK0812 DBK0813 DBK0811

Fig. 7 Parts and componets for Piston connecting-rod assembly

No.	Designation	Order No.	Ass'y Code Qty per set					No.	Designation	Order No.	Ass'y Code Qty per set					
			①	②	③	④	⑤				①	②	③	④	⑤	
1	Machining parts for connecting-rod	D05-001-30	6					3	A-type elastic retaining ring for hole application	GB/T893.1-45	12					
1.1	Connecting-rod bushing	D05-104-30	6					4	Piston pin	D05-112-01	6					
1.2	Connecting-rod bolt	D05-105-30	12					5	Piston	D05-101-800M	6					
1.3	Connecting-rod body	D05-102-30	6					6	Oil ring fittings	D05-002-800	6					
1.4	Connecting-rod cap	D05-103-30	6					7	Inscribe cone-face ring	D05-108-01aA	6					
1.5	Connecting-rod nut	D05-106-01a	12					8	Trapezoid drum-face ring	D05-107-01aA	6					
2	Connecting-rod bearing shell	D05-113-31	12													

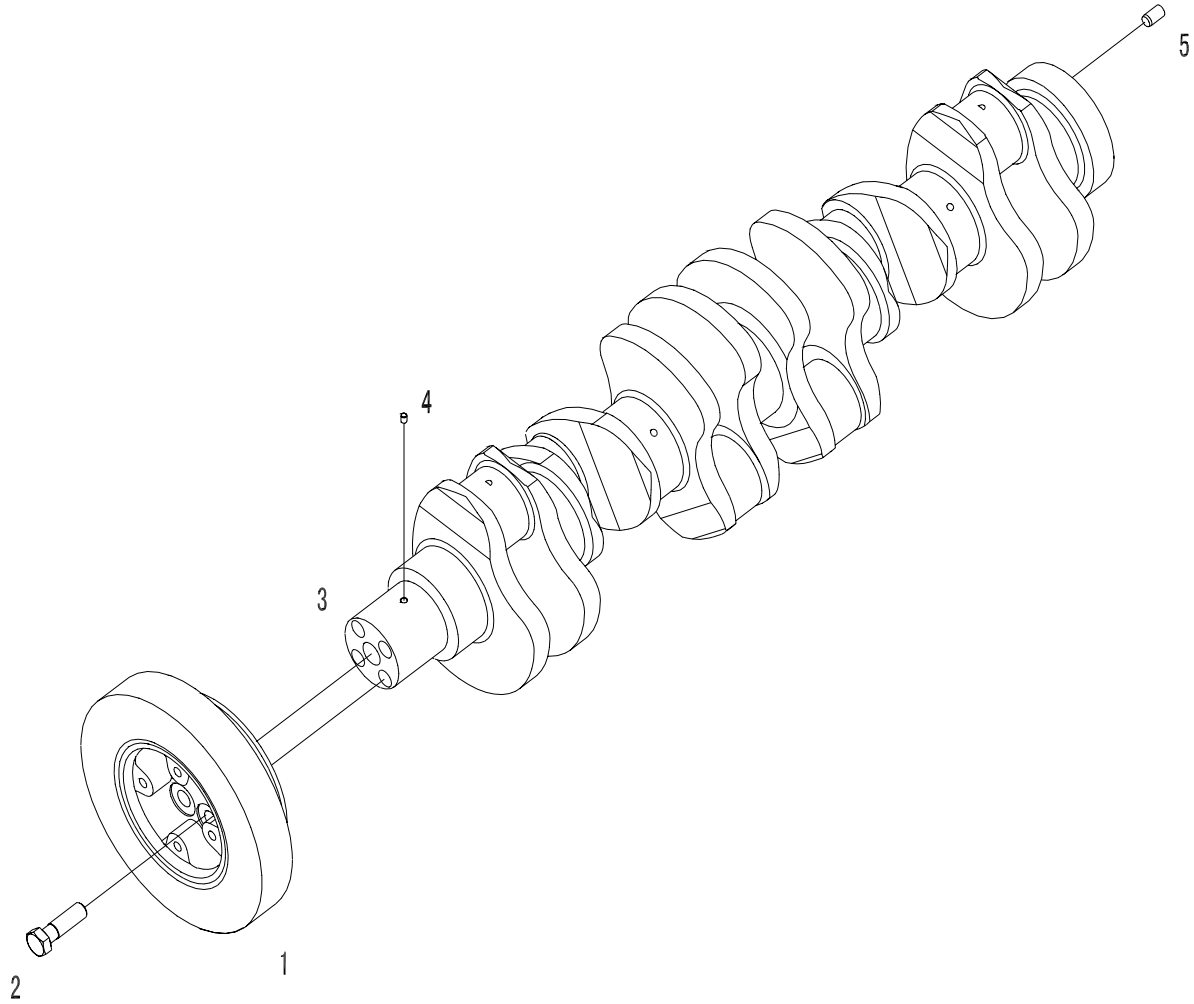


Fig.8 Crankshaft and Vibration Damper

Fig.8 Crankshaft vibration dumper assembly No. and applicable model

Ass'y Code	Crankshaft vibration dumper ass'y No.	Applicable model
①	D06A-000-37	DBK0812 DBK0813 DBK0811

Fig.8 Parts and componets for Crankshaft vibration dumper assembly

No.	Designation	Order No.	Ass'y Code Qty per set					No.	Designation	Order No.	Ass'y Code Qty per set				
			①	②	③	④	⑤				①	②	③	④	⑤
1	Torsional vibration damper	D06A-002-34b	1					4	Straight pin	D06A-110-01	1				
2	Vibration damper bolt	D06A-109-30	4					5	Straight pin	GB/T119-A12×24	1				
3	Crankshaft	D06A-101-33	1												

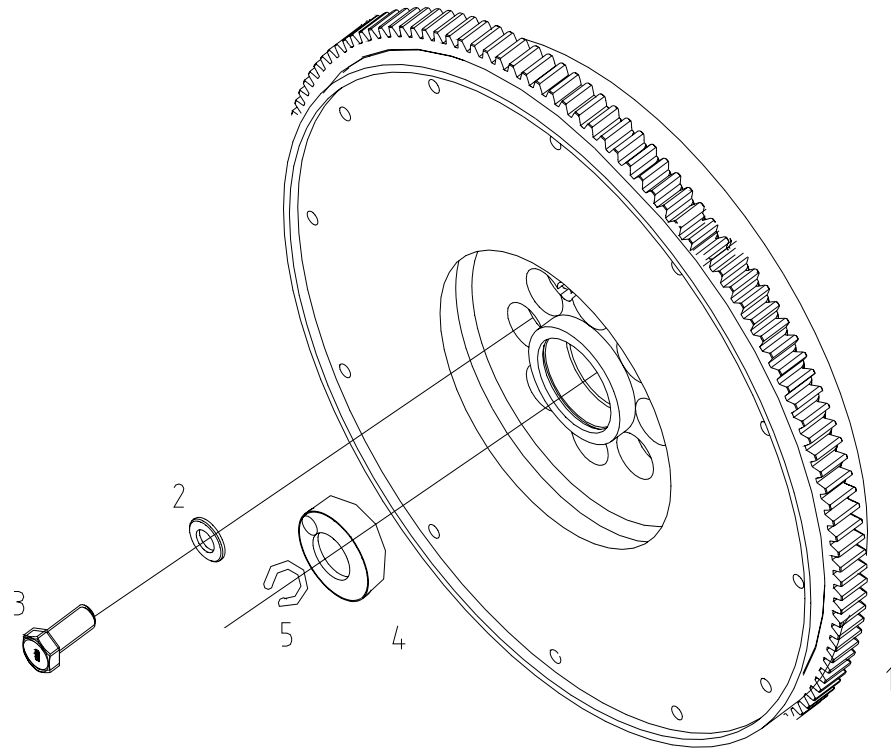


Fig.9 Flywheel

Fig.9 Flywheel assembly No. and applicable model

Ass'y Code	Flywheel ass'y No.	Applicable model
①	D06B-000-800	DBK0812 DBK0813 DBK0811

Fig.9 Parts and components for Flywheel assembly

No.	Designation	Order No.	Ass'y Code Qty per set							No.	Designation	Order No.	Ass'y Code Qty per set						
			①	②	③	④	⑤	⑥	⑦				①	②	③	④	⑤	⑥	⑦
1	Flywheel and starting gear assemblies	D06B-001-800	1							4	Bearing	GB/T276-6305-2RS	1						
2	Gasket	GB/T97.2-14-200HV-Y	8							5	A-type elastic retaining ring for hole application	GB/T893.1-62	1						
3	Flywheel bolt	D06B-108-30	8																

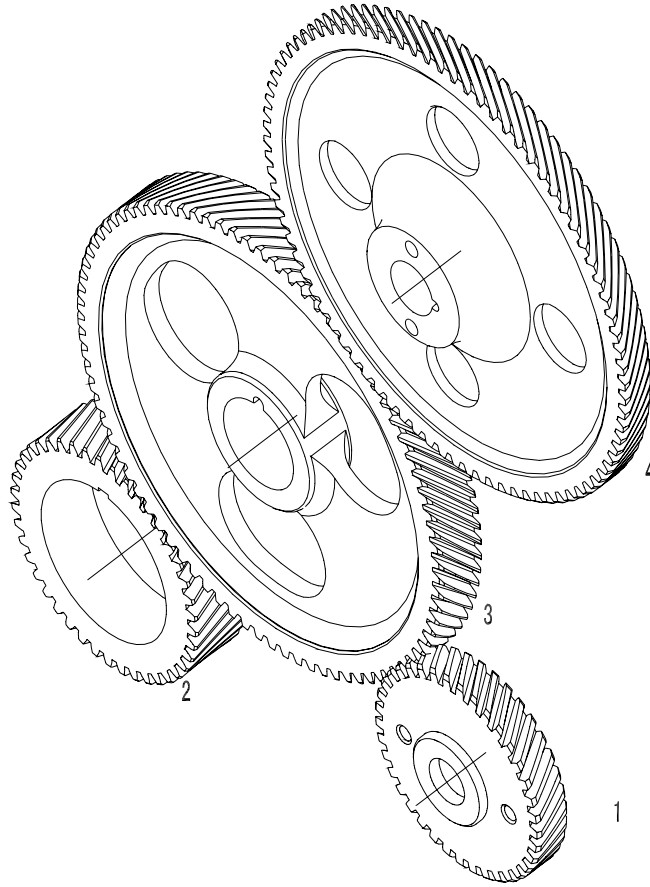


Fig. 10 Driving Gear

Fig.10 Drive gear assembly No. and applicable model

Ass'y Code	Drive gear ass'y No.	Applicable model
①	D07-000-800	DBK0812 DBK0813 DBK0811

Fig.10 Parts and componets for Drive gear assembly

No.	Designation	Order No.	Ass'y Code Qty per set					No.	Designation	Order No.	Ass'y Code Qty per set				
			①	②	③	④	⑤				①	②	③	④	⑤
1	Compressed air pump gear	D07-104-03	1					3	Camshaft gear	D07-102-02	1				
2	Crankshaft gear	D07-101-30a	1					4	High-pressure oil pump gear	D07-103-800	1				

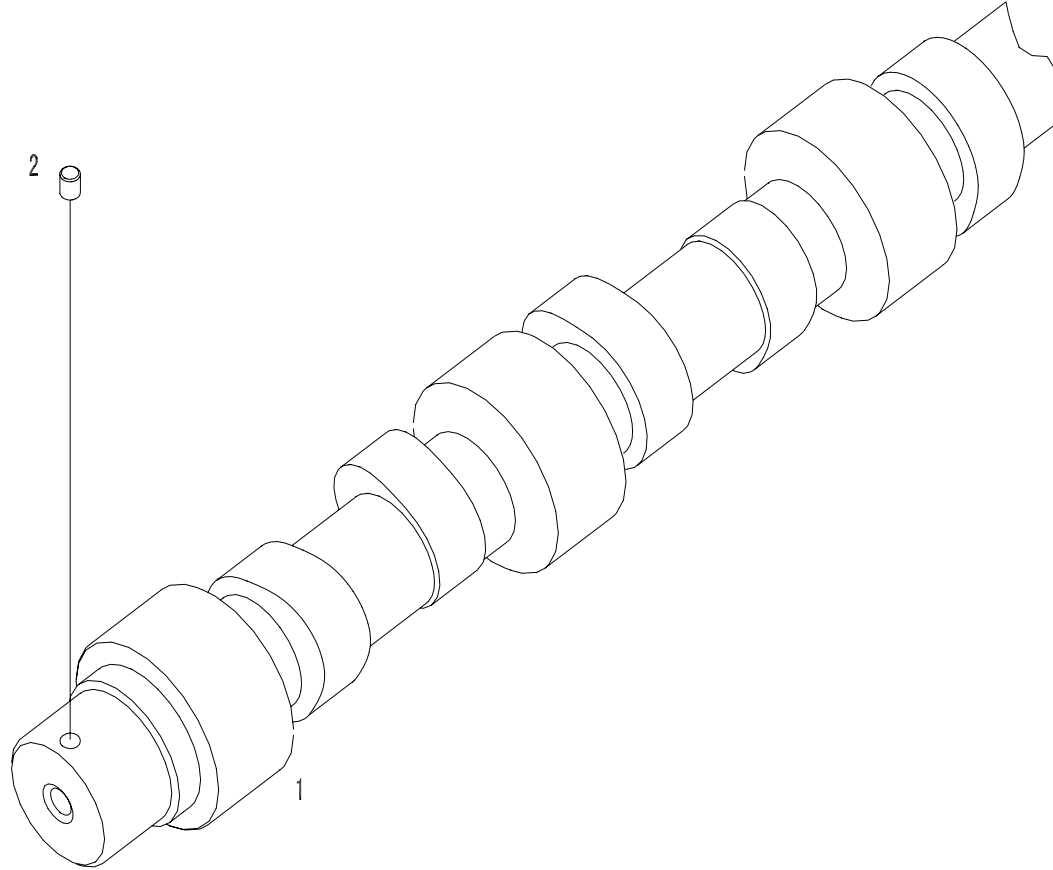


Fig.11 Camshaft

Fig. 11 Camshaft assembly No. and applicable model

Ass'y Code	Camshaft ass'y No.	Applicable model
①	D09-000-30c	DBK0812 DBK0813 DBK0811

Fig. 11 Parts and components for Camshaft assembly

No.	Designation	Order No.	Ass'y Code Qty per set					No.	Designation	Order No.	Ass'y Code Qty per set				
			①	②	③	④	⑤				①	②	③	④	⑤
1	Camshaft	D09-101-30e	1					2	Pin	D06A-110-01	1				

Fig. 12 Starting system assembly No. and applicable model (without fig.)

Ass'y Code	Starting system ass'y No.	Applicable model
①	D11-000-77	DBK0812 DBK0813 DBK0811

Fig. 12 Parts and components for Starting system assembly

No.	Designation	Order No.	Ass'y Code Qty per set					No.	Designation	Order No.	Ass'y Code Qty per set				
			①	②	③	④	⑤				①	②	③	④	⑤
1	Starting motor	D11-101-03b	1					7	Hex flange-face bolt	Q/SC622-M10×30	1				
2	AC integrated generator	D11-102-09	1					8	Support, Relay	D11-115-02	1				
3	Generator bracket	D11-103-30c	1					9	Relay	D11-116-01a	1				
4	Spacer	D11-104-01	1					10	Hex flange-face bolt	Q/SC622-M6×20	2				
5	Hex flange-face bolt	Q/SC622-M10×100-10.9	1					11	Nut, hex flange head cap	GB/T6177-M6-Y	2				
6	Bracing	D11-105-30a	1												

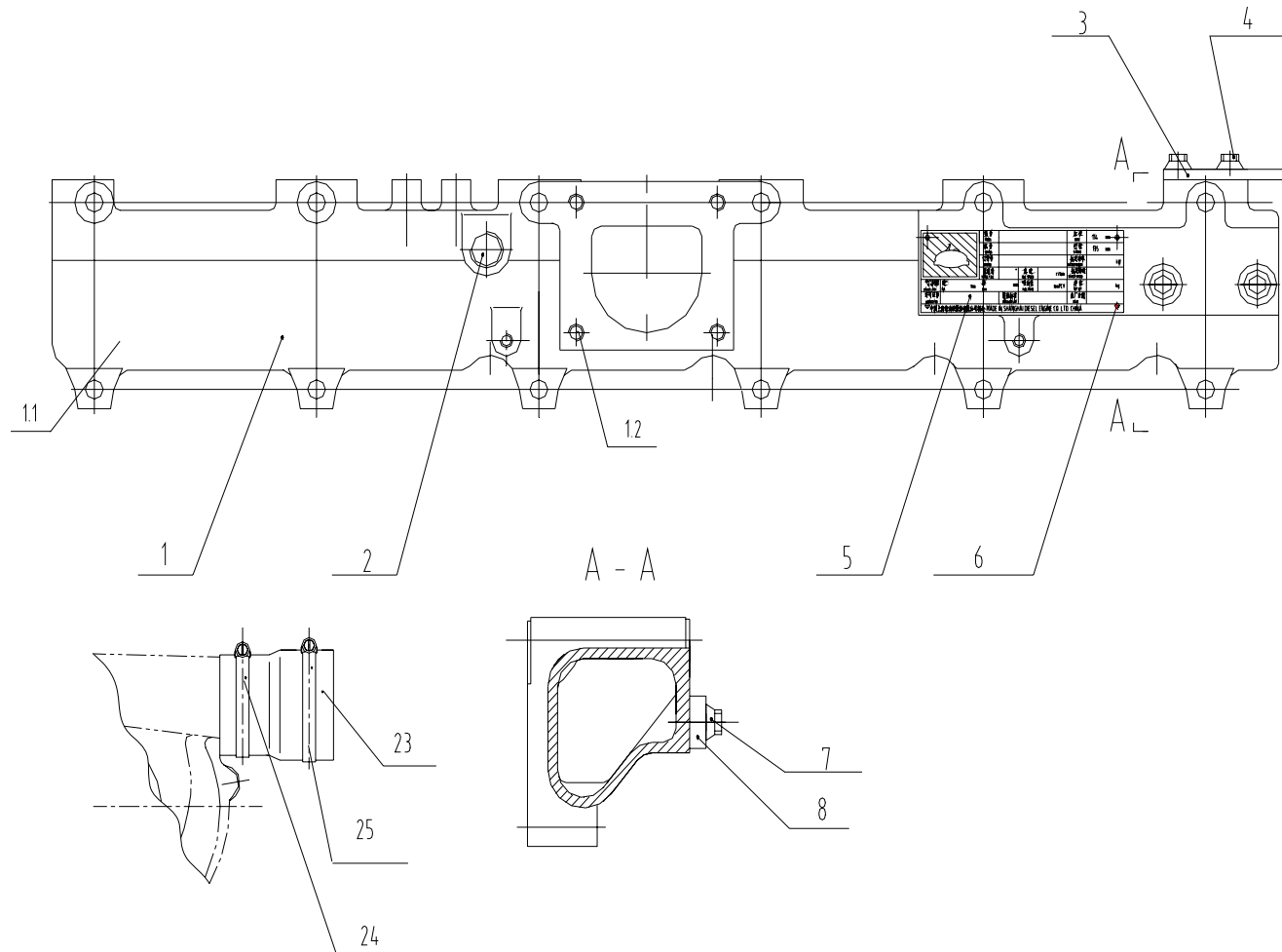


Fig.13 Intake Manifold I

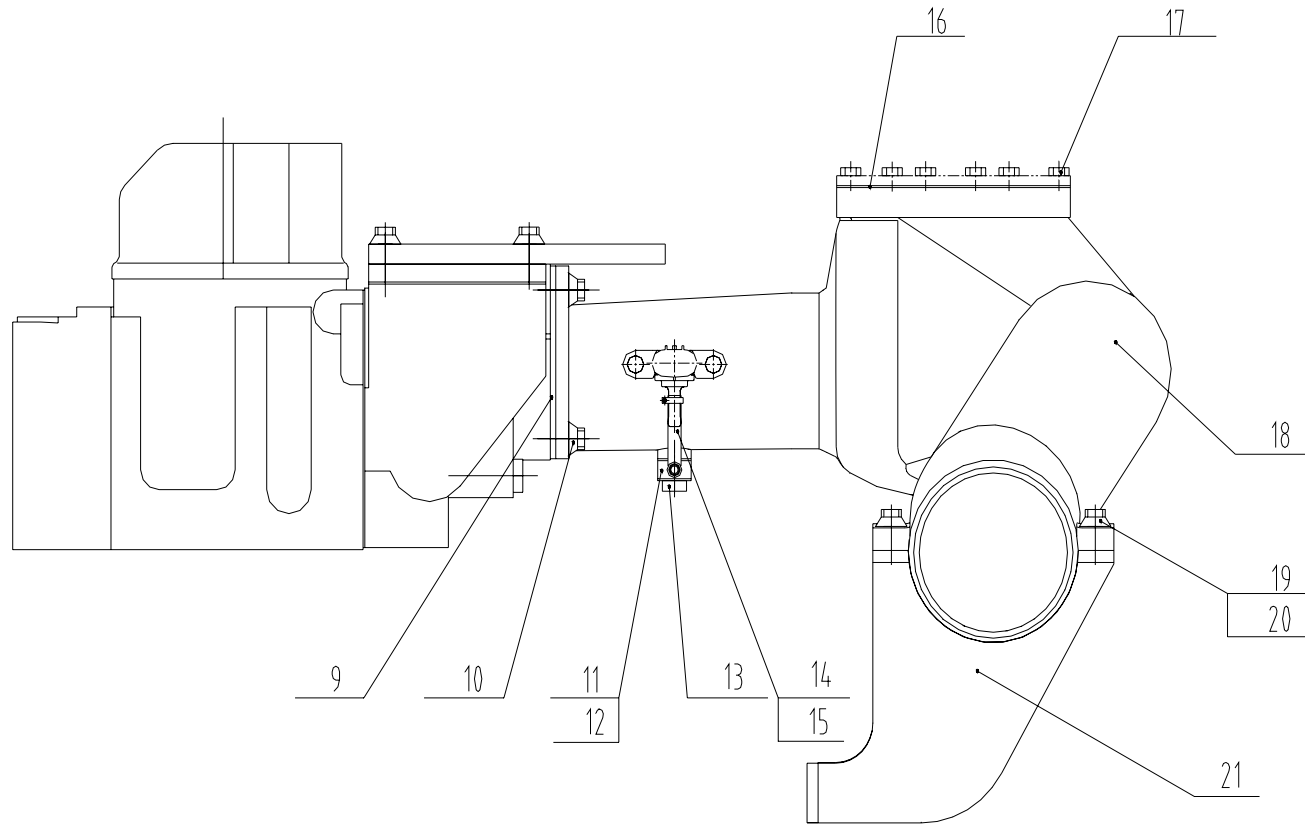


Fig.13 Intake ManifoldII

Fig. 13 Intake pipe assembly No. and applicable model

Ass'y Code	Intake pipe ass'y No.	Applicable model
①	D12-000-804	DBK0812
②	D12-000-805	DBK0813 DBK0811

Fig. 13 Parts and components for Intake pipe assembly

No.	Designation	Order No.	Ass'y Code					No.	Designation	Order No.	Ass'y Code				
			Qty per set								Qty per set				
			①	②	③	④	⑤				①	②	③	④	⑤
1	Intake pipe ass'y	D12-001-800	1	1				15	Throat hoop	Q/SC1302-9~16	2	2			
2	Hex socket head screw plug (Z1/2)	D02A-164-01	1	1				16	Gasket	D12-105-800	1	1			
3	Fuel oil filter bracket	D12-110-800	1	1				17	Hex flange-face bolt	GB/T5783-M6×16	6	6			
4	Hexagon head bolt	Q/SC622-M8×20	4	4				18	Intake joint pipe	D12-310-11	1	1			
5	Name-plate	D12-309-03	1	1				19	Hexagon head bolt	Q/SC622-M10×30	1	1			
6	Name-plate rivet	GB/T827-2.5×6-L3	4	4				20	Hex flange-face nut	GB/T6177-M10-Y	1	1			
7	Hexagon head bolt	Q/SC622-M8×30	2	2				21	Bracket	D12B-113-37	1	1			
8	Shim block	D00-187-02	2	2				22	Clip	D12B-107-01	1	1			
9	Intake port shim	D12-103-800	1	1				23	Hose	D12-104-32a	1				
10	Hexagon head bolt	Q/SC622-M8×20	4	4				24	Spring retainer	QS/C1092-60	1				
11	Welded parts for pipe connector	D12-002-800	1	1						QS/C1092-70		1			
12	Copper washer	Q/SC598-8×14	2	2				25	Spring retainer	QS/C1092-65	1				
13	Hinged bolt	Q/SC642.1-01-M8×1	1	1						QS/C1092-75			1		
14	Rubber hose	D12-116-801	1	1											

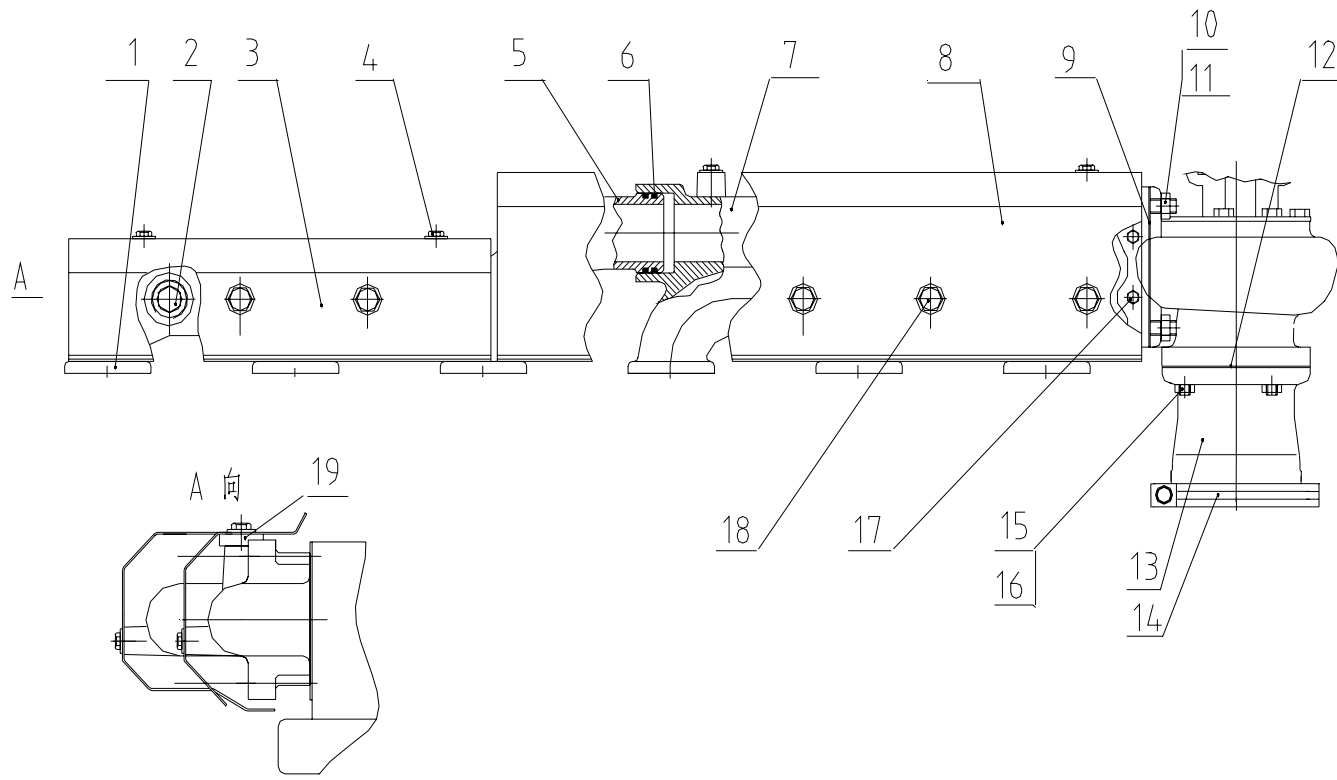


Fig.14 Exhaust Manifold

Fig. 14 Exhaust pipe assembly No. and applicable model

Ass'y Code	Exhaust pipe ass'y No.	Applicable model
①	D13-000-30a	DBK0812
②	D13-000-94	DBK0813
③	D13-000-87	DBK0811

Fig.14 Parts and components for Exhaust pipe assembly

No.	Designation	Order No.	Ass'y Code Qty per set					No.	Designation	Order No.	Ass'y Code Qty per set				
			①	②	③	④	⑤				①	②	③	④	⑤
1	Exhaust pipe	D13-101-30b	1					9	Turbine inlet gasket	D13-102-30b	1	1	1		
	Exhaust pipe (#1-4 cylinder)	D13-101-40		1				10	Stud bolt	D13-103-01	4	4	4		
	Exhaust pipe (#1-3 cylinder)	D13-101-44			1			11	Supercharger interface nut	D13-304-01	4	4	4		
2	Hex socket head bolt	D02A-163-01			4			12	Turbine outlet gasket	D13-302-01	1				
3	Heat-insulating plate	D13-154-04a		1				13	Connecting case for turbine outlet	D13-301-01	1				
	Heat-insulating plate (#1-3 cylinder)	D13-321-02			1			14	Clip	D13-001-01	1	1	1		
4	Heat-insulating palte bolt	D13-318-02		2	4			15	Stud bolt	D13-303-01	1				
5	Seal ring busing	D13-112-03						16	I-shape hexagon nut	GB/T41-M8-Y	6				
6	Seal ring	D13-111-30		4	4			17	Screw plug	D02A-166-01	2	2	2		
7	Exhaust pipe (Cylinders 5-6)	D13-101-41		1				18	Heat-insulating palte bolt	D13-318-01		2	5		
	Exhaust pipe (Cylinders 4-6)	D13-101-45			1			19	Shim block	D00-187-02		2	5		
8	Heat-insulating palte (#4-6 Cylinder)	D13-322-01		1				20	Nut, Hex Flange Head Cap	GB/T6177-M10-Y	4				
		D13-322-02			1			21	Nut, Hex Flange Head Cap	GB/T6177-M8-Y	6				

Fig. 14 Parts and components for Exhaust pipe assembly

No.	Designation	Order No.	Ass'y Code Qty per set					No.	Designation	Order No.	Ass'y Code Qty per set				
			①	②	③	④	⑤				①	②	③	④	⑤
22	Bolt, Hex Flange Head Cap	Q/SC622-M10×25		2				23	Nut, Hex Flange Head Cap	GB/T6170-M12-Y		2			

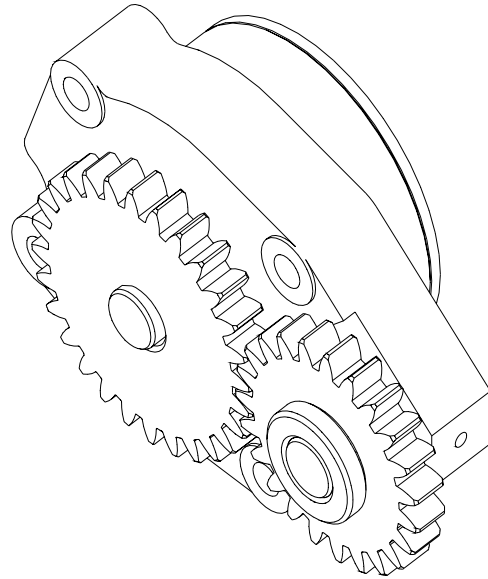


Fig.15 Lube Oil Pump

Fig. 15 Lube oil pump assembly No. and applicable model

Ass'y Code	Lube oil pump ass'y No.	Applicable model
①	D15-000-31	DBK0812 DBK0813 DBK0811

Fig. 15 Parts and components for Oil pump assembly

No.	Designation	Order No.	Ass'y Code Qty per set					No.	Designation	Order No.	Ass'y Code Qty per set								
			①	②	③	④	⑤				①	②	③	④	⑤				
1	Oil pump	D15-000-31	1																

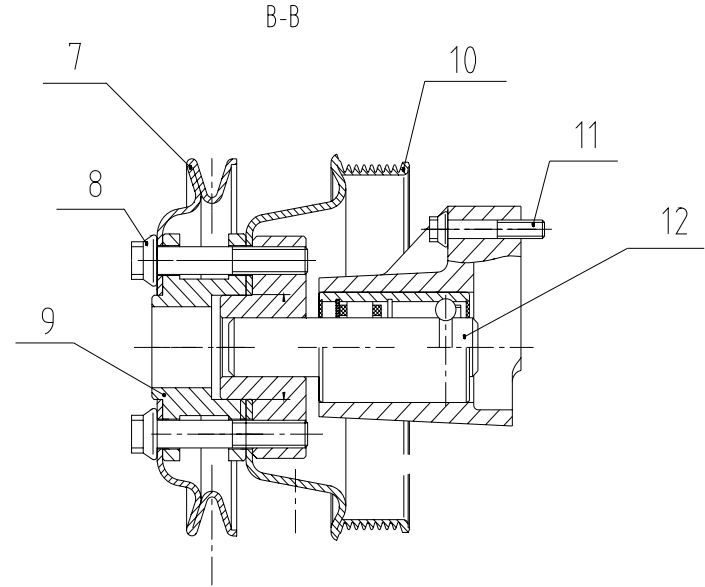
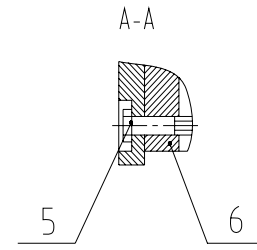
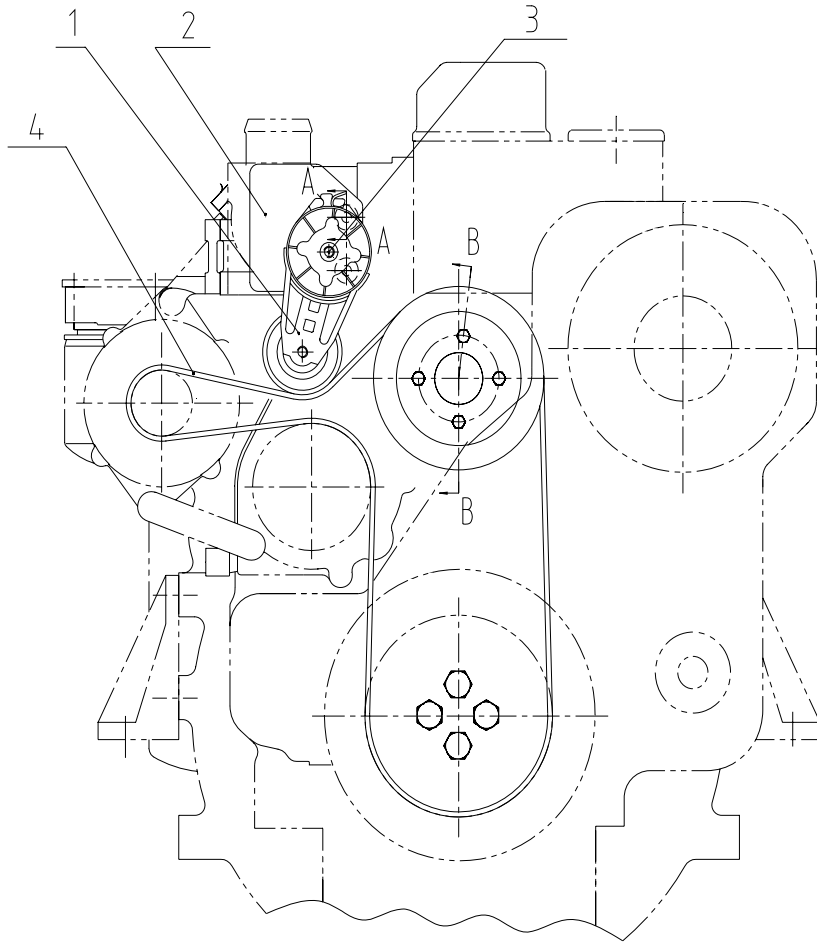


Fig.16 Front Drive

Fig.16 Front-end drive assembly No. and applicable model

Ass'y Code	Front-end drive ass'y No.	Applicable model
①	D16A-000-132	DBK0812 DBK0813 DBK0811

Fig.16 Parts and components for Front-end drive assembly

No.	Designation	Order No.	Ass'y Code Qty per set					No.	Designation	Order No.	Ass'y Code Qty per set				
			①	②	③	④	⑤				①	②	③	④	⑤
1	Tensioner fittings	D16A-003-03	1					7	Output band pulley	D16A-136-01	1				
2	Tensioner fixing plate	D16A-121-36a	1					8	Bolt, Hex Flange Head Cap	Q/SC622-M12×70	4				
3	Hex flange-face bolt	Q/SC622-M10×80-10.9	1					9	Fan space	D16A-128-35	1				
4	Rubber fan belt	D16A-106-05	1					10	Rubber fan belt pulley	D16A-107-14	1				
5	Hexagon Head Bolt	GB/T5782-M8×35	2					11	Hex flange-face bolt	Q/SC622-M8×45	4				
6	space	D16A-135-30b	1					12	Press fittings for fan bearing seat	D16A-010-01a	1				

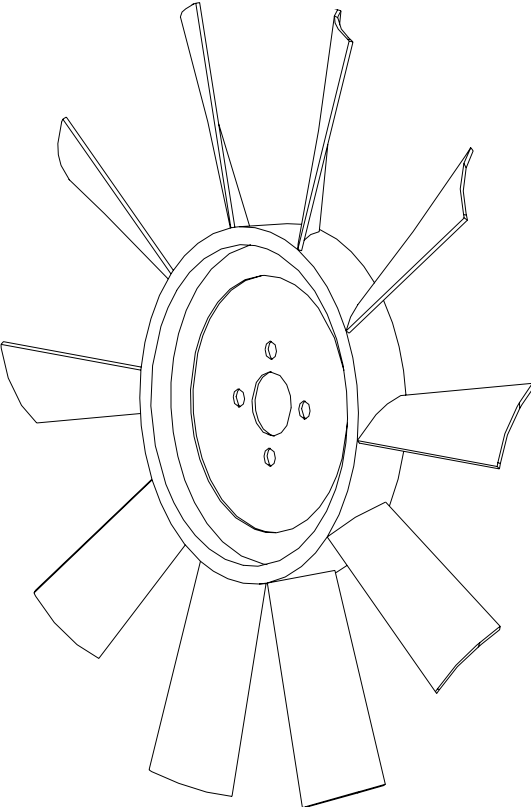


Fig. 17 Cooling Fan

Fig. 17 Fan assembly No. and applicable model

Ass'y Code	Fan ass'y No.	Applicable model
①	D16L-000-07	DBK0812 DBK0813
②	D16L-000-12	DBK0811

Fig. 17 Parts and components for Fan assembly

No.	Designation	Order No.	Ass'y Code Qty per set					No.	Designation	Order No.	Ass'y Code Qty per set				
			①	②	③	④	⑤				①	②	③	④	⑤
1	Fan assembly	D16L-000-07	1							D16L-000-12		2			

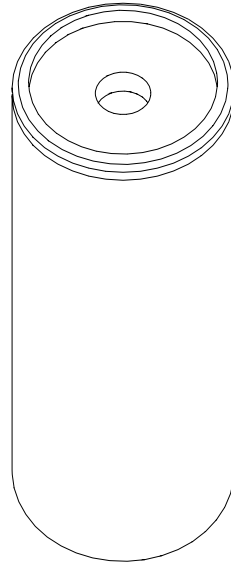


fig.18 Oil filter

Fig.18 Oil filter assembly No. and applicable model

Ass'y Code	Oil filter ass'y No.	Applicable model
①	D17-002-02	DBK0812 DBK0813 DBK0811

Fig.18 Parts and components for Oil filter assembly

No.	Designation	Order No.	Ass'y Code Qty per set					No.	Designation	Order No.	Ass'y Code Qty per set						
			①	②	③	④	⑤				①	②	③	④	⑤		
1	Oil filter ass'y	D17-002-02	1														

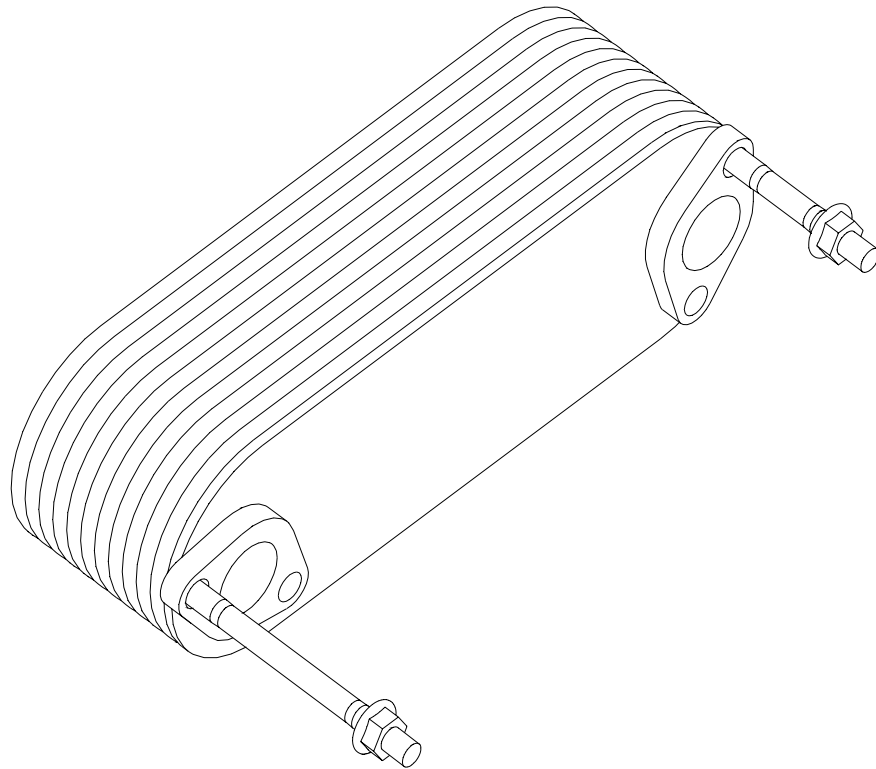


Fig. 19 Oil Cooler

Fig.19 Oil cooler assembly No. and applicable model

Ass'y Code	Oil cooler ass'y No.	Applicable model
①	D18-000-130	DBK0812 DBK0813 DBK0811

Fig.19 Parts and components for Oil cooler assembly

No.	Designation	Order No.	Ass'y Code Qty per set					No.	Designation	Order No.	Ass'y Code Qty per set						
			①	②	③	④	⑤				①	②	③	④	⑤		
1	Oil cooler ass'y	D18-000-130	1														

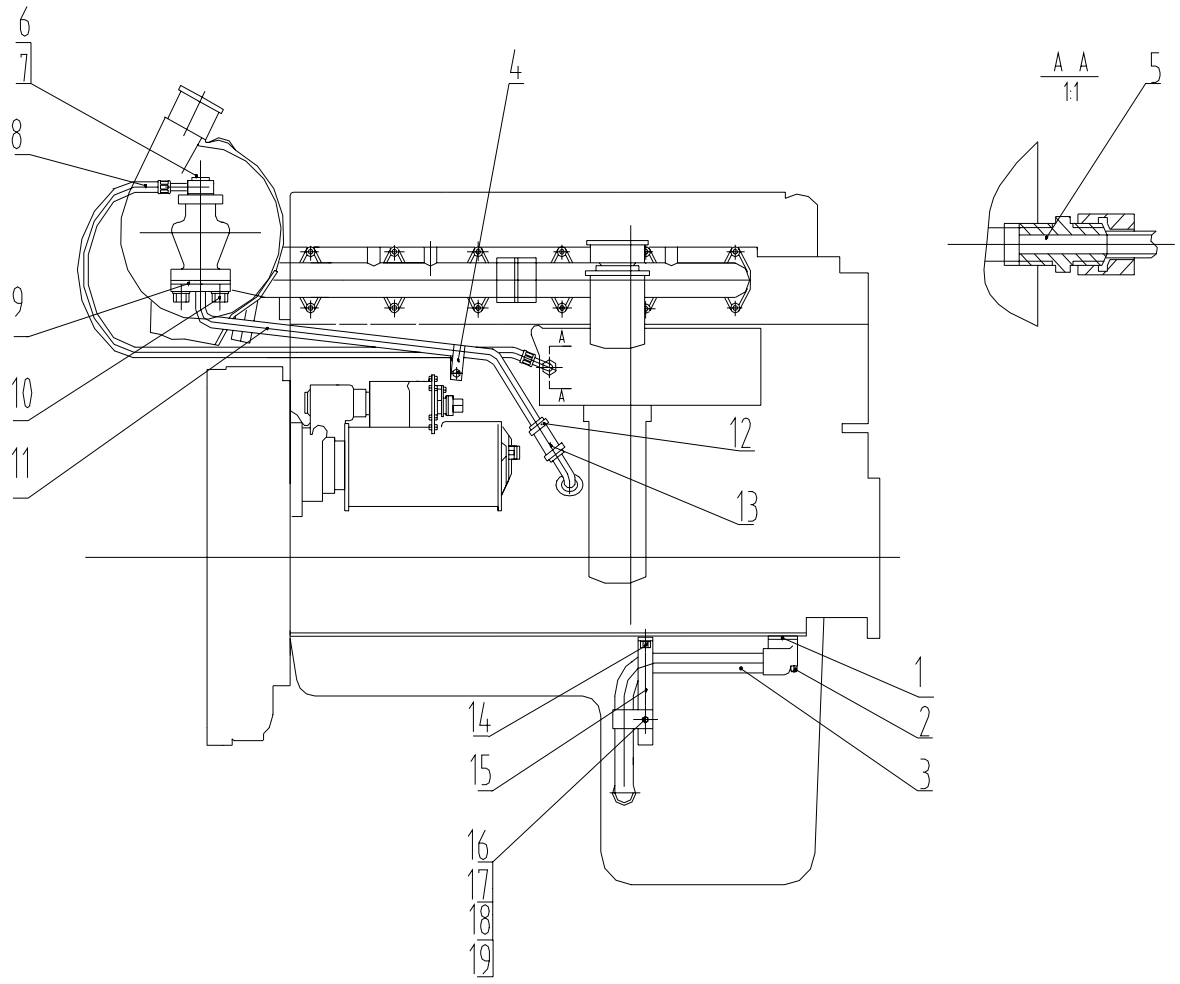


Fig.20 Lubricating Oil Piping

Fig. 20 Oil pipeline assembly No. and applicable model

Ass'y Code	Oil pipeline ass'y No.	Applicable model
①	D19-000-40	DBK0812 DBK0813
②	D19-000-37	DBK0811

Fig. 20 Parts and components for Oil pipeline assembly

No.	Designation	Order No.	Ass'y Code					No.	Designation	Order No.	Ass'y Code				
			Qty per set								Qty per set				
			①	②	③	④	⑤				①	②	③	④	⑤
1	Oil suction pipe flange shim	D19-114-01	1	1				11	Welded parts for super-charger return oil pipe	D19-002-30a	1				
2	Hex socket head screw	GB/T70-M6×50	2	2						D19-002-34		1			
3	Welded parts for oil suction pipe	D19-001-02	1					12	Throat hoop	Q/SC1302-21~38	2	2			
		D19-001-01		1				13	Rubber joint hose	D19-107-01a	1				
4	Clamping collar	D19-003-01a		2						D19-107-02a		1			
5	Connector	D19-118-01	1	1				14	Hex flange-face bolt	Q/SC622-M6×12	2	2			
6	Gasket	Q/SC642.1-03-12	2	2				15	Oil suction pipe support	D19-105-01	1	1			
7	Hinged bolt	Q/SC642.1-01-M12×1.25	1	1				16	Hex flange-face bolt	Q/SC622-M6×20	1	2			
8	Supercharger oil inlet pipe	D19-110-05b	1					17	Hex flange-face nut	GB/T6177-M6	1	2			
		D19-110-03c		1				18	Standard spring washer	GB/T93-6	1	1			
9	Shim	D19-113-02	1	1				19	Flat washer	GB/T97.2-6-200HV-Y	1	1			
10	Hex flange-face bolt	Q/SC622-M10×25	2	2											

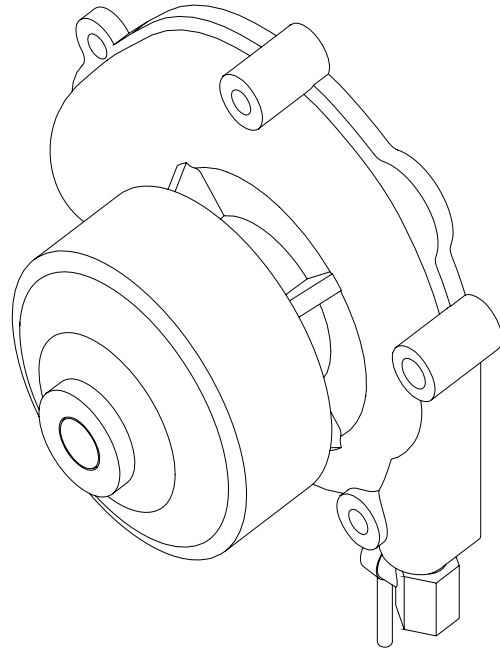


Fig. 21 Water Pump

Fig.21 Water pump assembly No. and applicable model

Ass'y Code	Water pump ass'y No.	Applicable model
①	D20-000-30	DBK0812 DBK0813 DBK0811

Fig.21 Parts and components for Water pump assembly

No.	Designation	Order No.	Ass'y Code Qty per set					No.	Designation	Order No.	Ass'y Code Qty per set							
			①	②	③	④	⑤				①	②	③	④	⑤			
1	Water pump ass'y	D20-000-30	1															

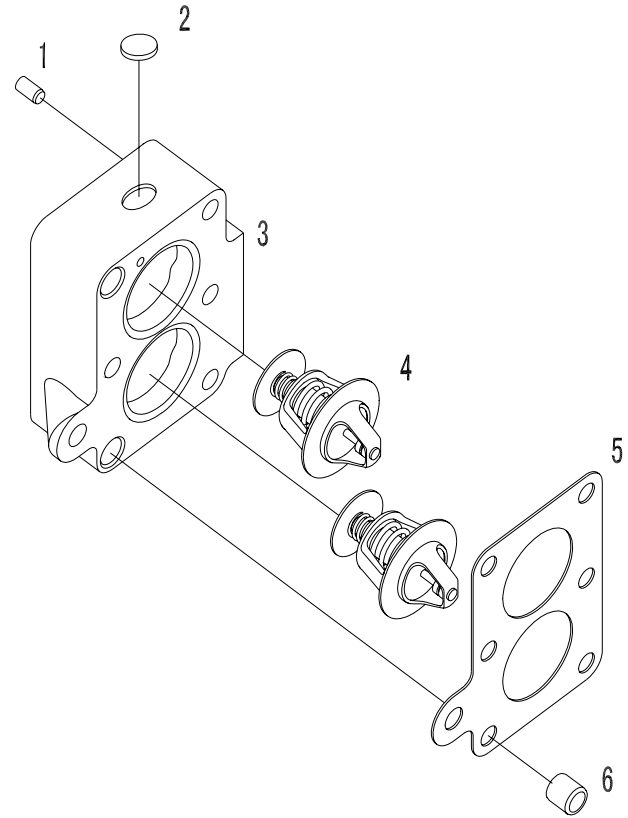
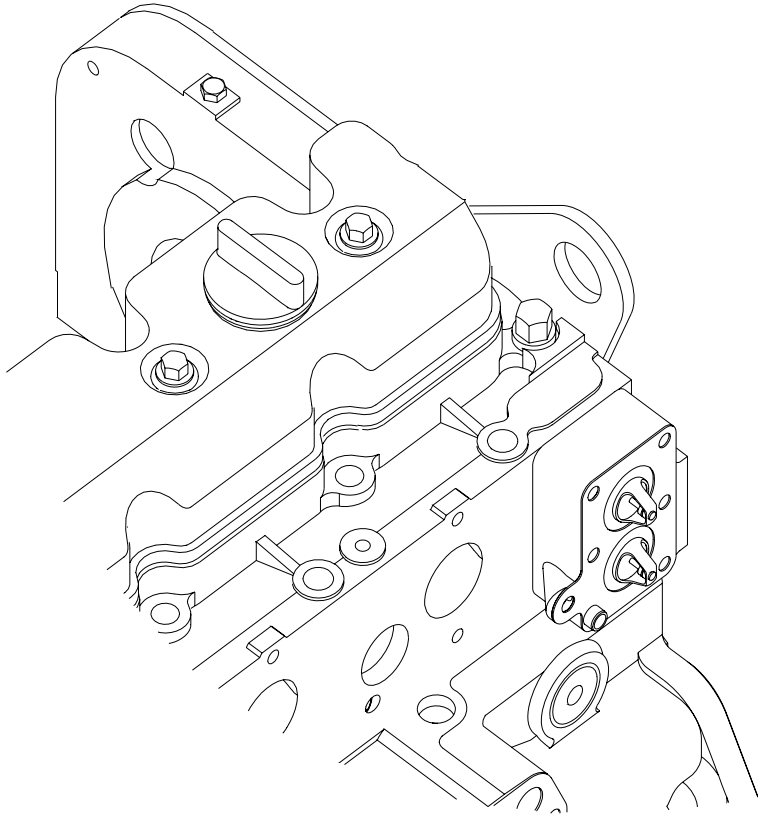


Fig. 22 Thermostat

Fig.22 Thermostat assembly No. and applicable model

Ass'y Code	Thermostat ass'y No.	Applicable model
①	D22-000-39	DBK0812 DBK0813 DBK0811

Fig.22 Parts and components for Thermostat assembly

No.	Designation	Order No.	Ass'y Code Qty per set					No.	Designation	Order No.	Ass'y Code Qty per set				
			①	②	③	④	⑤				①	②	③	④	⑤
1	Straight pin	GB/T119-A6×12	2					4	Thermostat	D22-102-01	2				
2	Hexagon head screw plug (Z1/2)	D02A-164-01	1					5	shim	D22-103-33	1				
3	Thermostat body	D22-101-30c	1					6	Sleeve pin	D22-105-01	2				

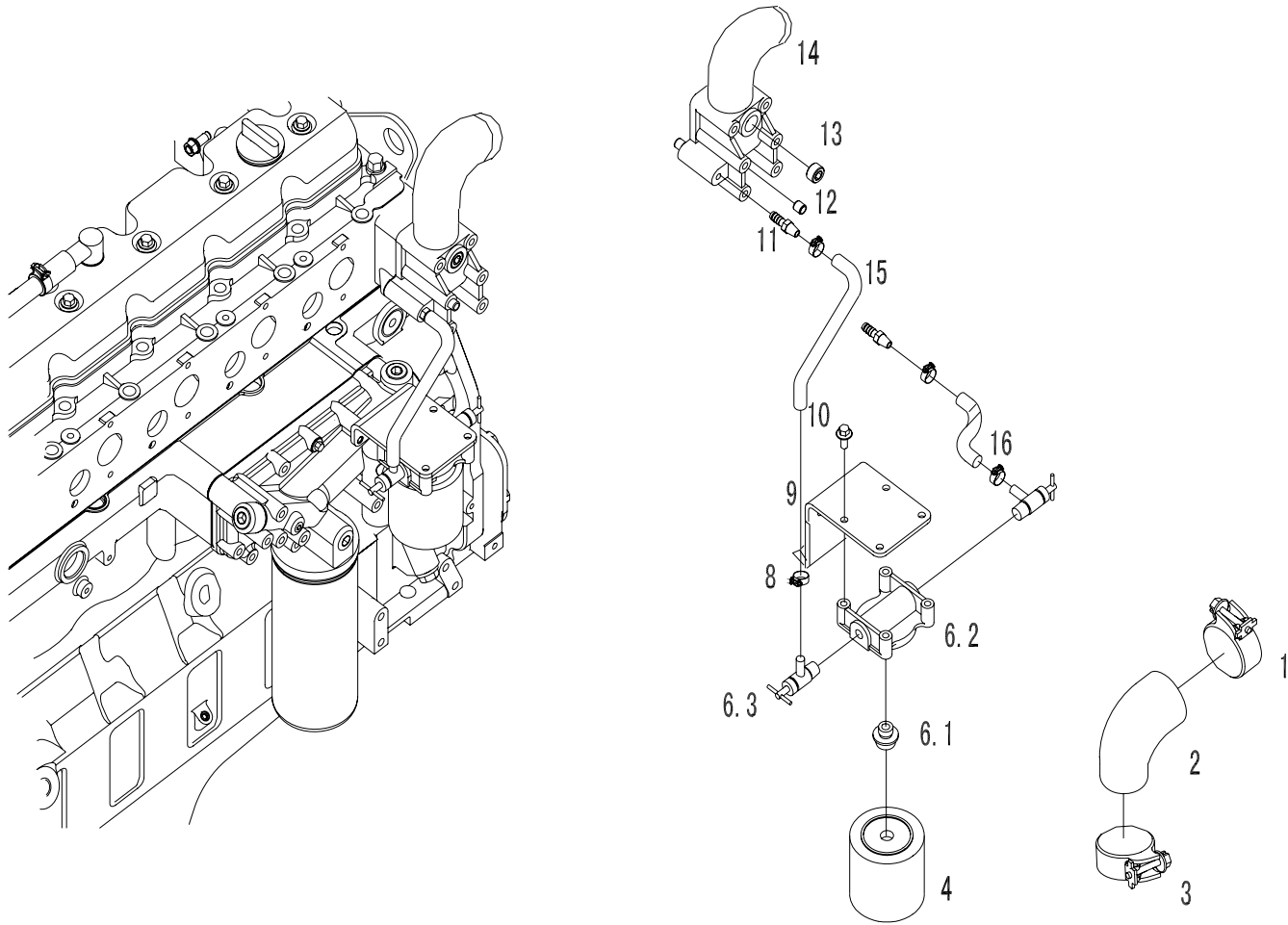


Fig. 23 Coolant Piping and Corrosion Resistor

Fig.23 Water tube & water strainer assembly No.and applicable model

Ass'y Code	Water tube & water strainer ass'y No.	Applicable model
①	D24A-000-800	DBK0812 DBK0813 DBK0811

Fig. 23 Parts and components for Water tube & water strainer assembly

No.	Designation	Order No.	Ass'y Code Qty per set					No.	Designation	Order No.	Ass'y Code Qty per set				
			①	②	③	④	⑤				①	②	③	④	⑤
1	Clamping collar	Q/SC1302-52~76	2					10	Hex flange-face bolt	Q/SC622-M8×30	4				
2	Rubber inlet band pipe	D24A-107-03	1					11	Straight tube connector	D24A-115-02	2				
3	Throat hoop	Q/SC1302-52~76						12	Sleeve pin	D22-105-01	2				
4	“ DCA4 ” water strainer parts	D24A-005-30	1					13	Hex socket head screw plug (Z1/2)	D02A-164-01	1				
6	Water strainer cover	D24A-006-01	1					14	Outlet water pipe	D24A-110-32	1				
6.1	Water strainer connector	D24A-114-01	1					15	Rubber hose for water strainer connection	D24A-116-31	1				
6.2	Water strainer cover	D24A-113-01	1					16	Rubber hose for water strainer connection	D24A-116-01	1				
6.3	Shutoff valve	D24A-118-01	2					17	“ DCA4 ” additive(one bottle)	D24A-119-30	1				
8	Throat hoop	Q/SC1302-16~25	4					18	“ DCA ” inspection box	D24A-007-02	1				
9	Water strainer fixing plate	D24A-112-800	1												

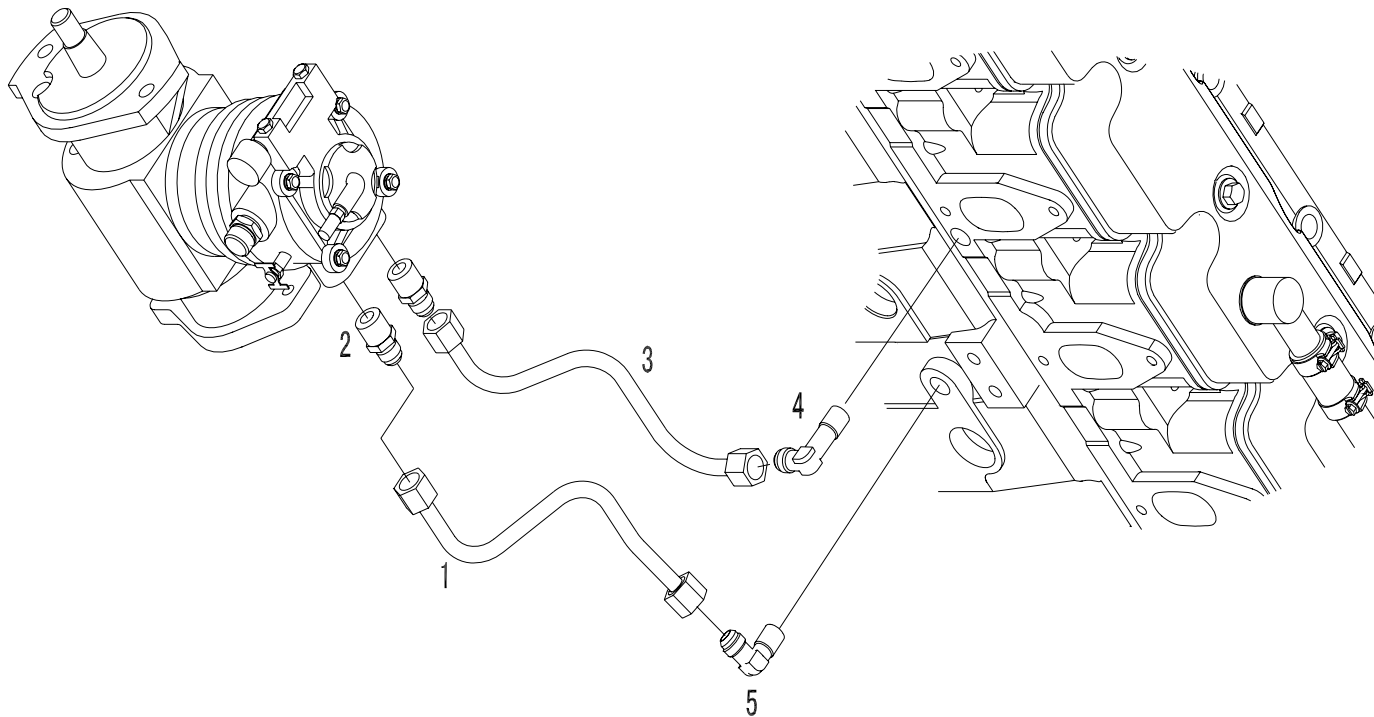


Fig. 24 Assorted water pipeline

Fig. 24 Assorted water pipeline assembly No. and applicable model

Ass'y Code	Assorted water pipeline ass'y No.	Applicable model
①	D24B-000-801	DBK0812 DBK0813 DBK0811

Fig. 24 Parts and components for Assorted water pipeline assembly

No.	Designation	Order No.	Ass'y Code Qty per set					No.	Designation	Order No.	Ass'y Code Qty per set				
			①	②	③	④	⑤				①	②	③	④	⑤
1	Air compressor inlet pipe ass'y	D24B-001-301	1					4	Elbow joint	D24B-104-36	1				
2	Pipe fitting	D24B-106-32	2					5	Elbow joint	D24B-104-35	1				
3	Air compressor outlet pipe ass'y	D24B-002-801	1												

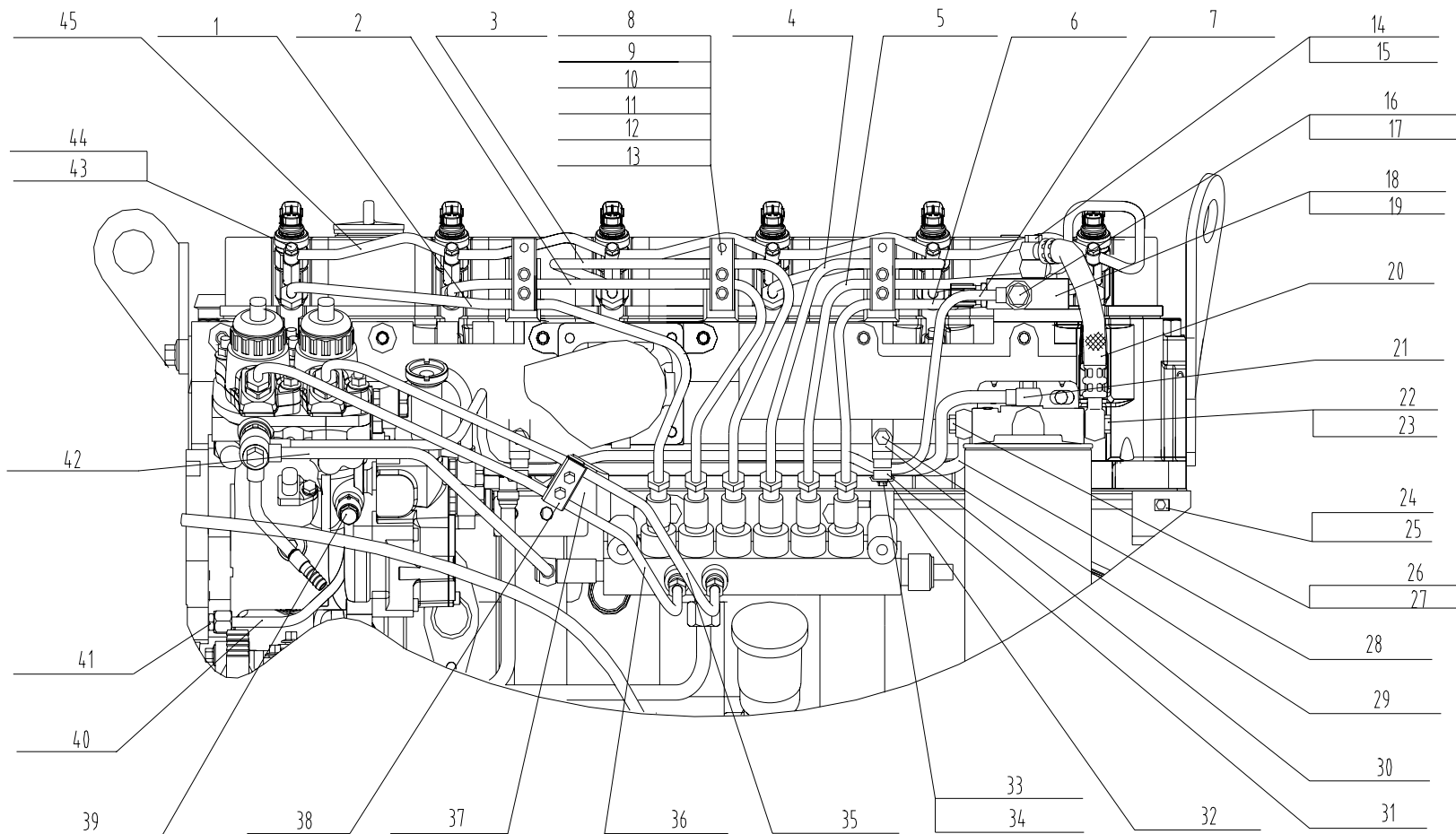


Fig.25 Fuel Piping

Fig. 25 Fuel oil pipeline assembly No. and applicable model

Ass'y Code	Fuel oil pipeline ass'y No.	Applicable model
①	D26C-000-801a	DBK0812 DBK0813 DBK0811

Fig. 25 Parts and components for Fuel oil pipeline assembly

No.	Designation	Order No.	Ass'y Code					No.	Designation	Order No.	Ass'y Code				
			Qty per set								Qty per set				
			①	②	③	④	⑤				①	②	③	④	⑤
1	Fuel injection pipe ass'y (#1 cylinder)	D26C-001-801b	1					15	Copper washer	Q/SC598-12×18	3				
2	Fuel injection pipe ass'y (#2 cylinder)	D26C-002-801	1					16	Hinged bolt	Q/SC642.1-M12×1.25	1				
3	Fuel injection pipe ass'y (#3 cylinder)	D26C-003-801	1					17	Copper washer	Q/SC598-12×18	2				
4	Fuel injection pipe ass'y (#4cylinder)	D26C-004-801	1					18	Fuel temp. sensor connector	D26C-121-800	1				
5	Fuel injection pipe ass'y (#5 cylinder)	D26C-005-801	1					19	Hex flange-face bolt	Q/SC622-M8×35	2				
6	Fuel injection pipe ass'y (#6 cylinder)	D26C-006-801	1					20	Overflow return oil pipe	D26C-141-800a	1				
7	Return oil pipe fittings	D26-011-800b	1					21	Oil pipe fittings from filter to high-pressure oil pump	D26C-017-800b	1				
8	Clamping gasket	D26-104-01	8					22	Overflow valve ass'y	D26C-021-800	1				
9	Fixed support for oil pipe	D26-113-01	3					23	Copper washer	Q/SC598-14×20	2				
10	Upper clamping piece	D26-151-800	3					24	Hex flange-face bolt	Q/SC622-M6×10	1				
11	Hexagon head bolt	GB/T5783-M8×20	3					25	Harness fix-clip	D26C-152-800	1				
12	Flat washer	GB/T97.1-8-200HY	8					26	Copper washer	Q/SC598-14×20	4				
13	Hex flange-face bolt	Q/SC622-M5×25	8					27	Hinged bolt	Q/SC642.1-M14×1.5	2				
14	Hinged bolt	D26C-142-800	1												

Fig. 25 Parts and components for Fuel oil pipeline assembly

No.	Designation	Order No.	Ass'y Code					No.	Designation	Order No.	Ass'y Code				
			Qty per set								Qty per set				
			①	②	③	④	⑤				①	②	③	④	⑤
28	Oil pipe fittings from transfer pump to filter	D26C-016-800b	1					37	Welded parts for co-rail oil inlet pipe bracket	D26C-012-800	1				
29	Hex flange-face bolt	Q/SC622-M8×16	2					38	Upper clamping piece	D26-105-01	1				
30	Low-pressure oil pipe fixed bracket	D26C-020-800	1					39	Hinged bolt	Q/SC642.1-M10×1	1				
31	Nylon piece	D26C-131-800	4					40	Oil inlet pipe fittings for oil pump	D26-132-01	1				
32	Clamping piece	D26C-130-800	2					41	Oil outlet connector	D26-305-01	1				
33	Hex flange-face bolt	Q/SC622-M6×25	4					42	Co-rail oil return parts	D26C-019-800c	1				
34	Flat washer	GB/T97.1-8-200HV	4					43	Copper washer	Q/SC598-8×14	12				
35	Co-rail oil inlet pipe fittings (#2 pc)	D26C-008-800	1					44	Hinged bolt	Q/SC642.1-M8×1	6				
36	Co-rail oil inlet pipe fittings (#1pc)	D26C-007-800	1					45	Return pipe fittings	D26C-009-800b	1				

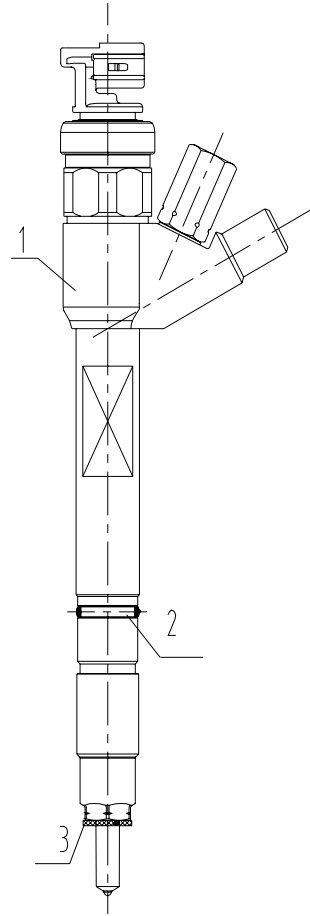


Fig.26 Fuel Injector

Fig. 26 Fuel oil injector assembly No. and applicable model

Ass'y Code	Fuel oil injector ass'y No.	Applicable model
①	D28-000-801	DBK0812 DBK0813
②	D28-000-800	DBK0811

Fig. 26 Parts and components for Fuel oil assembly

No.	Designation	Order No.	Ass'y Code Qty per set					No.	Designation	Order No.	Ass'y Code Qty per set				
			①	②	③	④	⑤				①	②	③	④	⑤
1	Fuel injector fittings	D28-001-801	6					2	"O" seal ring for fuel injector	D28-102-800	6	6			
		D28-001-800		6				3	Copper washer	D28-102-04	6	6			

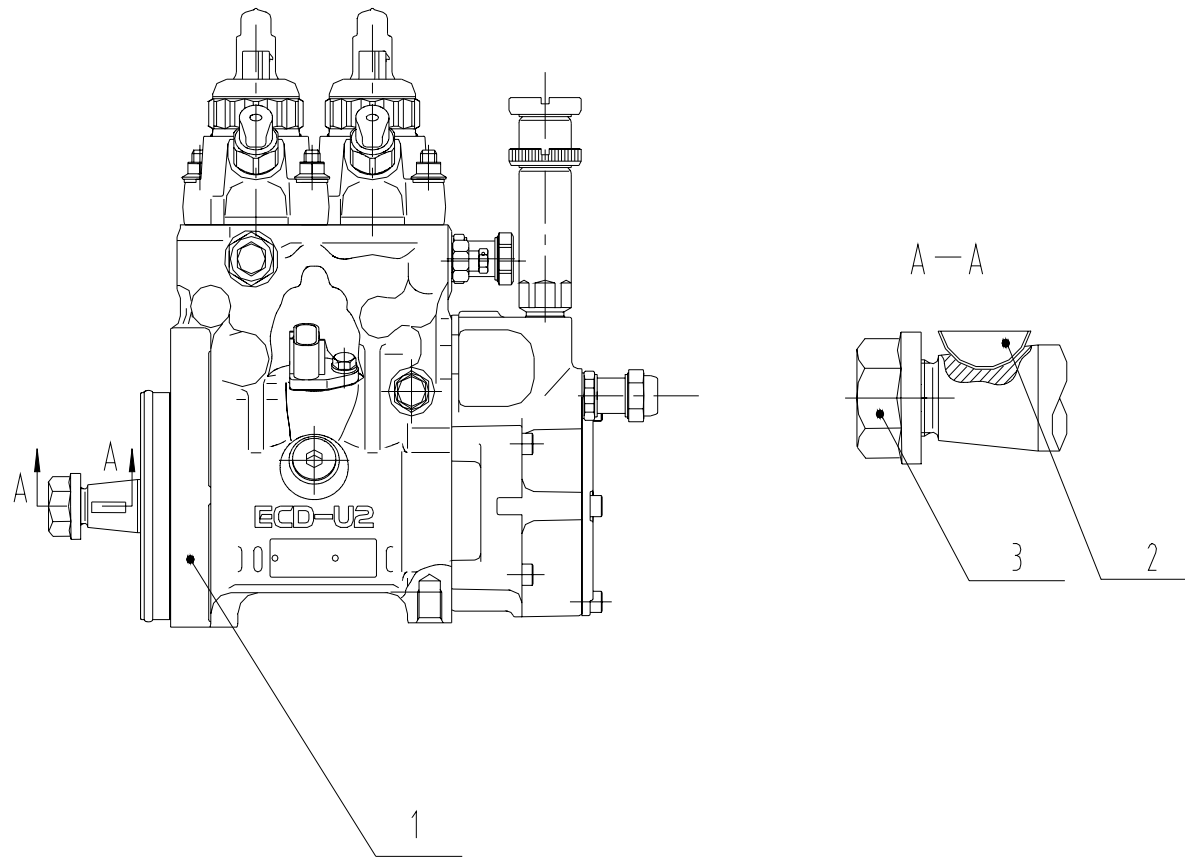


Fig. 27 Injection pump

Fig.27 Inpection pump assembly No.and applicable model

Ass'y Code	Injection pump ass'y No.	Applicable model
①	D28C-000-801	DBK0812 DBK0813 DBK0811

Fig.27 Parts and components for Injection pump assembly

No.	Designation	Order No.	Ass'y Code Qty per set					No.	Designation	Order No.	Ass'y Code Qty per set				
			①	②	③	④	⑤				①	②	③	④	⑤
1	Injection pump fittings	D28C-001-800	1					3	nut	D28C-102-800	1				
2	Half-round key	D28C-101-801	1												

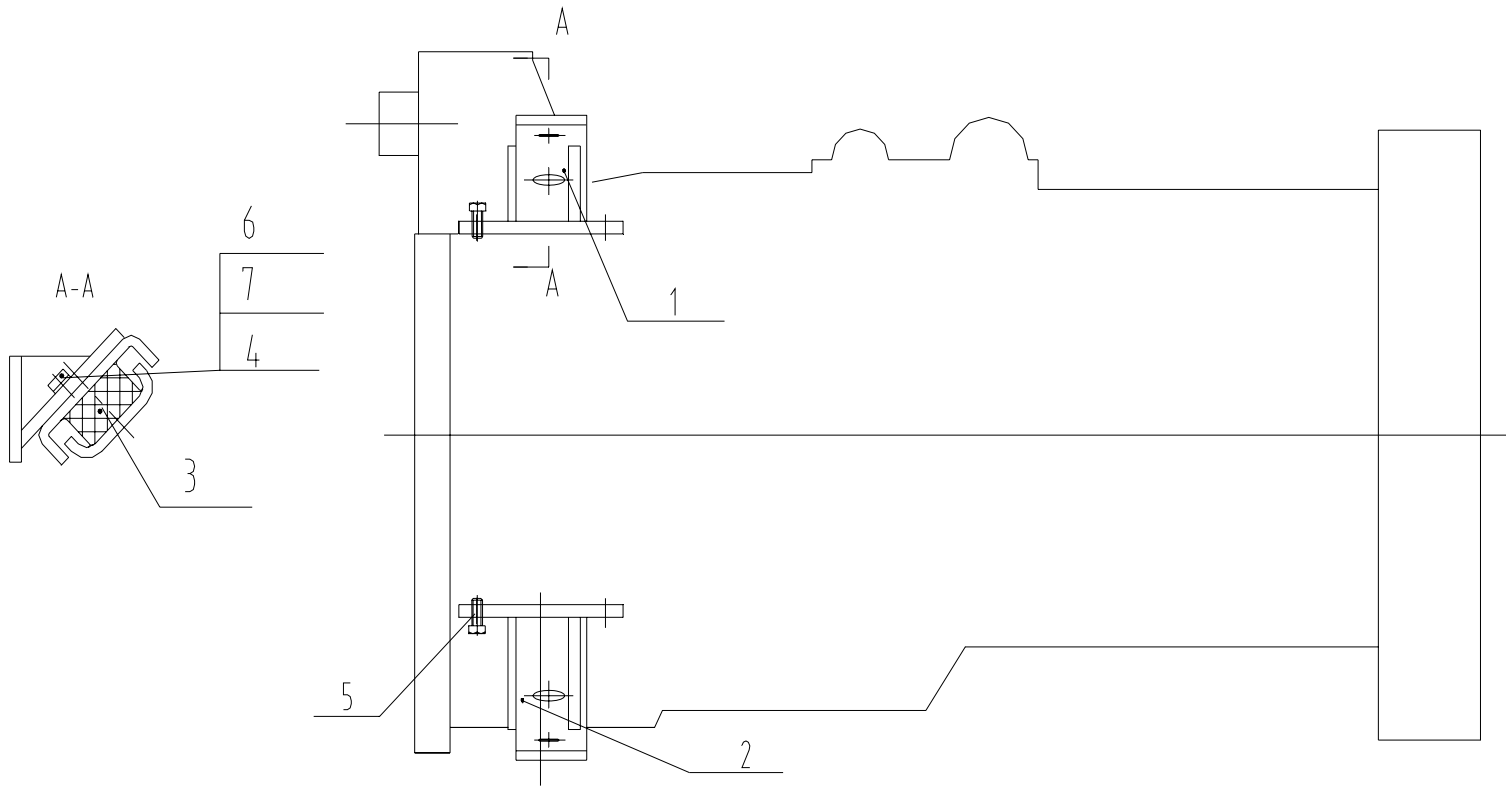


Fig. 28 Engine Support

Fig. 28 Diesel engine supporting assembly No. and applicable model

Ass'y Code	Diesel engine supporting ass'y No.	Applicable model
①	D33-000-187	DBK0812 DBK0813 DBK0811

Fig. 28 Parts and components for Diesel engine supporting assembly

No.	Designation	Order No.	Ass'y Code Qty per set					No.	Designation	Order No.	Ass'y Code Qty per set					
			①	②	③	④	⑤				①	②	③	④	⑤	
1	Welded and machined part for right-front bearing	D33-007-01a	1					5	Hexagon head bolt	Q/SC622-M12×30	8					
2	Welded and machined part for left-front bearing	D33-008-01a	1					6	Washer, plain	GB/T97.1-14-200H V-Y	2					
3	Front suspension cushion	D33-009-01a	1					7	Hexagon Nut, Type I	GB/T6171-M14×1.5-10-Y	2					
4	Standard spring washer	GB/T93-14	2													

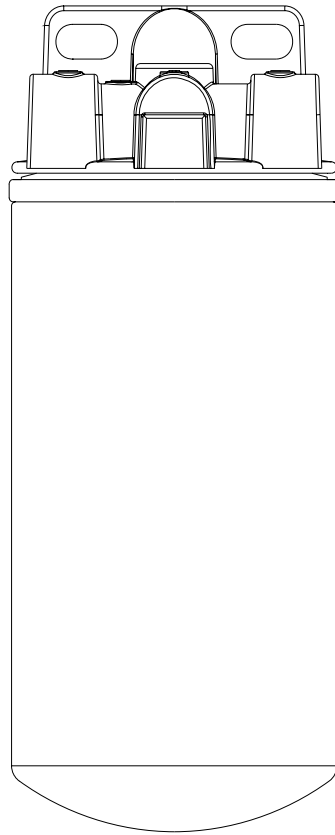


Fig. 29 Fuel Oil Strainer

Fig. 29 Fuel oil strainer assembly No. and applicable model

Ass'y Code	Fuel oil strainer ass'y No.	Applicable model
①	D638-000-802a	DBK0812 DBK0813 DBK0811

Fig. 29 Parts and components for Fuel oil strainer assembly

No.	Designation	Order No.	Ass'y Code Qty per set					No.	Designation	Order No.	Ass'y Code Qty per set				
			①	②	③	④	⑤				①	②	③	④	⑤
1	Fuel oil strainer ass'y	D638-000-802a	1												

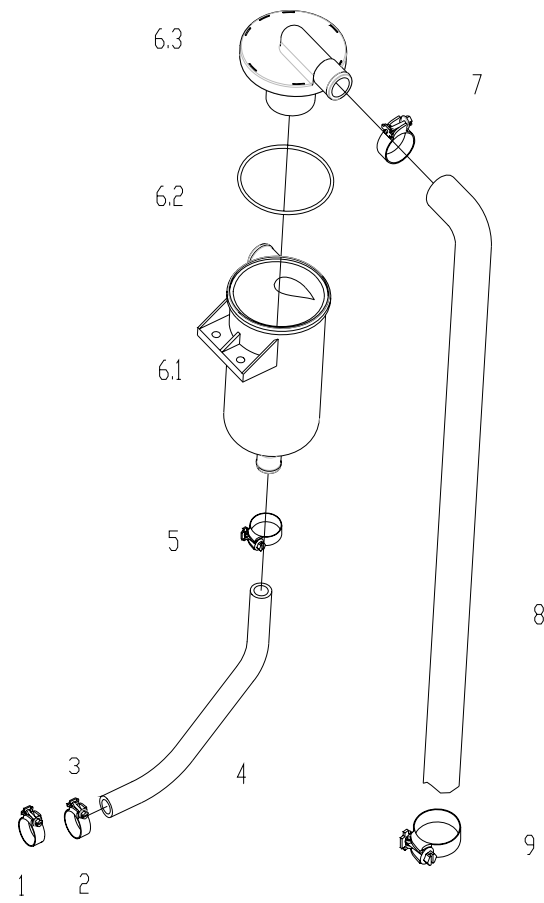


Fig. 30 Oil Mist Precipitator

Fig. 30 Gas-oil separator assembly No. and applicable model

Ass'y Code	Gas-oil separator ass'y No.	Applicable model
①	D42-000-30a	DBK0812 DBK0813 DBK0811

Fig. 30 Parts and components for Gas-oil separator assembly

No.	Designation	Order No.	Ass'y Code Qty per set					No.	Designation	Order No.	Ass'y Code Qty per set				
			①	②	③	④	⑤				①	②	③	④	⑤
1	Throat hoop	Q/SC1302-18~32	1					6.1	Gas-oil separator body	D42-101-30a	1				
2	Clamping collar	D42-104-30a	1					6.2	“O” rubber seal ring	GB3452.1-75×2.65	1				
3	Hex flange-face bolt	Q/SC622-M6×12	1					6.3	Gas-oil separator cover	D42-102-30a	1				
4	Gas-oil separator return oil pipe	D42-103-30a	1					7	Throat hoop	Q/SC1302-21~44	1				
5	Throat hoop	Q/SC1302-21~44	1					8	Gas-oil separator outlet pipe	D42-500-01	1				
6	Gas-oil separator fittings	D42-001-30a	1					9	Clamping collar	D42-107-31	1				

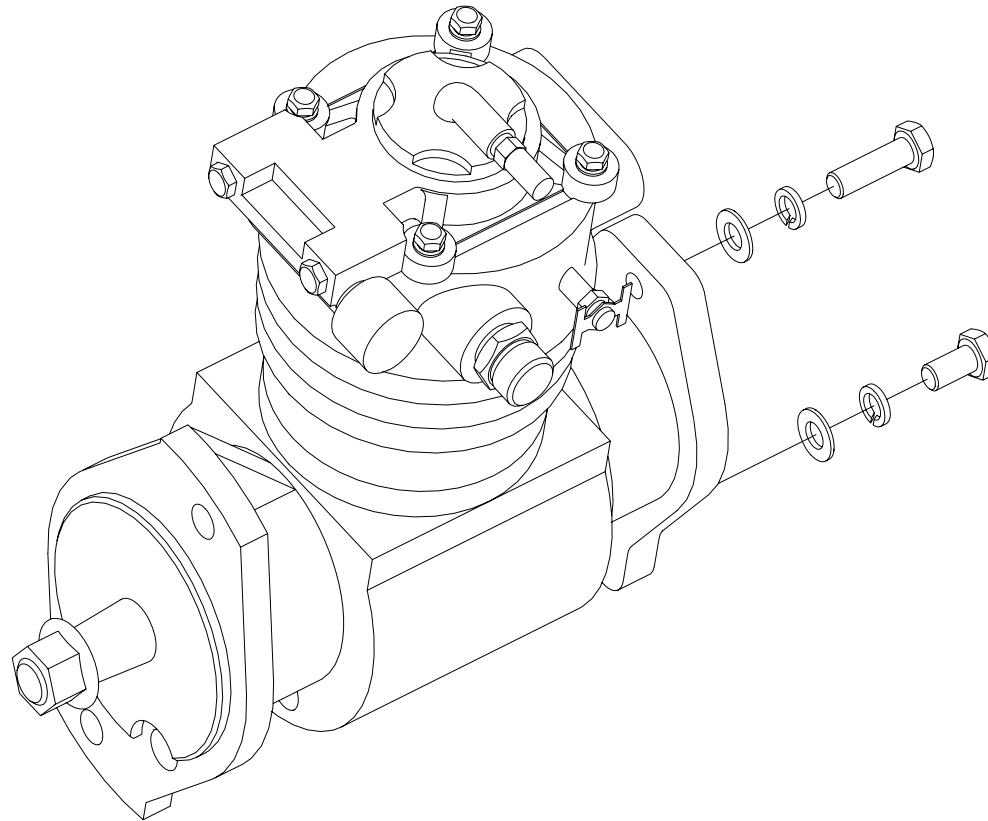


Fig. 31 Air Compressor

Fig.31 Air compressor assembly No. and applicable model

Ass'y Code	Air compressor ass'y No.	Applicable model
①	D47-000-10	DBK0812 DBK0813 DBK0811

Fig.31 Parts and components for Air compressor assembly

No.	Designation	Order No.	Ass'y Code Qty per set					No.	Designation	Order No.	Ass'y Code Qty per set								
			①	②	③	④	⑤				①	②	③	④	⑤				
1	Air compressor	D47-000-10	1																

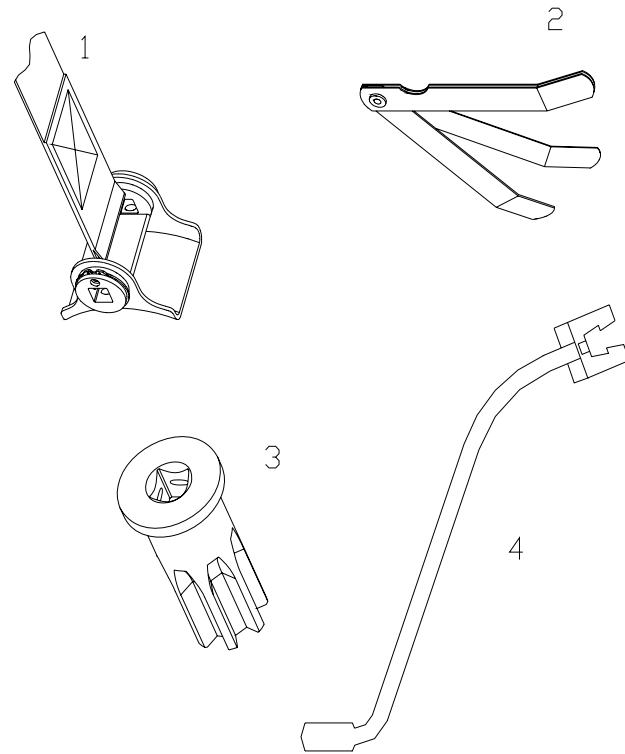


Fig. 32 Repair Kits

Fig. 32 Supplied tool kit No. and applicable model

Ass'y Code	Supplied tool kit No.	Applicable model
①	D49-000-801	DBK0812 DBK0813 DBK0811

Fig. 32 Parts and components for Supplied tool kit

No.	Designation	Order No.	Ass'y Code Qty per set					No.	Designation	Order No.	Ass'y Code Qty per set				
			①	②	③	④	⑤				①	②	③	④	⑤
1	Oil/fuel filter puller	D49-001-01a	1					3	Turning gear tool	D49-101-01	1				
2	Valve clearance gauge	D49-003-30a	1					4	Special wrench for oil injector dismount/assembly	D49-103-800a	1				

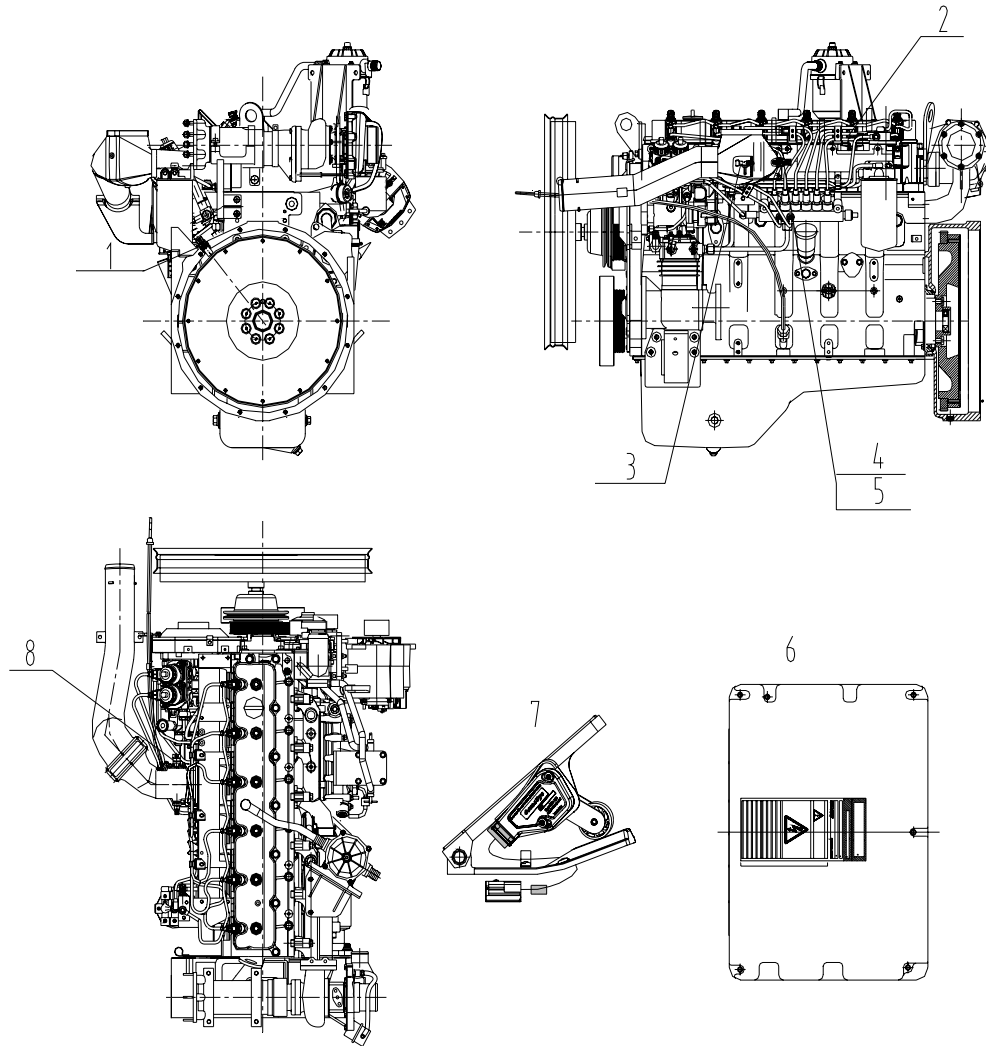


Fig.33 Diesel Engine spare part

Fig. 33 Control unit assembly No. and applicable model

Ass'y code	Ass'y No for Diesel Engine spare part	Applicable model
①	D88A-000-805	DBK0812 DBK0813 DBK0811

Fig. 33 Parts and components for Control unit assembly

No.	Designation	Order No.	Ass'y Code Qty per set					No.	Designation	Order No.	Ass'y Code Qty per set				
			①	②	③	④	⑤				①	②	③	④	⑤
1	Speed sensor	D88A-001-800	1					5	Fuel temp. sensor	D88A-002-800	1				
2	Intake pressure sensor	D88A-004-800	1					6	Rubber seal ring	Q/SC648-9.7×1.9	1				
3	Intake temp. sensor	D88A-003-800	1					7	Copper washer	Q/SC598-12×18	1				
4	Copper washer	Q/SC598-16×22	2					8	Water temp. sensor	D88A-005-800	1				

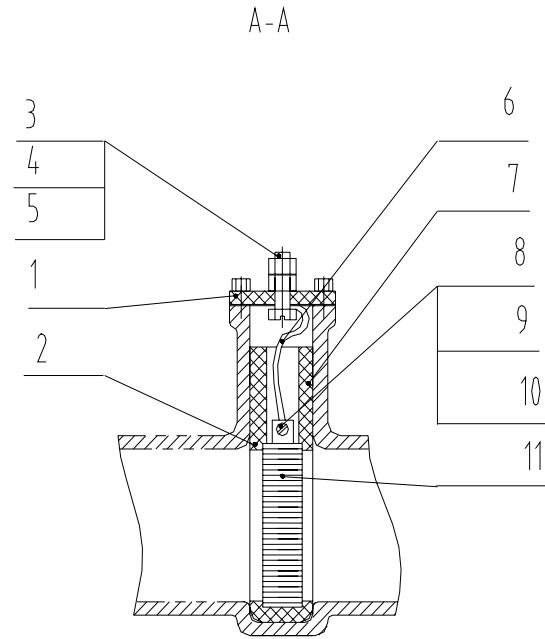
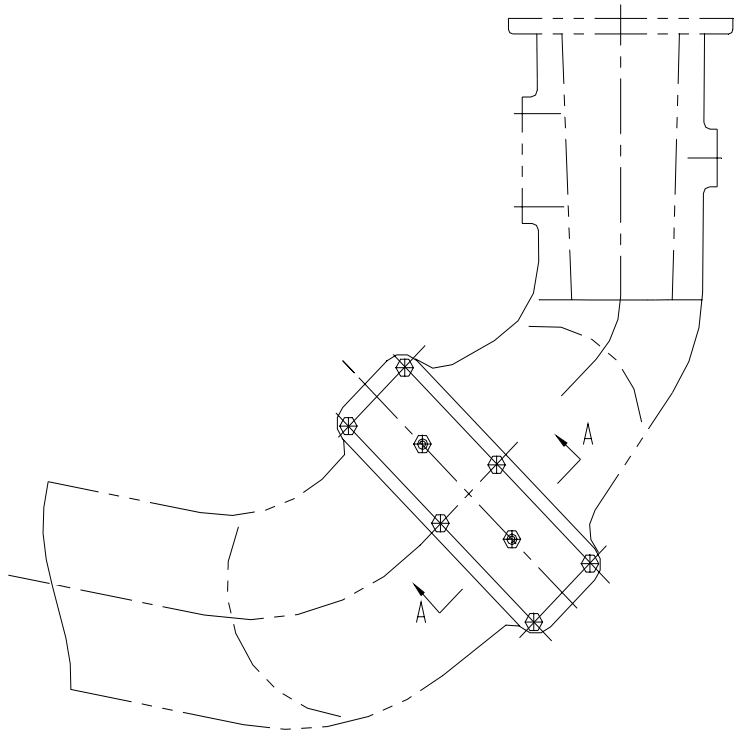


Fig. 34 Cold starting system

Fig. 34 Cold starting system assembly No. and applicable model

Ass'y Code	Cold starting system ass'y No.	Applicable model
①	LQT-000AZ	DBK0812 DBK0813 DBK0811

Fig. 34 Parts and components for Cold starting system assembly

No.	Designation	Order No.	Ass'y Code Qty per set					No.	Designation	Order No.	Ass'y Code Qty per set				
			①	②	③	④	⑤				①	②	③	④	⑤
1	Intake pipe cover	LQT-001	1					7	Insulator lower piece	LQT-003	1				
2	Insulator upper piece	LQT-002	1					8	Notched disc-head screw	GB/T67-M3×5	5				
3	Notched disc-head screw	GB/T67-M8×30	2					9	I-shape hexagon nut	GB/T6170-M3	5				
4	I-shape hexagon nut	GB/T6170-M8	4					10	Flat washer	GB/T97.1-3-140HV	5				
5	Flat washer	GB/T97.1-8-140HV	4					11	PTC heater	LQT-010	1				
6	Heater harness	LQT-020	1												

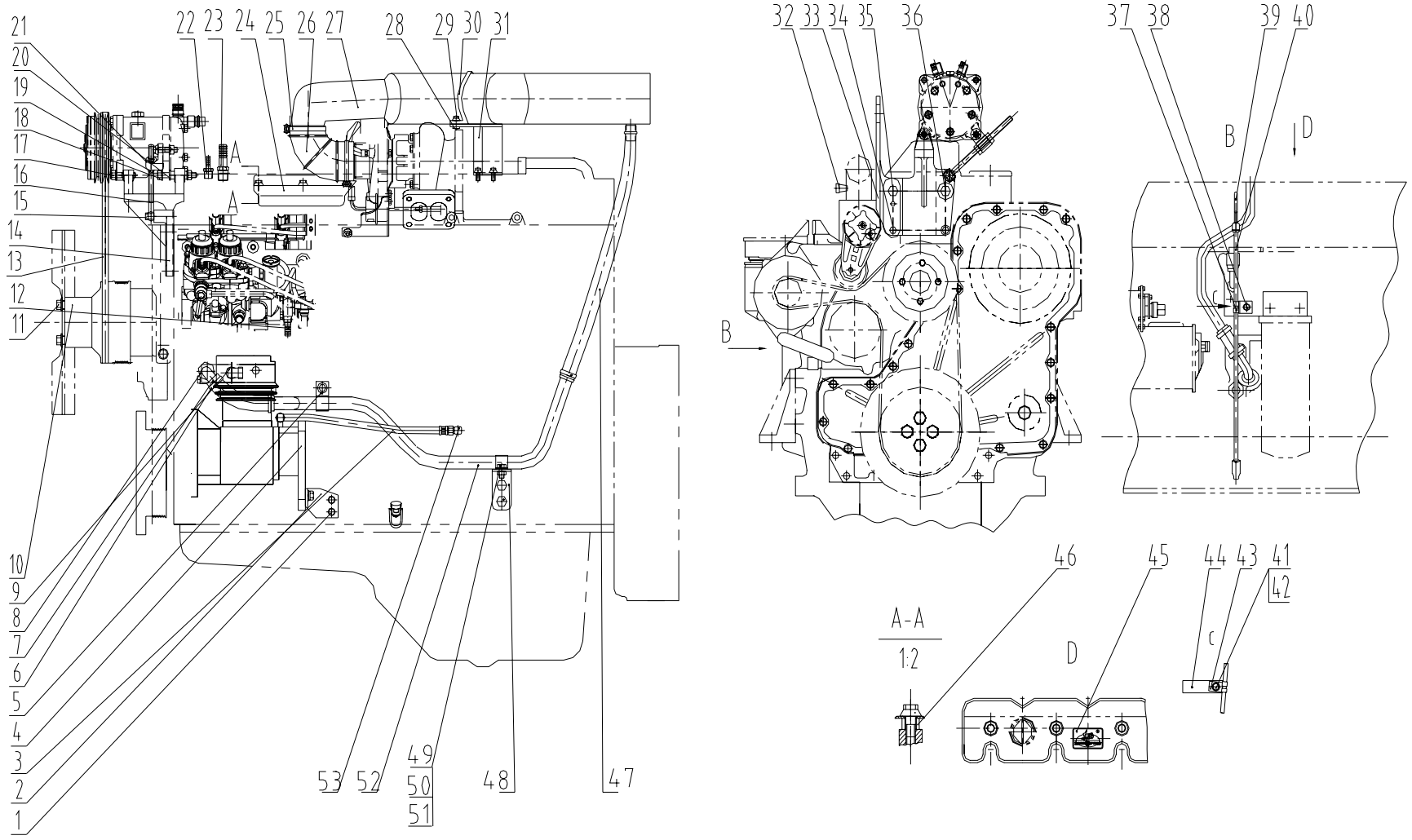


Fig. 35 Engine Application I

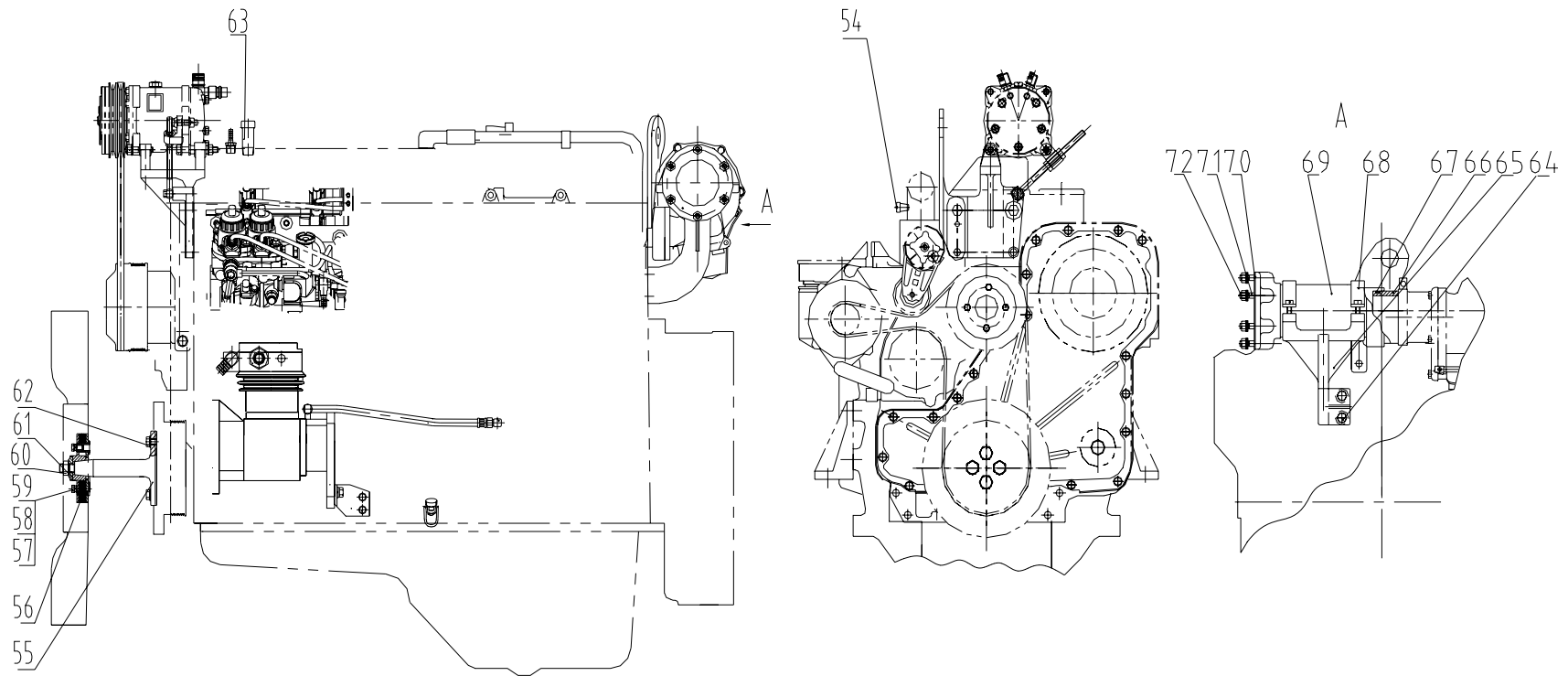


fig. 35 Engine Application II

Fig. 35 Engine application assembly No. and applicable model

Ass'y Code	Engine application ass'y No.	Applicable model
①	D00-000-805	DBK0812
②	D00-000-807	DBK0813
③	D00-000-801	DBK0811

Fig. 35 Parts and componets for Engine application assembly

No.	Designation	Order No.	Ass'y Code										No.	Designation	Order No.	Ass'y Code										
			Qty per set													Qty per set										
			①	②	③	④	⑤	⑥	⑦	⑧	⑨	⑩				①	②	③	④	⑤	⑥	⑦	⑧	⑨	⑩	
1	Nut, Hex Flange Head Cap	Q/SC622-M10×20	7	3	2								12	Connector Welding	D26-007-01	1	1	1								
2	Bracket, Air Compressor	D00-101-02	1	1	1								13	V-belt	GB12732-AV13 ×1125	1	1	1								
3	Oil Inlet, Air Compressor	D00-106-02a	1	1	1								14	Bracket	D00-149-03	1	1	1								
4	Cover, Air Compressor	D00-142-01	1	1	1								15	Hexagon Head Bolt	GB/T5783-M10 ×40	1	1	1								
5	Clip	D00-190-02	1	1									16	Bolt	D00-242-07	1	1	1								
6	Clamp	Q/SC1302-21 ~ 38	4	4									17	Nut, Hex Flange Head Cap	Q/SC622-M10× 40	2	2	2								
7	Hose	D00-206-09	1	1									18	Nut, Hex Flange Head Cap	Q/SC622-M10× 70	1	1	1								
8	Elbow Adapter, Pipe	D00-105-05	1	1									19	Nut, Hex Flange Head Cap	GB/T6177-M10 -Y	4	4	4								
		D00-105-08			1								20	Space Sleeve	D11-104-01	1	1	1								
9	Tie-in	D00-160-01	1	1									21	Sheath	D00-176-01	1	1	1								
		D00-160-08			1								22	Connector, Vent	D00-290-01	1	1	1								
10	Space, Fan	D16A-128-37	1	1									23	Adapter	D00-163-04	1	1									
11	Nut, Hex Flange Head Cap	Q/SC622-M12×120	4	4											D00-163-09			1								

Fig. 35 Parts and componets for Engine application assembly

No.	Designation	Order No.	Ass'y Code										No.	Designation	Order No.	Ass'y Code										
			Qty per set													Qty per set										
			①	②	③	④	⑤	⑥	⑦	⑧	⑨	⑩				①	②	③	④	⑤	⑥	⑦	⑧	⑨	⑩	
24	Board, Heat Insulation	D00-154-04a	1										35	Nut, Hex Flange Head Cap	Q/SC622-M12×45	1	1	1								
25	Spring Retainer	Q/SC1092-85	2	2									36	Nut, Hex Flange Head Cap	Q/SC622-M12×35	1	1	1								
26	Elbow Hose	D00-206-06	1										37	Cushion, Clip	D00-139-01	2	2	2								
		D00-206-14		1									38	Hexagon Head Bolt	GB/T5783-M8×55	1	1	1								
27	Compressor Air inlet Tube	D12B-002-42	1										39	Dip stick Assembly	D00-006-22	1	1	1								
		D12B-002-38		1									40	Adapter Pipe Welding, Dip Stick	D00-008-19	1	1	1								
28	Hexagon Nut, Type I	GB/6170-M8	1	1									41	Nut, Hex Flange Head Cap	GB/T6177-M8-Y	1	1	1								
29	Nut, Hex Flange Head Cap	Q/SC622-M8×25	6	6	1								42	Nut, Hex Flange Head Cap	Q/SC622-M8×16	1	3	1								
30	Clip	D12B-107-03	1	1									43	Clip	D00-138-01	1	1	1								
31	Bracket Welding	D00-031-02	1	1									44	Bracket	D00-143-21	1	1	1								
32	Adapter	D31-112-03	1	1	1								45	Trademark Plate	D04-164-01	1	1	1								
33	Eye Plate, Front	D00-236-04	1	1	1								46	Hexagon Nut, Type I	GB/T6170-M12-Y	2										
34	Nut, Hex Flange Head Cap	Q/SC622-M8×35	1	1	1								47	Hose	Q/SC646-25×550	1	1									

Fig. 35 Parts and componets for Engine application assembly

No.	Designation	Order No.	Ass'y Code										No.	Designation	Order No.	Ass'y Code										
			Qty per set													Qty per set										
			①	②	③	④	⑤	⑥	⑦	⑧	⑨	⑩				①	②	③	④	⑤	⑥	⑦	⑧	⑨	⑩	
48	Brace, Clip	D00-201-02a	1	1																						
49	Clip	D00-190-03	1	1																						
50	Nut, Hex Flange Head Cap	Q/SC622-M6×20	1	1																						
51	Nut, Hex Flange Head Cap	GB/T6177-M6-Y	1	1																						
52	Intake Pipe, Air Compressor	D00-188-03	1	1																						
53	Elbow Adapter, Pipe	D02A-167-01	1	1	1																					
54	Plug Fan	D04-309-01		1	1																					
55	Transmission Shaft	D00-109-05			1																					
56	Connector Assembly, Fan	D00-002-01a			1																					
57	Standard Spring Washer	GB/T93-10			4																					
58	Hexagon Head Bolt	GB/T5786-M10×1×25			4																					
59	Washer, Plain	GB/T97.1-10-200HV-Y			10																					
60	Screw Fan Cap,	D00-147-01																1								
61	Nut, Hex Flange Head Cap	Q/SC622-M10×30																8								
62	Clamp, Pulley	D00-110-01																1								
63	Rear Eye Plate	D00-163-09																1								
64	Nut, Hex Flange Head Cap	Q/SC622-M10×45																2								
65	Bracket	D00-143-800																1								
66	Elbow Exhaust Pipe,	D00-119-01																1								
67	Seal ring	D00-121-01																2								
68	Clip	D00-185-01																2								
69	Elbow Exhaust Pipe,	D00-119-05																1								
70	Gasket	D00-173-03																1								

Fig. 35 Parts and componets for Engine application assembly

No.	Designation	Order No.	Ass'y Code										No.	Designation	Order No.	Ass'y Code									
			Qty per set													Qty per set									
			①	②	③	④	⑤	⑥	⑦	⑧	⑨	⑩				①	②	③	④	⑤	⑥	⑦	⑧	⑨	⑩
71	Stud	D13-103-01			6								72	Nut	D13-304-01			6							